



SearMagic

High-performance cooking grids that heat up faster and provide uniform temperature

Why MHP Grills? In a word...**Quality**

DESIGN & CONSTRUCTION

- Proudly made in the USA
- MHP Grills average a life span of 20+ years (Industry average is 4 years)
- Constructed of commercial grade 304 stainless steel & cast aluminum for lasting durability
- Our cast aluminum and commercial grade 304 stainless steel design withstand the elements better than any other material

GRILLING EXPERIENCE

- Porcelain briquettes provide consistent even heat distribution and minimize flare-ups
- Cast Aluminum housings provide ultimate heat retention
- Choose grill features and add optional upgrades to customize for specific needs

LIFETIME SERVICE

- Backed by one of the most comprehensive lifetime warranties in the industry
- Quality materials and construction means easier to maintain and less to replace
- Perform maintenance easily on an MHP Grill for a lifetime of service
- Friendly and knowledgeable customer service specialists readily available for the lifetime of the grill

PRODUCT HIGHLIGHTS

- ▶ These grills have picked up where the original Charmglow left off
- ▶ Our H-style burner design provides superior heat distribution compared to the competition
- ▶ Competitive pricing that yields better margins
- ▶ Easily increase grilling performance with our SearMagic Cooking System
- ▶ Grills are built to suit with a variety of grill heads, mounts and burner configurations
- ▶ Available in select markets

ASK YOUR RAY MURRAY SALES REP ABOUT OUR AVAILABLE DISPLAY PROGRAMS

JNR Gas Grill

- Black Powder Coated Cast Aluminum Grill Head
- 495 sq. in. Total Cooking Area
- Patented "H" Stainless Steel Dual Burners, 30,000 Btu's
- 1 Stainless Steel Drop Down Shelf
- Electronic Ignition
- Flavor Master™ Porcelain Briquettes

| Model No. | Description | List Price |
|------------|---|------------|
| JNR4DDN | JNR Grill Head Only with Shelf and Stainless Steel Cooking Grids - NG | \$1,100.00 |
| JNR4DDP | JNR Grill Head Only with Shelf and Stainless Steel Cooking Grids - LP | \$1,165.00 |
| JNR4DDNS ❖ | JNR Grill Head Only with Shelf and SearMagic Cooking Grids - NG | \$1,100.00 |
| JNR4DDPS ❖ | JNR Grill Head Only with Shelf and SearMagic Cooking Grids - LP | \$1,165.00 |



JNR4



JCP4 (tank not included)



MPP



OCOL

OCOL-B



OC



OM-P/N



OP-P/N



PPO-6-30

| JNR Mounting Options | | |
|----------------------|---|----------|
| JCN4 | Cast Aluminum NG Cart. Includes 12' Hose with Quick Disconnect Coupler and Stainless Steel Grease Cup for Grill Head | \$395.00 |
| JCP4 | Cast Aluminum LP Cart. Includes Tank Ring and Stainless Steel Grease Cup for Grill Head | \$355.00 |
| MPB | Aluminum Post and NuStone Patio/Deck Base Mount with Stainless Steel Tubing. Includes Stainless Steel Grease Cup for Grill Head. For NG or LP Gas Installation. | \$175.00 |
| MPP | 48" Anodized Aluminum In-Ground Post with Stainless Steel Tubing. Includes Stainless Steel Grease Cup for Grill Head. For NG or LP Gas Installation. | \$135.00 |
| OCOL | One Piece Stainless Steel Column. Includes Stainless Steel Access Door and Grease Cup. | \$435.00 |
| OCOL-B | One Piece Black Aluminum Column. Includes Stainless Steel Access Door and Grease Cup. | \$280.00 |
| OC-N ❖ | Portable Column Base with 6" Wheels for NG Grill. Includes 12' Hose with Quick Disconnect Coupler. Mate with OCOL-B or OCOL Column. | \$335.00 |
| OC-P ❖ | Portable Column Base with 6" Wheels for LP Grill. Mate with OCOL or OCOL-B Column. | \$265.00 |
| OM-N | Portable Column Base for NG Grill with 8" Wheels and Locking Casters. Includes 12' Hose with Quick Disconnect Coupler. Mate with OCOL or OCOL-B Column. | \$335.00 |
| OM-P | Portable Column Base for LP Grill with 8" Wheels and Locking Casters. Includes 12' Hose with Quick Disconnect Coupler. Mate with OCOL or OCOL-B Column. | \$265.00 |
| OP-N | Permanent Mounting Base for NG Grill. Includes 28" Stainless Steel Gas Feed Line. Mate with OCOL or OCOL-B Column. | \$225.00 |
| OP-P ❖ | Permanent Mounting Base for LP Grill. Includes 28" Stainless Steel Gas Feed Line. Mate with OCOL or OCOL-B Column. | \$205.00 |

Pricing, model numbers and availability are subject to change without notice.

❖ - Non-Stock, Special Order - NO RETURNS or CANCELLATIONS



WNK Gas Grill

- Black Powder Coated Cast Aluminum Grill Head
- 642 sq. in. Total Cooking Area
- Patented "H" Stainless Steel Dual Burners, 30,000 Btu's
- 2 Stainless Steel Drop Down Shelves
- Electronic Ignition
- Flavor Master™ Porcelain Briquettes

| Model No. | Description | List Price |
|------------|---|------------|
| WNK4DDN | WNK Grill Head Only with 2-Stainless Steel Drop Down Shelves and Stainless Steel Cooking Grid - NG | \$1,375.00 |
| WNK4DDP | WNK Grill Head Only with 2-Stainless Steel Drop Down Shelves and Stainless Steel Cooking Grids - LP | \$1,445.00 |
| WNK4DDNS | WNK Grill Head Only with 2-Stainless Steel Drop Down Shelves and SearMagic Cooking Grids - NG | \$1,375.00 |
| WNK4DDPS ❖ | WNK Grill Head Only with 2-Stainless Steel Drop Down Shelves and SearMagic Cooking Grids - LP | \$1,445.00 |



WNK4



WCN4

WNK Mounting Options

| | | |
|--------|---|----------|
| WCN4 | Cast Aluminum NG Cart. Includes 12' Hose with Quick Disconnect Coupler and Stainless Steel Grease Cup for Grill Head | \$395.00 |
| WCP4 | Cast Aluminum LP Cart. Includes 12' Hose with Quick Disconnect Coupler and Stainless Steel Grease Cup for Grill Head | \$355.00 |
| MPB | Aluminum Post and NuStone Patio/Deck Base Mount with Stainless Steel Tubing. Includes Stainless Steel Grease Cup for Grill Head. For NG or LP Gas Installation. | \$175.00 |
| MPP | 48" Anodized Aluminum In-Ground Post with Stainless Steel Tubing. Includes Stainless Steel Grease Cup for Grill Head. For NG or LP Gas Installation. | \$135.00 |
| OCOL | One Piece Stainless Steel Column. Includes Stainless Steel Access Door and Grease Cup. | \$435.00 |
| OCOL-B | One Piece Black Aluminum Column. Includes Stainless Steel Access Door and Grease Cup. | \$280.00 |
| OC-N ❖ | Portable Column Base with 6" Wheels for NG Grill. Includes 12' Hose with Quick Disconnect Coupler. Mate with OCOL-B or OCOL Column. | \$335.00 |
| OC-P ❖ | Portable Column Base with 6" Wheels for LP Grill. Mate with OCOL or OCOL-B Column. | \$265.00 |
| OM-N | Portable Column Base for NG Grill with 8" Wheels and Locking Casters. Includes 12' Hose with Quick Disconnect Coupler. Mate with OCOL or OCOL-B Column. | \$335.00 |
| OM-P | Portable Column Base for LP Grill with 8" Wheels and Locking Casters. Includes 12' Hose with Quick Disconnect Coupler. Mate with OCOL or OCOL-B Column. | \$265.00 |
| OP-N | Permanent Mounting Base for NG Grill. Includes 28" Stainless Steel Gas Feed Line. Mate with OCOL or OCOL-B Column. | \$225.00 |
| OP-P ❖ | Permanent Mounting Base for LP Grill. Includes 28" Stainless Steel Gas Feed Line. Mate with OCOL or OCOL-B Column. | \$205.00 |



MPB

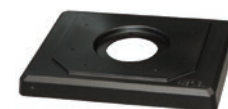


OCOL

OCOL-B



OM-P/N



OP-P/N

Pricing, model numbers and availability are subject to change without notice.

Common Grill Accessories and Parts

Model No. Description List Price

Cart Model Side Burners

| | | |
|----------|---|----------|
| SBA3-N ❖ | Cart Model Side Burner, 12,000 Btu's - NG | \$295.00 |
| SBA3-P ❖ | Cart Model Side Burner, 12,000 Btu's - LP | \$295.00 |



SBA3

Grill Covers

| | | |
|-----------|---|---------|
| HHCVPREM | Polyester Lined Cover, Mid-Length Design, Fits MHP JNR Grills, 40" x 20" x 24" | \$33.60 |
| GGCVPREM | Polyester Lined Cover, Mid-Length Design, Fits MHP WNK & TJK Grills, 60" x 20" x 24" | \$43.10 |
| CV2PREM ❖ | Polyester Lined Cover, Mid-Length Design, Fits Mid-Sized Grills, 48" x 20" x 35" | \$53.90 |
| DDCVPREM | Polyester Lined Cover, Mid-Length Design, Fits Grills with Fold-Down Shelves, 36" x 20" x 40" | \$48.00 |
| CV4PREM | Polyester Lined Cover, Full Length Design, Fits WNK, 60"x20"x42" | \$65.90 |



HHCVPREM

Stainless Steel Griddle

| | | |
|---------|--|----------|
| GGGRIDL | SS Griddle Tailored Specifically for WNK/TJK Grills, 11 15/16" x 16 3/4" | \$279.00 |
|---------|--|----------|



GGGRATESS

Rear Rotisserie Burners & Rotisserie

| | | |
|------------|--|----------|
| GGRRB3-N ❖ | Cart Model (WNK4) Infrared Rear Rotisserie Burner - NG | \$295.00 |
| GGRRB3-P ❖ | Cart Model (WNK4) Infrared Rear Rotisserie Burner - LP | \$295.00 |
| RKMHP ❖ | Rotisserie Kit, Includes R06 Motor, Rod, Handle, Forks and 3' Cord. Max 25lb Balanced Load (all models except GJK) | \$104.00 |



GGRRB3

Common Replacement Parts

| | | |
|-----------|--|----------|
| GGBQ3 | Porcelain Briquettes, 1" x 1" x 1" | \$66.00 |
| GGDLB | Large Dual SS H-Burner, 20" x 8 1/4" | \$74.05 |
| GGDLB13 | Large Dual SS H-Burner with Venturi Tube Assembly, 20"x8 1/4" | \$102.15 |
| HHDSB | Dual SS Burner, 16" x 8" | \$60.15 |
| HHDSB13 | SS H Burner with Venturi, 16" x 8" | \$85.85 |
| GGDV13 | Bolt On Double Venturi, 7 3/8" x 2" | \$25.50 |
| GGEIB | Electronic Ignitor Module | \$34.20 |
| GGER1W | 12" Ignitor Connecting Wire for Battery-Operated Electronic Ignitors | \$6.50 |
| GGGRATESS | SS Briquette Grate, 22" x 14" | \$115.00 |
| HHGRATESS | SS Briquette Grate, 18" x 13 1/2" | \$96.60 |
| GGIB | Collector Box Assembly | \$14.10 |
| GGK10 | 2 Black Knobs | \$3.60 |
| GGRIC | Rotary Ignitor Kit | \$37.55 |
| GGSSGRID | SS Cooking Grid, 12" x 15 3/4" | \$139.00 |
| GGTG4 | Round Temperature Gauge | \$22.55 |



GGBQ3



HHDSB



GGGRATESS

Note: MHP Offers Built-In Grill Components for WNK, TSK Hybrid, Tri-Burn and Infrared Grill Heads

Pricing, model numbers and availability are subject to change without notice.

❖ - Non-Stock, Special Order - NO RETURNS or CANCELLATIONS



Premium Outdoor Rated Refrigerator

is the perfect addition to any outdoor entertainment area with plenty of party-pleasing features.

Built to withstand the elements, our outdoor fridge is constructed of commercial grade 304 stainless steel from top to bottom, inside and out. The large 24-inch 5 Cu. Ft. capacity with fan forced cooling, makes it ideal for keeping food and beverages at a consistent temperature while the glass door and energy efficient LED lighting fully displays stored items.

ETL Rated for Indoor & Outdoor Use

FEATURES

- 5.0 Cu. Ft. Holds up to 156 cans.
- Zero-clearance reversible glass door
- Three adjustable wire shelves
- Charcoal filtration system. Comes with a replaceable filter.
- 304 stainless steel construction
- Interior LED lights
- Security lock/audio alarm
- Auto defrost
- Digital thermostat. Set temps from 32°F to 68°F

| Model No. | Description | List Price |
|-----------|------------------------------------|------------|
| PFFRIG24 | Premium Outdoor-Rated Refrigerator | \$2,475.00 |

