

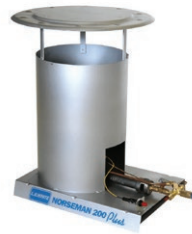
### LB White Construction Heaters



### L B WHITE CONVECTION PORTABLE HEATERS

Convection Heaters can warm up spaces fast. No Electricity on the job site yet? No Problem, Our Convection Heater don't need it. As the heater warms, the surrounding air will increase in temperature, expand, and rise to the top of the space. This forces down the cooler air so it can be heated creating a convection heat pattern.

- **MADE in U.S.A**
- 99.9% Direct-Fired Fuel Efficiency
- 360-degree heat Distribution
- No Electricity required
- Heavy Gauge Steel Body, One-Piece Barrel
- Hose & Regulator included w/ LP Models (Canada)



NORSEMAN 200 PLUS



WORKMAN 225 PLUS

Model #	Gas Type	Operation	Btu's	Description	Width	Depth	Height
WORKMAN 100N PLUS	NAT	Piezo Ignition	100,000	Convection Stainless Steel Burner, Standard Duty	15"	16.5"	25"
NORSEMAN 200 PLUS	LP	Piezo Ignition	200,000	Convection Cast Iron Burner, Heavy Duty	13"	18"	24"
WORKMAN 225 PLUS	LP	Piezo Ignition	45,000 - 225,000	Convection Stainless Steel Burner, Standard Duty	15"	17"	25"
NORSEMAN 250	LP	Piezo Ignition	250,000	Convection Cast Iron Burner, Heavy Duty	13"	18"	24"

### L B WHITE SUN BLAST RADIANT PORTABLE HEATERS

Like the sun, this radiant heat warms objects not the air. No Electricity on the job site yet? No Problem, Our Radiant Heater don't need it.

- **MADE in U.S.A.**
- 99.9% Direct-Fired Fuel Efficiency
- No Electricity required
- Flat Panel Style, Directional heat from Sun Blast 35
- 360-degree heat Distribution (Sun Blast 100 and 125)
- Option to hang during operation (Sun Blast 100 and 125)
- Tip Over Switch for safe shut-down (Sun Blast 100 and 125)
- Heavy 16-Gauge Galvanized Steel (Sun Blast 100 and 125)
- 7-setting thermostatic controller w/ recessed controls to prevent damage (Sun Blast 100 and 125)



SUNBLAST 35



SUNBLAST 125



SUNBLAST HD 100

Model #	Gas Type	Operation	Btu's	Description	Width	Depth	Height
SUN BLAST 35	LP	Piezo Ignition	35,000	Direct-Fired Radiant Portable Heater	10.4"	12.4"	37.5"
SUN BLAST HD 100	LP	Piezo Pilot Ignition	50,000 - 100,000	Direct-Fired Radiant Portable Heater	16.0"	16.0"	32.5"
SUN BLAST HD 100N	NAT	Piezo Pilot Ignition	50,000 - 100,000	Direct-Fired Radiant Portable Heater	16.0"	16.0"	32.5"
SUN BLAST 125	LP	Piezo Pilot Ignition	125,000	Direct-Fired Radiant Portable Heater	16.2"	16.5"	35.0"
SUN BLAST 125N	NAT	Piezo Pilot Ignition	125,000	Direct-Fired Radiant Portable Heater	16.2"	16.5"	35.0"



Non-stock/special order items are not cancellable or returnable

Shop online at [www.raymurray.com](http://www.raymurray.com) or call **800-628-5044**

### LB White Construction Heaters



### L B WHITE FOREMAN DUCTABLE INDIRECT-FIRED PORTABLE HEATER

The Foreman is a vented portable heater ideal for providing dry, clean heat into insulated spaces, work areas, heating docks or anywhere 100% clean air is needed. L.B. White's Ductable Foreman heater features a fuel-saving high efficiency welded heat exchanger, powder-coated frame, quiet operation, and high CFM.

- **MADE in U.S.A.**
- Operates from LP to Natural Gas with a turn of a ball valve, Indoor/Outdoor Rated, Duct up to 100 feet to save space in work areas, vent outside or into existing chimney to operate indoors and mitigate heat loss
- Industry-leading quiet operation at 70dB or less, Reduces Sound Pollution and meets OSHA Standards
- Foreman 230 DF can be moved manually or lifting bail
- Foreman 500 DF and 750 DF can be moved manually, fork lift or lighting bail
- Save Storage Space with option Stack (Foreman 500 & 750), Store On-End (Foreman 230)



FOREMAN 230 DF

Model #	Gas Type	Operation	Btu's	Description	Width	Depth	Height
FOREMAN 230 DF	LP/NAT	Electronic Ignition	230,000	Dual Fuel Ductable Indirect-Fired CFM Portable Heater	26.6"	60.2"	43.3"
FOREMAN 500 DF	LP/NAT	Electronic Ignition	500,000	Dual Fuel Ductable Indirect-Fired CFM Portable Heater	32.0"	94.0"	53.0"
FOREMAN 750 DF	LP/NAT	Electronic Ignition	750,000	Dual Fuel Ductable Indirect-Fired CFM Portable Heater	32.0"	94.0"	53.0"

#### ACCESSORIES

Model #	Description
132047	Gas Hose, 1" X 15' (Foreman 750)
25141	Regulator, (All Foreman DF)
25965	Gas Hose, 3/4" X 15' (Foreman 230/500)
30052LBW	Duct, 12" X 25' Gray Fire-Retardant w/ Clamp
30053	Duct, 20" X 25' Gray Recirculating w/ Clamp
30076	Duct, 16" X 25' Gray Fire-Retardant w/ Clamp
500-30125	Thermostat, NEMA 4X w/ 25' Cord
30161	Exhaust Pipe Extension, Steel, 6" (Foreman 230S,500S,750 DF)
30162	Rain Cap, (Foreman 230S,500S,750 DF)
30902LBW	Duct Adapter Kit, 16"
500-30903	Heater Stacking Kit (Foreman 500/750)



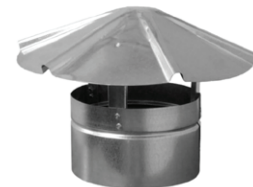
25965



30053



30161



30162



Non-stock/special order items are not cancellable or returnable

Shop online at [www.raymurray.com](http://www.raymurray.com) or call **800-628-5044**

**LB White Construction Heaters**



**L B WHITE TRADESMAN AND BOSS DIRECT-FORCED AIR HEATER**

Engineered to deliver reliable, directional heat, L.B. White Tradesman® Portable Heaters feature a unique 3-trial ignition system, the industry's heaviest gauge combustion chamber and burner plate, and Self Diagnostic Service Saver models for convenient trouble-shooting.

Big Push, Big Heat into a large, wide open job sites with the Boss Heater Series. High CFM and 99.9% fuel efficiency this Direct-Fired Series has countless Construction and Industrial Applications.

- **MADE in U.S.A.** (Excludes Tradesman 125, China)
- Reliable, Directional Heat, Efficient Forced Air
- 99% Direct-fired Fuel Efficiency with variable output controls and thermostatic control
- Boss CFM Models, True Portability w/ Cool-End Handle, Wheels, and fits through a standard 36" door frame
- Boss CFM Models, Saves Storage space with option to stand on end or stack



**BOSS 400 DF**



**TRADESMAN 125**

Model #	Gas Type	Operation	Btu's	Description	Width	Depth	Height
TRADESMAN 125	LP	Electronic Ignition	70,000 - 125,000	Gas Direct-Forced Air Portable Heater w/ Hose, No Thermostat	11.8"	25.6"	16.0"
TRADESMAN 170	LP	Electronic Ignition	125,000 - 170,000	Gas Direct- Forced Air Portable Heater w/ Hose and Thermostat	9.5"	24.0"	16.0"
TRADESMAN 170N	NAT	Electronic Ignition	125,000 - 155,000	Gas Direct-Forced Air Portable Heater w/ Thermostat, No Hose	9.5"	24.0"	16.0"
TRADESMAN 170 ULTRA	LP	Electronic Ignition	125,000 - 170,000	Gas Direct-Forced Air Portable Heater w/ Hose and Thermostat w/ Diagnostic Light	9.5"	24.0"	16.0"
TRADESMAN 170N ULTRA	NAT	Electronic Ignition	125,000 - 170,000	Gas Direct-Forced Air Portable Heater w/ Thermostat, Diagnostic Light, No Hose	9.5"	24.0"	16.0"
TRADESMAN 400	LP	Electronic Ignition	250,000 - 400,000	Gas Direct-Forced Air Portable Heater w/ Hose and Thermostat	12.5"	34.5"	21.5"
TRADESMAN 400 ULTRA	LP	Electronic Ignition	250,000 - 400,000	Gas Direct-Forced Air Portable Heater w/ Hose and Thermostat w/ Diagnostic Light	12.5"	34.5"	21.5"
TRADESMAN 400 ULTRA DF	LP/NAT	Electronic Ignition	175,000 - 400,000	Gas Direct-Forced Air Portable Heater w/ Hose and Thermostat w/ Diagnostic Light	12.5"	34.5"	21.5"

**L B WHITE BOSS HEATERS**

Model #	Gas Type	Operation	Btu's	Description	Width	Depth	Height
BOSS 400 DF	LP/NAT	Spark Ignition	400,000	Dual Fuel High CFM Direct-Fired Portable Heater w/ Built-In Volt Meter and Thermostat	21.3"	50"	22.5"
BOSS 1000 DF	LP/NAT	Spark Ignition	1,000,000	Dual Fuel High CFM Direct-Fired Portable Heater w/ Built-In Volt Meter and Thermostat	30.8"	60.1"	32.3"

**ACCESSORIES**

Model #	Description
500-25141	Regulator, (DF) (Boss 400)
500-25965	Gas Hose, 3/4" X 15' (Boss 400)
500-132235	Regulator LP, (1st Stage) (Boss 1000)
500-132046	Regulator LP, (2nd Stage) (Boss 1000)
500-132136	Regulator NG, (2 PSIG min inlet) (Boss 1000)
500-132047	Gas Hose, 1" X 15' (Boss 1000)



Non-stock/special order items are not cancellable or returnable

Shop online at [www.raymurray.com](http://www.raymurray.com) or call **800-628-5044**

### LB White Construction Heaters



#### L B WHITE VOLT ELECTRIC FORCED AIR PORTABLE HEATER

\* Made in Finland - UL Approved - Need convenient, clean heat? Volt™ Electric Heaters are best for applications where heating is needed, as well as drying and ventilating. These portable forced air electric heaters feature a user-friendly electric design, quiet, combustion-free operation, no fuel spills or odor and are capable of quick, high temperature rises, Overheat protection at 104 Deg F. Industrial-Grade Fan, Stainless Jacket heating coil, Powder coated steel housing, high-quality seal motor.



VOLT HEATERS

Model #	Operation	Btu's	Description	Width	Depth	Height
VOLT 1.5	Electric	5,100	Forced Air, Portable Heater 120v, 60Hz, Single Phase w/ 10' Power Cord, NEMA 5-15P Plug	12"	11"	8"
VOLT 3	Electric	10,200	Forced Air, Portable Heater 240v, 60Hz, Single Phase w/ 10' Power Cord, NEMA 6-15P Plug	10"	11"	15"
VOLT 6	Electric	20,500	Forced Air, Portable Heater 240v, 60Hz, Single Phase w/ 10' Power Cord, NEMA 14-30P Plug	12"	20"	17"
VOLT 9	Electric	30,700	Forced Air, Portable Heater 240v, 60Hz, Single Phase w/ 10' Power Cord, NEMA 14-50P Plug	14"	23"	18"
VOLT 18-1	Electric	45,000 - 65,000	Forced Air, Portable Heater 240v, 60Hz, Single Phase	14"	32"	20"
VOLT 18-3	Electric	45,000 - 65,000	Forced Air, Portable Heater 240v, 60Hz, Three Phase	14"	32"	20"
VOLT 40	Electric	51,200 - 102,400 - 136,500	Forced Air, Portable Heater 480v, 60Hz, Three Phase	20"	46"	25"
VOLT 60	Electric	82,000 - 164,000 - 205,000	Forced Air, Portable Heater 480v, 60Hz, Three Phase	20"	46"	25"

#### L B WHITE PORTABLE EVAPORATIVE COOLER

**MADE in U.S.A.** - These portable evaporative coolers combine the low operating costs your customers want with rental-ready features to protect your investment. Water from an onboard tank is pumped to the top of a filter-like cooling pad. Then, a 3100 CFM fan pulls warm, environmental air over the filter and pushes out air with a cooling effect 30+ feet. Automatic pump shut-offs prevents pump burnout when water runs out, 10-gal water tank provides 3-4 hours of runtime with easy to read water level display, convenient garden hose connection for continuous fill, operates from standard circuits with low amp draw and safe GFCI connection. Quiet operation at less than 60 dB, adjustable louvers to control airflow, option to set run time.



PC-31

Model #	Coverage Area	Airflow Delivery	Description	Width	Depth	Height
PC-31	950 sq. ft.	3100 CFM	Portable Evaporative Cooler w/ Automatic Pump Shut-Off	24"	16"	38"



Non-stock/special order items are not cancellable or returnable

Shop online at [www.raymurray.com](http://www.raymurray.com) or call **800-628-5044**