

**Enerco Construction Heaters**



**ENERCO CONSTRUCTION PORTABLE HEATERS**

Designed for the worker, HeatStar portable heaters keeps your team comfortable at the job-site, allowing to work longer and more effectively in unseasonable weather to maintain your project deadlines.

Convection Heaters

- Made in China
- Piezo Push Button Igniter
- Thermocouple Operated Gas Valve
- No Electricity Required
- Telescoping Chamber
- Clean Burning, Quiet, Odorless
- Insta-lock Chamber Assembly
- Standing Pilot for Insured Safety
- 20' - 3/8" I.D. Hose w/ Regulator and POL (HS80CV)
- 20' - 1/4" I.D. Hose w/ Regulator and POL (HS200CV)
- POL / Excess Flow Check Valve



HS80CV

| Model #   | Gas Type | Operation      | Btu's            | Description  | Width  | Depth  | Height |
|-----------|----------|----------------|------------------|--|--------|--------|--------|
| HS80CV    | LP       | Standing Pilot | 30,000 - 80,000  | Convection Industrial Construction Portable Heater w/ 20' Hose & Regulator | 18.25" | 17.75" | 16"    |
| HS100CVNG | NG       | Standing Pilot | 50,000 - 100,000 | Convection Industrial Construction Portable Heater                         | 18"    | 18"    | 19"    |
| HS200CV   | LP       | Standing Pilot | 75,000 - 200,000 | Convection Industrial Construction Portable Heater w/ 20' Hose & Regulator | 18"    | 18"    | 19"    |

**ENERCO DIRECT-FIRED FORCED AIR PORTABLE HEATERS**

- Made in China (excluded HS125FAV made U.S.A)
- Flame Safety Control
- Electricity Necessary
- Adjustable Height Control (HS85FAV,HS125FAV,HS170FAVT)
- Built-In Thermostat (HS170FAVT, HS400FAVT)
- 20' - 1/4" I.D. Hose w/ Regulator and POL (HS35FA, HS400FAVT)
- 20' - 3/8" I.D. Hose w/ Regulator and POL (HS85FAV,HS125FAV,HS170FAVT)
- POL Excess Flow Check Valve



HS35FA

| Model #   | Gas Type | Operation           | Btu's             | Description   | Width   | Depth   | Height  |
|-----------|----------|---------------------|-------------------|---|---------|---------|---------|
| HS35FA    | LP       | Piezo Ignition      | 35,000            | Forced Air Construction Heater w/ 20' Hose & Regulator                        | 20-3/4" | 9-3/4"  | 12-3/4" |
| HS85FAV   | LP       | Continuous Ignition | 50,000 - 85,000   | Forced Air Construction Heater w/ 20' Hose & Regulator                        | 18-1/4" | 11-1/2" | 14"     |
| HS125FAV  | LP       | Continuous Ignition | 75,000 - 125,000  | Forced Air Construction Heater w/ 20' Hose & Regulator                        | 21-1/4" | 11-3/4" | 15-3/4" |
| HS170FAVT | LP       | Thermostatic        | 125,000 - 170,000 | Forced Air Construction Heater w/20' Hose & Regulator and Built-In Thermostat | 26-1/2" | 11-1/2" | 16-1/2" |
| HS170NG   | NG       | Thermostatic        | 150,000           | Forced Air Construction Heater w/20' Hose & Regulator and Built-In Thermostat | 26-1/2" | 11-3/4" | 16-1/4" |
| HS400FAVT | LP       | Thermostatic        | 250,000 - 400,000 | Forced Air Construction Heater w/20' Hose & Regulator and Built-In Thermostat | 38-1/2" | 14-3/4" | 22-1/4" |



Non-stock/special order items are not cancellable or returnable

Shop online at [www.raymurray.com](http://www.raymurray.com) or call **800-628-5044**

### Enerco Construction Heaters



#### ENERCO RADIANT PORTABLE HEATERS

- Made in China
- Piezo Push Button Ignition
- Thermocouple Operated Gas Valve
- No Electricity Required
- Clean Burning, Quiet, Odorless
- Tip-Over Switch, Safety Shut-Off
- POL Connection w/ 20' Hose Included (HS35LP,HS125LP)



HS35LP



HS125LP

| Model # | Gas Type | Operation      | Btu's   | Description  | Width  | Depth  | Height |
|---------|----------|----------------|---------|--|--------|--------|--------|
| HS35LP  | LP       | Piezo Ignition | 35,000  | Radiant Portable Construction Heater w/ 20' Hose and Regulator | 10.24" | 12.4"  | 34.25" |
| HS125LP | LP       | Piezo Ignition | 125,000 | Radiant Portable Construction Heater w/ 20' Hose and Regulator | 16.14" | 16.14" | 35.04" |
| HS125NG | NG       | Piezo Ignition | 125,000 | Radiant Portable Construction Heater w/ Regulator Only         | 16.14" | 16.14" | 35.04" |

#### ENERCO NOMAD TENT AND CONSTRUCTION HEATERS

- **Made in U.S.A.**
- Spark Ignition, Thermostat w/ 20' Cord, 15' Hose and Regulator
- Quiet Operation
- Multi-Rate Heat Setting
- Easy Reset High Limit Switch, Choose Rate and Fuel w/ Flip of a Switch
- Flexible Diffuser Connector System



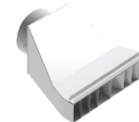
HS115



HS250

#### ENERCO NOMAD VENTING & ACCESSORIES

| Model #  | Model Series                    | Description              |
|----------|---------------------------------|--------------------------|
| FI09105  | HS115SF, HS115TC                | 12" Diffuser Kit         |
| FI09106* | HS115SF, HS115TC                | 12" Duct Adapter         |
| FI09107  | HS115SF, HS115TC                | 12" x 30" Short Duct     |
| FI09108  | HS115SF, HS115TC                | 12" x 10' Long Duct      |
| FI09115  | HS190SF,HS250SF,HS190TC,HS250TC | 16" Diffuser Kit         |
| FI09116  | HS190SF,HS250SF,HS190TC,HS250TC | 16" Duct Adapter         |
| FI09117  | HS190SF,HS250SF,HS190TC,HS250TC | 16" x 30" Short Duct     |
| FI09118  | HS190SF,HS250SF,HS190TC,HS250TC | 16" x 10' Long Duct      |
| FI09119  | HS190SF,HS250SF,HS190TC,HS250TC | Storage Box              |
| F273737  | All Models                      | Dual LP Tank Hook Up Kit |



FI09105



FI09106



FI09118



F273737

\* Optional Accessory - Required for Vented Operation

| Model # | Gas Type        | Operation      | Btu's                             | Description  | Width | Depth | Height |
|---------|-----------------|----------------|-----------------------------------|--|-------|-------|--------|
| HS115SF | LP              | Spark Ignition | 81,000 - 111,000                  | Nomad Single Fuel Tent & Construction Heater w/Thermostat and 20' Cord, 15' Hose and Regulator | 15"   | 30"   | 23.8"  |
| HS190SF | LP              | Spark Ignition | 127,000 - 190,000                 | Nomad Single Fuel Tent & Construction Heater w/Thermostat and 20' Cord, 15' Hose and Regulator | 20.3" | 35.8" | 34.8"  |
| HS250SF | LP              | Spark Ignition | 181,000 - 249,000                 | Nomad Single Fuel Tent & Construction Heater w/Thermostat and 20' Cord, 15' Hose and Regulator | 20.3" | 35.8" | 34.8"  |
| HS115TC | LP/NG Dual Fuel | Spark Ignition | 81-111,000 LP / 77,000-108,000 NG | Nomad Dual Fuel Tent & Construction Heater w/Thermostat, 20' Cord, 15' Hose and Regulator      | 15"   | 30"   | 23.8"  |
| HS190TC | LP/NG Dual Fuel | Spark Ignition | 127-190,000 LP / 129-184,000 NG   | Nomad Dual Fuel Tent & Construction Heater w/Thermostat, 20' Cord, 15' Hose and Regulator      | 20.3" | 35.8" | 34.8"  |
| HS250TC | LP/NG Dual Fuel | Spark Ignition | 181-249,000 LP / 172-249,000 NG   | Nomad Dual Fuel Tent & Construction Heater w/Thermostat, 20' Cord, 15' Hose and Regulator      | 20.3" | 35.8" | 34.8"  |



Non-stock/special order items are not cancellable or returnable

Shop online at [www.raymurray.com](http://www.raymurray.com) or call 800-628-5044