

Globe, Angle, & Ball Valves

FISHER™

FISHER GLOBE & ANGLE VALVES

Features:

- Heavy-Duty Ductile Iron for either LPG or Anhydrous Ammonia
- PTFE Chevron Packings for sealing against leakage
- 1/4" plugged port opening (for use of relief valves, bleeder valve or gauges)
- Valves range in size from 1/2" 2" FNPT
- Ball bearing valve disc construction on 1-1/4" and larger sizes
- Strong connection to the stem to protect the disc under backflow conditions



N310 SERIES



N410 SERIES

RMI Part No.		Size (FNPT)
Globe Valve	Angle Valve	
N301-04	N401-04	1/2"
N301-06	N401-06	3/4"
N301-08	N401-08	1"
N310-10	N410-10	1-1/4"
N310-12	N410-12	1-1/2"
N310-16	N410-16	2"
N350 & N450 Economy Series		
N350-04	N450-04	1/2"
N350-06	N450-06	3/4"

MEC GLOBE & ANGLE VALVES



Features:

- All stainless steel internal components with rotating seat disc design & V-Cup PTFE packing stem seals
- Double stem seal design ensures leak free operation
- Double lead stem thread ensures quick and efficient operation
- Durable ductile iron valve body with automotive grade powder coated finish
- 1-1/4" & larger globe valves have 35° seat angle for maximum product flow
- 1-1/4" & larger globe valves designed ergonomically correct for bobtail, transport, and bulk plant applications
- 1-3/4", 2-1/4" & 3-1/4" acme threads available on globe valves
- Rated for 400 WOG
- Operating temperature -40° to + Fahrenheit



ME815-2F



ME825-16

RMI Part No.		Size	Side Port (QTY 2)
Angle Valve	Globe Valve		
ME815-4	ME825-4	1/2" FNPT	1/4"
ME815-6	ME825-16	3/4" FNPT	1/4"
ME815-8	ME825-8	1" FNPT	1/4"
ME815-10	ME825-10	1-1/4" FNPT	1/4"
ME815-12	ME825-12	1-1/2" FNPT	1/4"
ME815-16	ME825-16	2" FNPT	1/4"
-	ME824-16	2" FNPT	1/4"
ME815-2F	ME825-2F	2"-300LB FLANGED	1/4"
ME815-24	ME825-24	3" FNPT	1/4"
ME815-3F	ME825-3F	3"-300LB FLANGED	1/4"

NOTE: Additional seal trims available. To order, add "V" after the prefix part number for FKM or "T" for PTFE. i.e. ME815V-10 or ME815T-10.

ACCESSORIES

RMI Part No.	Description
ME829	E-Z Turn Knob
ME815-16LHK	Push-To-Turn Locking Handwheel Kit

Globe, Angle, & Ball Valves



MEC EXCELA-FLANGE HIGH FLOW GLOBE & ANGLE VALVES

The ME813, ME819, & ME823 series valves feature Excela-Flange 4-bolt inlet/outlet design that can be easily adapted to both NPT thread or socket weld type A companion flanges (ME840 & ME841 Series). This system allows installers the ability to eliminate unnecessary connections as well as leak points by integrating a 4-bolt flange union at the valve inlet/outlet connections.

RMI Part No.		Flange	Inlet	Outlet
Angle	Globe			
ME813-10	ME823-10	Double	4-Bolt Type B Flange	4-Bolt Type B Flange
ME813-16	ME823-16	Double		
-	ME819-10	Single		1-1/4" FNPT
-	ME819-16	Single		2" FNPT

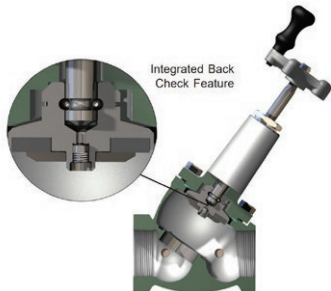
NOTE: Additional configurations available, please contact RMI customer service for more info

MEC PILOT & INTEGRATED BACK CHECK GLOBE & ANGLE VALVES

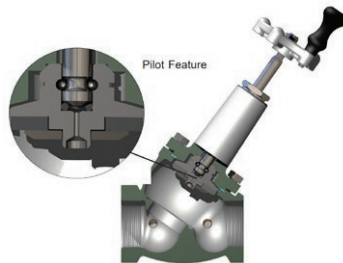
Pilot Feature: (P) This valve model incorporates a pilot orifice feature to facilitate pressure equalization in sections of system piping that have bidirectional flow or high differential pressures. This prevents backpressure build-up which greatly reduces the opening torque required and prevents premature wear of the valve seat.

Integrated Back Check Feature: (IBC) These valve models incorporate an integrated backcheck feature to allow trapped downstream pressure to automatically bypass to the upstream side of the valve. These valves are designed for systems with flow in one direction, creating a loop system that prevents the product from relieving to the atmosphere, making for a lower emission environmentally friendly option.

RMI Part No.				Size (FNPT)	Port (FNPT)
Angle		Globe			
IBC	Pilot	IBC	Pilot		
ME815IBC-16	ME815P-16	ME825IBC-16	ME825P-16	2"	2x 1/4"
-	-	ME824IBC-16	ME824P-16	2"	2x 1/2"



INTEGRATED BACK CHECK



PILOT FEATURE



ME813 SERIES



ME819 SERIES

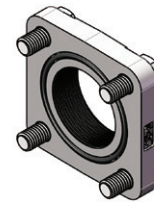
MEC FLANGE KITS

Features:

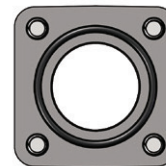
- Available in 1-1/4" - 2" FNPT or Socket Weld configurations
- 400WOG Rating
- Cuts installation and maintenance labor time
- Type "A" flanges include bolts and o-ring

RMI Part No.	Size	Flange Type
ME842-10-107	1-1/4" FNPT	B
ME843-10-107	1-1/4" SW	B
ME842-12-107	1-1/2" FNPT	B
ME843-12-107	1-1/2" SW	B
ME842-16-107	2" FNPT	B
ME843-16-107	2" SW	B
ME840-10F	1-1/4" FNPT	A
ME841-10F	1-1/4" SW	A
ME840-12F	1-1/2" FNPT	A
ME841-12F	1-1/2" SW	A
ME840-16F	2" FNPT	A
ME841-16F	2" SW	A

NOTE: Flanges are also available in Stainless Steel - add SS after part # prefix (i.e. ME841SS-16F)

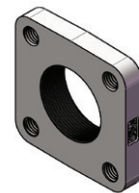


TYPE "A"

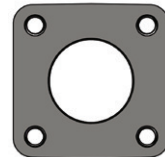


O-RING SEAL

FLANGE - TYPE A



TYPE "B"



FLAT FACE

FLANGE - TYPE B

Globe, Angle, & Ball Valves



JOMAR FULL-PORT BRASS BALL VALVES

Features:

- Forged brass body with chrome plated ball
- AGA & UL Listed
- 500 PSI WOG - 1" - 2" sizes
- 600 PSI WOG - 1/4" - 3/4" sizes

RMI Part No.	Thread Size	Port Diameter	Valve Length
100-701	1/4"	3/8"	1-13/16"
100-702	3/8"	3/8"	1-7/8"
100-703	1/2"	1/2"	2-7/16"
100-704	3/4"	3/4"	2-11/16"
100-705	1"	1"	3-5/16"
100-706	1-1/4"	1-1/4"	3-13/16"
100-707	1-1/2"	1-1/2"	4-3/16"
100-708	2"	2"	5"
100-710	3"	3"	7.08"



100-704

JOMAR BRASS SINGLE UNION END BALL VALVES

- Forged brass body
- 3/8" - 1" have 1/8" tap
- 1-1/4" - 2" have 1/4" tap
- FM and CSA approved

RMI Part No.	Thread Size	Port Diameter	Valve Length
160-102	3/8"	0.39	2.93
160-103	1/2"	0.59	3.17
160-104	3/4"	0.79	3.52
160-105	1"	1.00	4.19
160-106	1-1/4"	1.26	5.01
160-107	1-1/2"	1.57	5.57
160-108	2"	2.00	6.31



160-104

JOMAR CARBON STEEL UNION END BALL VALVES

Jomar valves feature full port flow, Teflon seats, Buna-N seals, and union ends for easy installation and low service and maintenance costs. Carbon steel body with forged carbon steel union ends. UL listed, LP-Gas 250 PSI, 400 PSI W.O.G.

RMI Part No.	Thread Size	Length
100-991	1/4"	3.543
100-992	3/8"	3.543
100-993	1/2"	3.543
100-994	3/4"	3.701
100-995	1"	4.252
100-996	1-1/4"	4.567
100-997	1-1/2"	5.197
100-998	2"	5.669



100-995

JOMAR CARBON STEEL FLANGED BALL VALVES

Features:

- Full Port
- Carbon Steel Body
- PTFE Seats API607(Fire Tite)
- Wrench operator
- 316 Stainless Ball and Stem
- Fire safe stem and body graphite seals
- Air tested seat leakage: 85 PSI
- Locking device comes standard
- Available up to 8"
- 150# Flanged Valves are available

RMI Part No.	Thread Size	Length
600-228	2"	8.50"
600-230	3"	11.10"
600-231	4"	12.00"

*Larger sizes available as special order - call RMI customer service for more info.



600-228

Globe, Angle, & Ball Valves



JOMAR STAINLESS STEEL FULL PORT BALL VALVES

Features:

- Stainless Steel full port ball valve
- 316 SS ball and stem
- 1000 psig pressure rating
- UL listed

RMI Part No.	Flange Size	Port Diameter	Length
100-961	1/4"	0.43	2.21
100-962	3/8"	0.43	2.21
100-963	1/2"	0.56	2.60
100-964	3/4"	0.61	2.99
100-965	1"	1.00	3.54
100-966	1-1/4"	1.25	3.94
100-967	1-1/2"	1.50	4.41
100-968	2"	1.97	5.00



100-964

JOMAR STAINLESS STEEL 3-WAY BALL VALVES

- Self-Adjusting Stem Packing
- ISO 5211 Mounting Pad
- Locking Device May Be Locked in Open or Closed Position
- Four Seat Standard
- Temperature Range: -20°F to 450°F
- Blow-out Proof Stem
- 1000 WOG

RMI Part No.	Thread Size	Length
A850L-14	1/4"	2.83
A850L-38	3/8"	2.83
A850L-12	1/2"	3.33
A850L-34	3/4"	3.94
A850L-1	1"	4.45
A850L-114	1-1/4"	4.94
A850L-112	1-1/2"	5.91
A850L-2	2"	6.85



A850L-34

JOMAR 3-PIECE FULL PORT BALL VALVES

316 SS Body, ball and stem, pressure rated to 1000 psig, UL listed for flammable liquids, propane, natural gas and anhydrous ammonia with locking handle.

NOTE: Carbon steel w/ threaded or socket weld ends are available in 1/2" - 2" sizes - call RMI customer service for more info.

RMI Part No.	Thread Size	Length
501-301	1/4"	2.36
501-302	3/8"	2.36
501-303	1/2"	2.76
501-304	3/4"	3.03
501-305	1"	3.62
501-306	1-1/4"	4.13
501-307	1-1/2"	4.72
501-308	2"	5.43
501-310	3"	7.52
501-311	4"	8.5



500-301



APOLLO 3-WAY STAINLESS STEEL VALVES

The Apollo 76-600 Series is a standard port, threaded 3-way stainless steel ball valve.

- Reinforced Seats
- Meets NACE MR0175 (2000) & MR0103 (2012)
- Blowout-Proof Stem Design
- Adjustable Packing Gland
- Investment Cast Body
- NSF/ANSI/CAN 61, Annex G

RMI Part No.	Size
76-60101A	1/4"
76-60201A	3/8"
76-60301A	1/2"
76-60401A	3/4"
76-60501A	1"
76-60701A	1-1/2"
76-60801A	2"



76-60101A

Globe, Angle, & Ball Valves



APOLLO FULL PORT BRASS BALL VALVES

- 600 PSI WOG
- UL Listed
- Teflon packing and bearing
- Blow-out proof stem
- Chromium plated ball
- Cast bronze construction
- Large port opening



80-103

RMI Part No.	Thread Size	Port Diameter	Valve Length
80-101	1/4"	3/8"	2-1/16"
80-102	3/8"	3/8"	2-1/16"
80-103	1/2"	1/2"	2-1/4"
80-104	3/4"	11/16"	3"
80-105	1"	7/8"	3-3/8"
80-106	1-1/4"	1"	4"
80-107	1-1/2"	1-1/4"	4-3/8"
80-108	2"	1-1/2"	4-11/16"
80-100	3"	2-1/2"	6-3/4"

APOLLO FULL PORT BALL VALVES WITH SPRING RETURN HANDLE

- Excellent for bleed lines and blow offs
- Stainless steel lever components
- Brass valves are rated for 600psig
- Stainless valves are rated for 200psig up to 1" and 1500psig 1-1/4" - 2"



71-503-01



76-503-01

RMI Part No.		Size	Valve Length
Brass	Stainless		
71-501-01	76-501-01	1/4"	2.25
71-502-01	76-502-01	3/8"	2.25
71-503-01	76-503-01	1/2"	2.25
71-504-01	76-504-01	3/4"	3.00
71-505-01	76-505-01	1"	3.37
71-506-01	76-506-01	1-1/4"	4.00
71-507-01	76-507-01	1-1/2"	4.37
71-508-01	76-508-01	2"	5.50

APOLLO 300LB FLANGED FULL PORT BALL VALVES

Features:

- Full-port body
- Antistatic grounded stem
- Slot vent for thermal expansion
- Two-position locking device

Note: Other sizes, flange ratings, and materials are available, contact RMI customer service for more information.

RMI Part No.	Flange Size	Port Diameter	Length
88A-908-01	2"	2.00	8.50
88A-900-01	3"	3.00	11.12
88A-90A-01	4"	4.00	12.00



88A SERIES

commercial products

don't just buy products, buy solutions

- 100% factory tested
- made in America
- world's most trusted ball valve

Aalberts integrated piping systems
customer service 704.841.6000
aalberts-ips.us

Internal Valves

FISHER™

FISHER THREADED INTERNAL VALVES

Fisher offers the widest variety of threaded internal valves in the industry. While their most frequent use is in the liquid and vapor openings of bobtail and transport trucks, the valves can also be used in stationary storage tanks, complying with NFPA 58 requirements. Designed as primary shutoff valves, the units are designed with several features that help control product discharge.

All UL-listed internal valves are suitable for LPG or Anhydrous Ammonia (NH₃) service. Special construction is available for other compressed gases. All threaded internal valves have a compact, one-piece body design. They can be actuated manually, by cable control, or with an air cylinder.

Specifications:

Pressure Rating: 400 psig WOG

Temperature: Up to 150°F

Body: Ductile Iron (C471/C477)
Cast Steel (C402/C407)

Seat Discs: Synthetic Rubber

Shaft & Stem: Stainless Steel



C407

C407 1-1/4" NPT valve is excellent for the main valve on small capacity pumping systems, in-line installations, and vapor lines on bobtail trucks that gives compliance with MC331 specifications.

C477

C477 2" and 3" valves with straight through flow (one outlet) is the most economical unit in the series. It can be used on bobtail, transport, stationary tank and in-line installations.

C471

C471 internal valve with two outlets, bottom and side. The side outlet permits installing horizontal piping immediately adjacent to the tank. The C471 is used primarily on bobtails and transports.

C486

C486 Series (Flange-by-NPT) - Available in 3 in. end connections. This unit was designed with an integrally cast inlet flange to quickly bolt to existing installations that historically required a valve to be threaded into a flange. Outlet is standard 3 in. FNPT.

Connection Inlet X Outlet	RMI Part No.		Closing Flow (GPM)		Vapor Capacity	
	Straight Body	Tee Body	Half Coupling	Full Coupling	25 PSIG	100 PSIG
1-1/4" MNPT X 1-1/4" FNPT	C407-10-04	-	40	25	7,400	12,700
	C407-10-05	-	50	35	9,600	16,400
	C407-10-08	-	80	65	15,800	27,600
2" MNPT X 2" FNPT	C477-16-10	C471-16-10	105	60	26,100	45,000
	C477-16-15	C471-16-15	150	80	39,400	69,000
	C477-16-25	C471-16-25	250	130	-	-
3" MNPT X 3" FNPT	C477-24-16	C471-24-16	160	120	41,100	71,000
	C477-24-26	C471-24-26	265	230	71,800	127,000
	C477-24-37	C471-24-37	375	320	99,000	178,000
	C477-24-46	C471-24-46	460	380	-	-
3" CL300 RF X 3" FNPT	C486-24-16	-	160	120	41,100	71,000
	C486-24-26	-	265	230	71,800	127,000
	C486-24-37	-	375	320	99,000	178,000
	C486-24-46	-	460	380	-	-



Non-stock/special order items are not cancellable or returnable

Shop online at www.raymurray.com or call **800-628-5044**

Internal Valves

FISHER™

FISHER FLANGED INTERNAL VALVES

Flanged valves provide a sturdy and compact means of directly mounting a pump or piping connection. Special stud bolts, weakened with a groove on the outside diameter, are furnished with the valves to permit the pump or piping to shear off in the event of an accident, leaving the valve intact. A built-in excess flow valve reduces the chance of uncontrolled product discharge when flow exceeds the rated flow capacity. All flanged valves have an internal screen for pump protection that can be easily removed if the valve is used primarily for filling the tank. They also contain PTFE packing to resist stub shaft leakage. These valves can be activated manually, by cable control, or by air cylinder.

Flanged Valve Specifications

Pressure Rating: 400 psig WOG

Temperature: Up to 150°F

Body: Cast Steel (C483/C484-24)
Stainless Steel (C404-32)

Packing: PTFE

Seat Discs: Synthetic Rubber

Stub Shaft and Stem: Stainless Steel

Gaskets: Non-asbestos spiral wound graphite



C483-24



C484-24



C404-32

C483-24

A double-flange unit designed for special bobtail truck applications where the pump must be lowered to clear the truck frame or other obstacles. A special shear section in the body permits the lower section of the valve to shear off in the event of an accident, leaving the critical shutoff parts within the tank.

C484-24

A single-flange unit widely used on bobtail and transport trucks for a compact means of direct pump connection to the valve outlet. Another application for the Type C484-24 is on in-line installations.

C404-32

Used widely on transport trucks and large storage tanks, the 4 in. / DN 100 flanged unit comes standard with all stainless steel construction for maximum protection against rust and corrosion. For easy field maintenance, the seat ring is field replaceable.

NOTE: The Type C404-32 is the only internal valve that cannot be opened and closed by the Type P650 cable control.

RMI Part No.					Tank Connection	Outlet Connection	UL. Rated Closing Flow* GPM
Single Flange Manual Operated	Double Flange Manual Operated	Cable Operation	Single Flange Air Operation	Manual Operation			
C484-24-16	C483-24-16	-	-	-	3" 300lb. ANSI RF Mod. Flange (4-13/16" dia. Bore)	3" 300 lb. ANSI RF Flange	160
C484-24-25	C483-24-26	-	-	-			250/265
C484-24-40	C483-24-40	-	-	-			400
-	-	C404-32-400	C404A-32-400	C404M-32-400	4" 300 lb. ANSI RF Mod. Flange (5-7/8" dia. Bore)	4" 300 lb. ANSI RF Flange	400*
-	-	C404-32-600	C404A-32-600	C404M-32-600			600*
-	-	C404-32-800	C404A-32-800	C404M-32-800			800*

*Closing flow vertical-down

STUDS, NUTS, AND GASKETS

Valve Model	Flange Size	RMI Part No.			
		Tank Gasket Valve/Tank	Bottom Gasket Pump/Valve	Studs	Nuts
C404/C484-24	3"	T13603T0012	1P77699152	1P790832983 (8)	1A368124112 (16)
C403/C483-24	3"	T13603T0012	300/0300	1N946228982 (16)	1A368124112 (16)
C404-32	4"	1P110799152	1P877699152	T1118131032 (8)	1A368124112 (16)



Non-stock/special order items are not cancellable or returnable

Shop online at www.raymurray.com or call **800-628-5044**

Internal Valves



MEC THREADED INTERNAL VALVES

ME990

The ME990 Series internal valves are intended for use on bobtails, transport trucks, and storage tanks in directional or bi-directional flow applications. Can be equipped with manual latch, pneumatic, or rotary actuator devices.

ME991

The ME991 Series internal valves feature the Excelsa-Flange 4-bolt outlet flange design that can be easily adapted to both NTP thread or socket weld Type B companion flanges ranging from 1-1/4" to 2" in diameter. This system reduces potential leak points and makes installation a breeze.

ME992

The ME992 Series Tee Body internal valves feature an additional side outlet, allowing for horizontal piping configurations without the need for extra pipe fittings.

RMI Part No.				Valve Type	Tank Connection	Outlet Connection
Valve Only	Valve w/ Pneumatic Actuator	Valve w/ Rotary Actuator	Valve w/ Manual Latch			
ME990-10-"X"	ME990A-10-"X"	ME990AR-10-"X"	ME990M-10-"X"	Standard	1-1/4" MNPT	1-1/4" FNPT
ME991-10-"X"	ME991A-10-"X"	ME991AR-10-"X"	ME991M-10-"X"	Excelsa-Flange	1-1/4" MNPT	Type A Flange
ME992-10-"X"	ME992A-10-"X"	ME992AR-10-"X"	ME992M-10-"X"	Tee Body	1-1/4" MNPT	1-1/4" FNPT
ME990-10/12-"X"	ME990A-10/12-"X"	ME990AR-10/12-"X"	ME990M-10/12-"X"	Standard	1-1/4" MNPT	1-1/2" FNPT
ME992-12-"X"	ME992A-12-"X"	ME992AR-12-"X"	ME992M-12-"X"	Tee Body	1-1/2" MNPT	1-1/2" FNPT
ME990-16-"X"*	ME990A-16-"X"	ME990AR-16-"X"	ME990M-16-"X"	Standard	2" MNPT	2" FNPT
ME992-16-"X"*	ME992A-16-"X"	ME992AR-16-"X"	ME992M-16-"X"	Tee Body	2" MNPT	2" FNPT
ME990-24-"X"*	ME990A-24-"X"	ME990AR-24-"X"	ME990M-24-"X"	Standard	3" MNPT	3" FNPT
ME992-16-"X"*	ME992A-16-"X"	ME992AR-16-"X"	ME992M-16-"X"	Tee Body	2" MNPT	3" FNPT

* Available in Stainless Steel - Add "SS" to prefix (i.e. ME990SS)

AVAILABLE CLOSING FLOW RATES (GPM)

"X"	1-1/4"	1-1/2"	2"	3"
35	X			
50		X		
55	X			
65		X		
85	X	X		
110		X	X	
120		X		
160			X	
175				X
250				X
260			X	
300				X
375				X
400				X
475				X
500				X



ME990-24



ME991-10



ME992-12



Non-stock/special order items are not cancellable or returnable

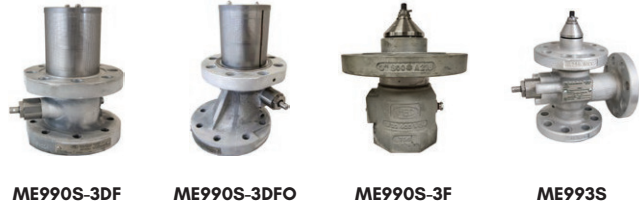
Shop online at www.raymurray.com or call **800-628-5044**

Internal Valves



MEC FLANGED INTERNAL VALVES

Marshall Excelsior manufactures a variety of sizes and configurations of flanged internal valves for use on bobtail delivery trucks, transport trucks, and large storage tanks. All valve models are equipped with a break-away feature in the cast body which permits the pump or piping to shear off in the event of side impact, leaving the valve poppet intact and protecting the tank from catastrophic product loss.



ME990-3DFO SERIES OFFSET INTERNAL VALVES

These valves prevent pump installation interference with truck frame rails, cross members, PTO covers, drive shafts, and other common obstacles when remounting bobtail vessels onto new chassis. The offset valve is equipped standard with three separate packing gland locations to prevent interference while mounting the valve actuator no matter how you choose to mount the valve.

RMI Part No.				Valve Type	Tank Connection	Outlet Connection
Valve Only	Valve w/ Pneumatic Actuator	Valve w/ Rotary Actuator	Valve w/ Manual Latch			
ME990S-2F-16-"X"*	ME990SA-2F-16-"X"	ME990SAR-2F-16-"X"	-	Single Flange	2" 300# Modified Flange	2" FNPT
ME990S-2DFM-"X"*	ME990SA-2DFM-"X"	ME990SAR-2DFM-"X"	-	Double Flange	2" 300# Modified Flange	2" 300# Modified Flange
ME991-16-"X"*	ME991A-16-"X"	ME991AR-16-"X"	ME991M-16-"X"	Single Flange	2" MNPT	2" 300# Flange
ME992S-2F-16-"X"*	ME992SA-2F-16-"X"	ME992SAR-2F-16-"X"	-	Tee Body	2" 300# Modified Flange	2" FNPT (2)
ME993S-16-"X"	ME993SA-16-"X"	ME993SAR-16-"X"	-	Tee Body	2" 300# Modified Flange	2" 300# Modified Flange (2)
ME990-3F-"X"	ME990A-3F-"X"	-	-	Single Flange	-	3" 300# Flange
ME990S-3F-24-"X"*	ME990SA-3F-24-"X"	ME990SAR-3F-24-"X"	-	Single Flange	3" 300# Modified Flange	3" FNPT
ME990S-3DF-"X"*	ME990SA-3DF-"X"	ME990SAR-3DF-"X"	-	Double Flange	3" 300# Flange	3" 300# Flange
ME990S-3DFM-"X"*	ME990SA-3DFM-"X"	ME990SAR-3DFM-"X"	-	Double Flange	3" 300# Modified Flange	3" 300# Modified Flange
ME990S-3DFO-"X"*	ME990SA-3DFO-"X"	ME990SAR-3DFO-"X"	-	DF Offset	3" 300# Flange	3" 300# Flange
ME991-24-"X"*	ME991A-24-"X"	ME991AR-24-"X"	ME991M-24-"X"	Single Flange	3" MNPT	3" 300# Flange
ME992S-3F-24-"X"*	ME992SA-3F-24-"X"	ME992SAR-3F-24-"X"	-	Tee Body	3" 300# Modified Flange	3" FNPT (2)
ME993S-24-"X"	ME993SA-24-"X"	ME993SAR-24-"X"	-	Tee Body	3" 300# Modified Flange	3" 300# Modified Flange (2)
ME990-4F-"X"	ME990A-4F-"X"	ME990AR-4F-"X"	ME990M-4F-"X"	Single Flange	-	4" 300# Flange
-	-	ME990SAR-4DFM-"X"*	-	Double Flange	4" 300# Modified Flange	4" 300# Modified Flange

* Available in Stainless Steel - Add "SS" to prefix (i.e. ME990SS)

AVAILABLE CLOSING FLOW RATES (GPM)

"X"	2"	3"	4" SF	4" DF
110	X			
160	X			
175		X		
250		X		
260	X			
300		X		
375		X	X	X
400		X		
475		X		
500		X	X	X
650			X	X
800				X
850			X	
900				X
1000				X
1250			X	
1500			X	

STUDS, NUTS, AND GASKETS

Internal Valve Series	RMI Part No.			
	Top Gasket Valve/Tank	Bottom Gasket Pump/Valve	Studs	Nuts
ME990-2F-16, ME992S-2F-16	ME980SK-16-103	-	ME990-2F-16-103	ME980SK-16-102
ME991-16	-	ME980SK-16-103	ME990-2F-16-103	ME980SK-16-102
ME990-3F-24, ME992S-3F-24	ME904S-3F-027	-	ME904SK-01	ME990-152
ME991-24	-	ME904S-3F-027	ME904SK-01	ME904SK-02
ME990-3F	ME990-3DF-153	ME990-3F-109	ME990-3F-110-01	(8) ME990-152, (8) ME904SK-02
ME990-4F	ME990-4F-153	ME990-4F-172	ME990-4F-151	(8) ME990-152, (8) ME904SK-02
ME990S-2DFM	ME980SK-16-103	ME980SK-16-103	ME980-2F-16-103	ME980SK-16-102
ME990S-3DF, ME990S-3DFO	ME990-3DF-153	ME904S-3F-027	ME990-151	ME904SK-02
ME990S-3DFM	ME904S-3F-027	ME904S-3F-027	ME990-151	ME904SK-02
ME990SAR-4DFM	ME990-4DFM-129	ME990-4DFM-129	ME990-151	ME904SK-02



Non-stock/special order items are not cancellable or returnable

Shop online at www.raymurray.com or call **800-628-5044**

Emergency Shutoff Valves

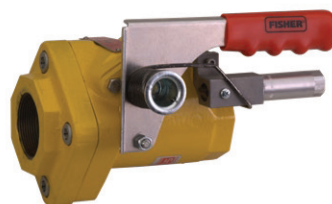
FISHER™

FISHER SNAPPY JOE EMERGENCY SHUTOFF VALVES FOR BULK PLANTS

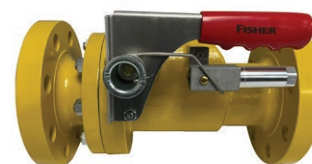
Snappy Joe Type N551 Emergency Shutoff Valves (ESVs) are designed for in-line installations, usually near a bulkhead. The valves provide a means of shutting off gas in the event of a hose rupture or piping break at the transfer area to avoid a large-scale loss of LPG. The valves can be manually opened and closed at the installed location or closed remotely by either cable or air. A remote operating actuator is also available.

BULK PLANT EMERGENCY SHUTOFF VALVES

RMI Part No.	Inlet/Outlet	Flow Rate @ 2PSI Diff.
N551-10	1-1/4" FNPT	110 GPM
N551-16	2" FNPT	190 GPM
N551-24	3" FNPT	580 GPM
N551-24F	3" 300# Flange	850 GPM



N551-16



N551-24F

N551 REPLACEMENT PARTS

RMI Part No.	Description
P551	External Closing Spring Kit for Type N550/N551 with Cable Release Latch Block
P551A	External Closing Spring Kit for Type N550/N551 ESV With Type P327A Pneumatic Release Latch
T20677T0012	Handle For N551/N550 Alum

FISHER SNAPPY JOE EMERGENCY SHUTOFF VALVES FOR RAILROAD TANK CARS

Snappy Joe Emergency Shutoff Valves (ESVs) are designed for railcar protection and attach to the shutoff valves on railroad tank cars. Typically three ESVs are used - two on the liquid lines and one on the vapor line. NFPA 58 regulations call for ESV protection on both sides of the transfer hose or piping. Types N562 and N563 are UL® listed for service in Propane and Anhydrous Ammonia. Its Nitrile (NBR) elastomer is UL approved to -40°F / -40°C.

RMI Part No.	Elastomer	UL Listed	Inlet	Outlet	Closing Flow
N562-16	Nitrile	Yes	2" FNPT	2" FNPT	200 GPM
N562-18				2-1/4" M.ACME	
N562-26				3-1/4" M.ACME	
N563-16				2" FNPT	
N563-26	3-1/4" M.ACME	413 GPM			
N862_-16	E = EPDM K = Kalrez N = Neoprene T = Teflon V = Viton	No	2" FNPT	2" FNPT	200 GPM
N862_-18				2-1/4" M.ACME	
N862_-26				3-1/4" M.ACME	
N863_-16				2" FNPT	
N863_-26	3-1/4" M.ACME	413 GPM			



N562-16

Emergency Shutoff Valves



MEC EMERGENCY SHUTOFF VALVES FOR BULK PLANTS

- MEC Emergency Shutoff Valves for Bulk Plants
Powder-coated ductile iron body with cast hexagonal ends for maximum durability and ease of installation
- Integral swing-away check valve with soft seat to promote maximum product flow and minimize product loss in the event of a line failure
- All stainless steel internal component construction provides maximum corrosion resistance
- Provides clear visual indication if valve is open or closed
- UL listed for use with LP Gas and Anhydrous Ammonia - 400 PSI WOG
- Integral fusible element for automatic closure when exposed to fire
- Durable PTFE packing gland and resilient seals provide long-lasting service life



ME980-10



ME980-16-2F

Pneumatic Latch	RMI Part No.			Inlet/Outlet	OAL
	Cable Latch	w/ Pneumatic Actuator	w/ Rotary Actuator		
ME980-6	ME980C-6	-	-	3/4" FNPT	4-3/4"
ME980-8	ME980C-8	-	-	1" FNPT	4-3/4"
ME980-10	ME980C-10	ME980A-10	ME980AR-10	1-1/4" FNPT	5-3/8"
ME980-12	ME980C-12	ME980A-12	ME980AR-12	1-1/2" FNPT	5-3/8"
ME980-16	ME980C-16	ME980A-16	ME980AR-16	2" FNPT	6-7/8"
ME980-16-2F	ME980C-16-2F	ME980A-16-2F	ME980AR-16-2F	2" 300# Flange	11-7/8"
ME980-24	ME980C-24	ME980A-24	ME980AR-24	3" FNPT	9-5/8"
ME980-24-3F	ME980C-24-3F	ME980A-24-3F	ME980AR-24-3F	3" 300# Flange	14-1/8"
ME980-24-4F	ME980C-24-4F	ME980A-24-4F	ME980AR-24-4F	4" 300# Flange	14-1/4"

REPAIR KITS

Valve Size	RMI Part No.	
	Seal Repair Kit	Complete Repair Kit
3/4" - 1"	ME980-6SRK	ME980-6K
1-1/4"	ME980-10SRK	ME980-10K
1-1/2"	ME980-12SRK	ME980-12K
2"	ME980-16SRK	ME980-16K
3"-4"	ME980-24SRK	ME980-24K

ACCESSORIES

RMI Part No.	Description
ME980SK-16	Stud/Nut Kit for 2" Flanged ESVs
ME980SK-24	Stud/Nut Kit for 3" & 4" Flanged ESVs

MEC EXCELERATOR HIGH FLOW RAILCAR EMERGENCY SHUTOFF VALVES

Excelerator Railcar ESVs are designed to provide rapid and positive shutdown of gas lines should a downstream rupture or piping break occur during product transfer. They feature a built-in fusible element at the valve opening hub to ensure the ESV will automatically close when exposed to heat between 212°F and 250°F. Additionally, the Excelerator railcar ESVs are equipped with a poppet design similar to the MEC internal safety valves that provides an integral excess flow feature.

REPAIR KITS

RMI Part No.	Description	Closing Flow
ME983-16-150	High Flow Railecar ESV 2" FNPT X 2" FNPT	150 GPM*
ME983-16-250	High Flow Railecar ESV 2" FNPT X 2" FNPT	250 GPM
ME983-16-500	High Flow Railecar ESV 2" FNPT X 2" FNPT	500 GPM
ME983-16	High Flow Railecar ESV 2" FNPT X 2" FNPT	-

RMI Part No.	Description
ME983-SRK	Seal Repair Kit - Nitrile
ME983-VRK	Complete Valve Repair Kit - Nitrile
ME983-121	Replacement QD Nipple



ME983-16

* Recommended for vapor service - approx. closing flow 71,000 SCFH

Note: To order with Viton (V), Kalrez (K), or Neoprene (N) seals, add appropriate designator to part# prefix (i.e. ME983V-16)



Non-stock/special order items are not cancellable or returnable

Shop online at www.raymurray.com or call 800-628-5044

Actuators & Pneumatic Accessories

BRAKE CHAMBER STYLE ACTUATORS

These actuators are intended to be used at remote locations or operated directly off the air brake system in bobtail or transport applications. The actuator's smooth-acting cam opens the internal valve lever when air, nitrogen, or carbon dioxide is applied to the line. When pressure to the line is released, the internal valve automatically closes.

ROTARY STYLE ACTUATORS

These actuators are designed to maximize the life of the internal valve by eliminating side pressure on the valve's packing stem. The low-temp factory seals allow these actuators to be used with air, nitrogen, carbon dioxide, or LP-Gas vapor.

TECH TIP: All actuators include a thermal plug which melts between 208°F and 220°F, releasing pressure and closing the valve.

INTERNAL VALVE ACTUATORS

Internal Valve	RMI Part No.			
	Brake Chamber Style		Rotary Style	
	Fisher	MEC	Fisher	MEC
1-1/4" Threaded	-	ME205	P731	ME225
3" Threaded & All 2"	P639A	ME206	P714	ME226
3" Single Flange	P613	ME207SF	P713	ME226
3" Double Flange	P623	ME207	P723	ME227
4" Single Flange	P614A	ME208SF	P739	ME228

ESV ACTUATORS

RMI Part No.			
Brake Chamber Style		Rotary Style	
Fisher	MEC	Fisher	MEC
P539A	ME551	-	ME552



P389

ADDITIONAL INTERNAL VALVE ACTUATORS

RMI Part No.	Description
P389	Fisher Cylinder Style Actuator for 1-1/4" Internal Valves
ME205R	MEC Brake Chamber Style Actuator for RegO 1-1/4" Internal Valves



C483 WITH P723



ME551

MECH OPERATOR

RMI Part No.	Number of Levers
40397A	1
40397B	2
40397C	3
20040A001	Adjusting Bolt Assy



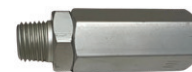
40397C

INTERNAL VALVE FILTERS

RMI Part No.	Description
750804	3/8" M.FL x 1/4" MPT
ME709	1/4" FPT x 1/4" MPT



750804



ME709

PNEUMATIC TUBING & FITTINGS

POLY TUBING

RMI Part No.	Description
020064	100' Coil 1/4" Tubing
020064-500	500' Coil 1/4" Tubing
020064-1000	1000' Coil 1/4" Tubing

BRASS DOT TUBE FITTINGS

RMI Part No.	Description
AQ62DOT4	1/4" Tube X Tube Union
AQ64DOT4	1/4" Tube Tee
AQ68DOT4X2	1/8" MNPT X 1/4" Tube Adaptor
AQ68DOT4X4	1/4" MNPT X 1/4" Tube Adaptor
AQ69DOT4X2	1/8" MNPT X 1/4" Tube Elbow
AQ69DOT4X4	1/4" MNPT X 1/4" Tube Elbow
AQ72DOT4X2	1/8" MNPT X 1/4" Tube Branch Tee
AQ72DOT4X4	1/4" MNPT X 1/4" Tube Branch Tee



020064



AQ64DOT4

Actuators & Pneumatic Accessories

CABLE & LATCH RELEASES

CABLE & LATCH RELEASES FOR INTERNAL VALVES

RMI Part No.		Description
Fisher	MEC	
Cable Style Remote Releases		
-	MEP980PN-100	Pneumatic Control/E-Stop Kit
P134	-	Fuse Link - 212°F
P650	MEP650	Open/Close Release w/ 50' Cable
P651	MEP651	Cable Release Only
P163A	-	25' Auxiliary Release
P164A	-	50' Auxiliary Release
P315	-	Remote release for 4" Internal Valves
P314	-	40' Cable for P315
Latch-Style Remote Releases		
P341	ME990-10-902	Release for 1-1/4" Internal Valves
P342	-	Bi-Directional Release for 1-1/4" Internal Valves
P340	MEP990-24	Manual Latch for 2" & 3" Internal Valves
P313	MEP990-4F	Latch Release for 4" Internal Valves



MEP650



P315



P341

CABLE RELEASES FOR ESVS

RMI Part No.		Description
Fisher	MEC	
-	ME980-905-25	25' Cable Release
P164B	ME980-905-50	50' Cable Release
P164C	ME980-905	Release Only- No cable
P327D	ME980-904K	Pneumatic Release
Additional ESV Accessories		
MINI-1		3-Way Pneumatic Valve
SN-PULL-V		Pull to Close Sign
SN-PUSH-V		Push to Close Sign

PNEUMATIC REGULATORS

Regulators for use in pneumatic systems. 0-100 PSIG delivery pressure, dual gauges.

RMI Part No.	Description
REB-4-3	CO ₂ Regulator
REB-7-3	N ₂ Regulator

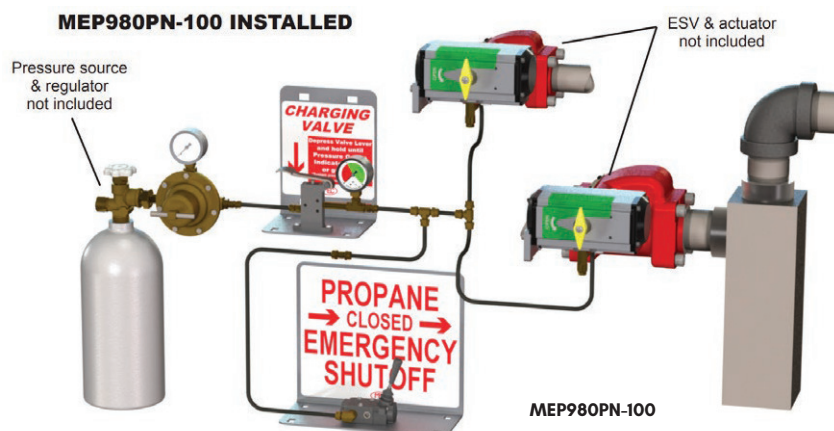


REB-4-3

MEC REMOTE VALVE KIT

Used in conjunction with pneumatic controlled emergency shutoff valves or internal valves to remotely open and close using compressed gas. Each kit includes all necessary components for connecting and charging a pneumatic control system complete with brackets, mounting hardware, and necessary placarding in a variety of orientations for fast & reliable remote system shutdown.

RMI Part No.	Description
MEP980PN-100	MEC Complete Pneumatic Controls / E-Stop Kit w/ Placards & 100' Poly Tubing
MEP980PN-105	Compression Tube Extension Adapter - 1/8" MNPT x 1/4" CC
MEP980PN-106	Compression Tube Extension Tee - 1/4" CC
MEP980PN-113	Tubing Extension 1/4" x 100 ft roll



Non-stock/special order items are not cancellable or returnable

Shop online at www.raymurray.com or call 800-628-5044

Back Check Valves, Flow Indicators, & Strainers

BACK CHECK VALVES

Back check valves provide flow protection to container openings or liquid lines where flow is intended for one direction. The valve is normally closed until pressure activates the valve when flow is directed into piping or containers causing the back check to open. When flow stops or reverses, the check returns to the closed position. MEC's back check valves feature a dual-purpose removable o-ring for optional metal-to-metal seating.

FISHER BACK CHECK VALVES

RMI Part No.		Outlet	Inlet	Seat	Propane Flow GPM
Brass	Steel				
G100	-	3/4" MNPT	3/4" FNPT	Metal	21
G101	-	1-1/4" MNPT	1-1/4" FNPT		55
G102	G112	2" MNPT	2" FNPT		150
G109	-	2" MNPT	2" FNPT		150
-	G104	3" MNPT	3" FNPT	Soft	250
-	G105	2" MNPT	2" MNPT & 1-1/4" FNPT		137.5
-	G106	3" FNPT	2" MNPT		254
-	G107	3" MNPT	3" MNPT & 2" FNPT		254



G105

MEC BACK CHECK VALVES

RMI Part No.			Outlet	Inlet	Seat	Propane Flow GPM
Brass	Steel	Stainless				
ME870-6	ME870S-6	ME870SS-6	3/4" MNPT	3/4" FNPT	Removable Soft Seat	24
ME870-10	ME870S-10	ME870SS-10	1-1/4" MNPT	1-1/4" FNPT		61
ME870-12	-	-	1-1/2" MNPT	1-1/2" FNPT		112
ME870-16	ME870S-16	ME870SS-16	2" MNPT	2" FNPT		187
-	ME872S-16	-	2" MNPT	2" MNPT	187	
-	ME870S-24	-	3" MNPT	3" FNPT	449	
-	ME872S-24	-	3" MNPT	3" MNPT & 2" FNPT	449	
-	ME870SBN-10	-	1-1/4" MNPT	1-1/4" FNPT	Bonded Soft Seat	61
-	ME870SBN-16	-	2" MNPT	2" FNPT		187
-	ME872SBN-16	-	2" MNPT	2" MNPT		187
-	ME870SBN-24	-	3" MNPT	3" FNPT		449
-	ME872SBN-24	-	3" MNPT	3" MNPT & 2" FNPT		449



ME870S-16

FISHER SWING CHECK VALVES

The G200 Series swing check valves are specifically intended for heavy-duty in-line service at the bulk plant's transfer area. The G200 series permits flow in one direction only.



G200

RMI Part No.		Inlet/Outlet	Propane Flow GPM
Flow Indicator	Standard		
G201-10	G200-10	1-1/4" FNPT	190
G201-16	G200-16	2" FNPT	350
G201-24	G200-24	3" FNPT	800

MEC SWING CHECK VALVES

The ME981 series swing check valves provide a soft seat back check valve to prevent reverse product flow. The large, easy-read flow indicator gives operators a visual inspection point for monitoring liquid flow conditions.

RMI Part No.		
Flow Indicator	Standard	Inlet/Outlet
ME981-10	ME982-10	1-1/4" FNPT
ME981-16	ME982-16	2" FNPT
ME981-16-2F	ME982-16-2F	2" 300# Flange
ME981-24	ME982-24	3" FNPT
ME981-24-3F	ME982-24-3F	3" 300# Flange
ME981-24-4F	ME982-24-4F	4" 300# Flange



ME981-10

Back Check Valves, Flow Indicators, & Strainers

SVC SERIES SWING CHECK VALVES

- Economical
- Horizontal Swing Type
- Bronze Construction
- 600 PSIG

RMI Part No.	Size	Length
SVC050	1/2"	2.63"
SVC075	3/4"	3.13"
SVC100	1"	3.75"
SVC125	1-1/4"	4.75"
SVC150	1-1/2"	4.94"
SVC200	2"	5.81"



SVC100

MEC SIGHT FLOW INDICATORS

Enables visual inspection of liquid flow conditions. Includes integral swing check serving as back check valve. May be used as an emergency shutoff valve. 400 PSI WOG.

RMI Part No.	Inlet/Outlet
ME875S-16	2" FNPT
ME874S-16	Type B Flange
ME875S-24	3" FNPT
ME875S-3F	3" 300# Flange



ME875S-3F

Note: Standard valves use Nitrile seat material. All models also available with Neoprene (N) or Viton (V). Add delimiter to end of part # prefix to order i.e. ME875SV-24.

OPW ENGINEERING VISI-FLO SIGHT FLOW INDICATORS

Features:

- Cast Bronze Body
- 400 psi Working Pressure
- Low Pressure Drop
- Does NOT Have a Back Check



VISI-FLO VALVE

RMI Part No.	Description	Length
1532-0240	3/4" Sight Flow	4-1/8"
1532-0250	1" Sight Flow	4-1/8"
1532-0260	1-1/4" Sight Flow	5-1/4"
1500RK-0100B	Repair Kit*	3/4" & 1"
1500RK-0200B		1-1/4"

* Includes top and bottom seals, glass, gaskets and instructions

MEC Y-STRAINERS

Features:

- Durable ductile iron body with automotive grade powder coat finish
- Rated 600 PSI / WOG
- Optional factory installed plug*
- Designed for LP-Gas or NH₃

STRAINERS

RMI Part No.			Blow-Off Plug Size	Inlet/Outlet
20 Mesh Screen	40 Mesh Screen	80 Mesh Screen		
ME650S/20	ME650S	ME650S/80	1/2"	1/2" FNPT
ME651S/20	ME651S	ME651S/80	1/2"	3/4" FNPT
ME652S/20	ME652S	ME652S/80	3/4"	1" FNPT
ME653S/20	ME653S	ME653S/80	3/4"	1-1/4" FNPT
-	ME654S	-	1"	1-1/2" FNPT
ME655S/20	ME655S	ME655S/80	1"	2" FNPT
-	ME655S-2F	-	1"	2"-300 LB Flange
-	ME656S	ME656S/80	1-1/4"	3" FNPT
-	ME656S-3F	-	1-1/4"	3"-300 LB Flange
-	ME656S-4F	-	1-1/4"	4"-300 LB Flange

*To add a factory installed plug use a "P" after the prefix number i.e. ME650SP/20



ME656S-3F-901



ME656S-3F

REPLACEMENT SCREENS

Valve Size	RMI Part No.		
	20 Mesh Screen	40 Mesh Screen	80 Mesh Screen
1/2"	ME650-03/20	ME650-03	ME650-03/80
3/4"			
1"	ME652-03/20	ME652-03	ME652-03/80
1-1/4"	ME653-02/20	ME653-02	ME653-02/80
1-1/2"	-	ME654-03	-
2"	ME655-03/20	ME655-03	ME655-03/80
3"	-	ME656-03	ME656-03/80



Excess Flow Valves

EXCESS FLOW VALVES

Excess flow check valves are designed to close upon excessive discharge of liquid or vapor resulting from a break in the piping system. When the flow rate exceeds the valve setting, the valve closes and remains closed until the system pressure equalizes. If the flow does not exceed the setting the valve will not close. Careful consideration should be given to valve selection.



2137 & 2139 SERIES



2723 SERIES



2884D



A3500 SERIES



A8013 SERIES



F100 SERIES

Application/ Service	RMI Part No.		Inlet	Outlet	Liquid GPM Closing Rate
	Brass	Steel			
Portable Service, Hose (Torches, burners, etc.)	F110	-	Male POL	9/16" -18 UNF LH	0.7
	F183	-	Male POL	9/16" -18 UNF LH	1.5
	F173	-	Male POL	1/4" MNPT	0.7
	F181	-	Male POL	1/4" MNPT	1.5
	F110A	-	Soft Nose Male POL	9/16" -18 UNF LH	0.7
	F173A	-	Soft Nose Male POL	1/4" MNPT	0.7
In-Line	F138	-	1/4" MNPT	1/4" FNPT	1.8
	F202	-	Male POL	1/2" SAE Flare	1.9
	ME355EX18	-	Male POL	1/2" SAE Flare	1.8
	ME356EX18	-	Male POL	5/8" SAE Flare	1.8
	ME354EX18	-	Male POL	1/2" MNPT	1.8
	ME880-4/1.8	-	1/4" MNPT	1/4" FNPT	1.8
Tanks & In- Line	F170	-	3/4" MNPT	3/4" FNPT	6.6
	F100	-	3/4" MNPT	3/4" FNPT	8.4
	F101	-	3/4" MNPT	3/4" FNPT	20
	F102	-	1-1/4" MNPT	1-1/4" FNPT	33
	F105	-	1-1/4" MNPT	1-1/4" FNPT	55
	F106	-	2" MNPT	2" FNPT	85
	F107	-	2" MNPT	2" FNPT	100
	ME880-6/4.6	ME880S-6/4.6	3/4" MNPT	3/4" FNPT	4.6
	ME880-6/14	ME880S-6/14	3/4" MNPT	3/4" FNPT	14
	ME880-6/17	ME880S-6/17	3/4" MNPT	3/4" FNPT	17
	ME880-6/22	ME880S-6/22	3/4" MNPT	3/4" FNPT	22
	ME880-6/28	ME880S-6/28	3/4" MNPT	3/4" FNPT	28
	ME880-10/32	ME880S-10/32	1-1/4" MNPT	1-1/4" FNPT	32
	ME880-10/42	ME880S-10/42	1-1/4" MNPT	1-1/4" FNPT	42
	-	A8013D	1-1/4" MNPT	3/4" MNPT	39
	-	A8013DA	1-1/4" MNPT	1" MNPT	44
	-	A8013DB	1-1/4" MNPT	1-1/4" MNPT	55
	-	A8525	1-1/4" MNPT	1-1/4" MNPT	35
	7574	-	1-1/2" MNPT	1-1/2" FNPT	90
	ME880-16/80	ME880S-16/80	2" MNPT	2" FNPT	80
	ME880-16/105	ME880S-16/105	2" MNPT	2" FNPT	105
	ME880-16/114	ME880S-16/114	2" MNPT	2" FNPT	114
	-	ME880S-24/265	3" MNPT	3" FNPT	265
-	ME880S-24/350	3" MNPT	3" FNPT	350	



Non-stock/special order items are not cancellable or returnable

Shop online at www.raymurray.com or call **800-628-5044**

Excess flow check valves are designed to close upon excessive discharge of liquid or vapor resulting from a break in the piping system. When the flow rate exceeds the valve setting, the valve closes and remains closed until the system pressure equalizes. If the flow does not exceed the setting the valve will not close. Careful consideration should be given to valve selection.



F130 & 1519 SERIES

F134 SERIES

F173 SERIES

F190 SERIES

ME350 SERIES

Application/ Service	RMI Part No.		Inlet	Outlet	Liquid GPM Closing Rate
	Brass	Steel			
In-Line	F130	-	1" FNPT	1 FNPT	25
	F131	-	1-1/2" FNPT	1-1/2 FNPT	60
	F132	-	2" FNPT	2 FNPT	95
	F133	-	2" FNPT	2 FNPT	155
	-	A1519A4	2" FNPT	2 FNPT	100
	-	A1519B4	2" FNPT	2" FNPT	133
	1519C4	-	2" FNPT	2" FNPT	170
	-	A1519A6	3" FNPT	3" FNPT	225
	2139	-	3" M X 2" F	3" M X 2" F	125
	2139A	-	3" M X 2" F	3" M X 2" F	160
Tanks	F134	-	1-1/2" MNPT x 1" FNPT	1" FNPT	28
	F135	-	2-1/4" MNPT x 1-1/2" FNPT	1-1/2" FNPT	60
	-	F190	2 MNPT	2" MNPT x 1-1/4 FNPT	80
	-	ME882S-16/80	2" MNPT	2" MNPT	80
	-	F191	2" MNPT	2" MNPT x 1-1/4" FNPT	105
	-	ME882S-16/105	2" MNPT	2" MNPT	105
	-	ME882S-16/114	2" MNPT	2" MNPT	114
	-	A7537P4F	2" MNPT	2" MNPT X 1-1/4" FNPT	150
	-	A2137	2" M X 1-1/4" F	2" M X 1-1/4" F	50
	-	A2137A	2" MNPT X 1-1/4" FNPT	2" MNPT X 1-1/4" FNPT	70
	-	A3500L4	2" MNPT	-	75
	-	A3500N4	2" MNPT	-	125
	-	A3500P4	2" MNPT	-	150
	-	40KI	3" MNPT	2" FNPT	172
	-	F194	3" MNPT	2" MNPT	165
	-	F195	3" MNPT	2" MNPT	260
	-	ME880S-24/265	3" MNPT	3" MNPT	265
	-	ME880S-24/350	3" MNPT	3" MNPT	350
	-	F198	3 MNPT	"3 MNPT X 2 FNPT"	165
	-	ME882S-24/265	3" MNPT	3" MNPT X 2" FNPT	265
	-	F199	3" MNPT	3" MNPT X 2" FNPT	260
	-	ME882S-24/350	3" MNPT	3" MNPT X 2" FNPT	350
	-	A3500R6	3" MNPT	-	150
-	A3500T6	3" MNPT	-	200	
-	A3500V6	3" MNPT	-	250	



Non-stock/special order items are not cancellable or returnable

Shop online at www.raymurray.com or call **800-628-5044**

Relief Valves

THREADED TRUCK RELIEF VALVES

Designed for use with mobile LPG & NH₃ storage containers as a primary pressure relief for bobtail and transport trailer installations.

RMI Part No.	Tank Connection	Relief Setting	LPG	NH ₃	Rain Cap	Installation Wrench	Seal Material
H722-250	2" MNPT	250	YES	YES	P297	P304	Nitrile
H722-265		265	YES	YES			Nitrile
H722-275		275	YES	YES			Nitrile
MEV200FIR/250 ⁴		250	YES	NO ⁴	MEV200FIR-09	MEP200FIR	Nitrile
MEV200FIR/265		265	YES	YES			Nitrile
MEV200FIREP/265 ¹		265	NO	YES			EPR/EPDM
MEV200FIRV/250		250	YES	NO			FKM
MEV200FIRV/265		265	YES	NO			FKM
MEV200FIRK/250 ¹		250	YES	YES			FFKM ³
MEV200FIRK/265 ¹		265	YES	YES			FFKM ³
MEV200FIRNP/250		250	NO	YES			NEOPRENE
MEV200FIRNP/265		265	NO	YES			NEOPRENE
H733-250	3" MNPT	250	YES	YES			P298
H733-265		265	YES	YES	Nitrile		
MEV300FIR/250 ⁴		250	YES	NO ⁴	MEV300FIR-09	MEP300FIR	Nitrile
MEV300FIR/265		265	YES	YES			Nitrile
MEV300FIREP/265 ¹		265	NO	YES			EPR/EPDM
MEV300FIRK/250 ¹		250	YES	YES			FFKM ³
MEV300FIRK/265 ¹		265	YES	YES			FFKM ³
MEV300FIRV/250		250	YES	NO			FKM
MEV300FIRV/265		265	YES	NO			FKM
MEV300FIRNP/250 ¹		250	NO	YES			NEOPRENE
MEV300FIRNP/265 ¹		265	NO	YES			NEOPRENE



H733



MEV200FIR

1 - FFKM, Neoprene and EPR/EPDM not UL Listed

3 - Recommended for LPG and NH₃ Dual service Applications

4 - For NH₃ and "HN" after the prefix for hydrogenated nitrile part number - i.e. MEV200FIRNH/250

FLANGED TRUCK RELIEF VALVES

RMI Part No.	Tank Connection	Relief Setting	LPG	NH ₃	Rain Cap	Seal Material
H733F3-250	3" 300# Flange	250	YES	YES	P298	Nitrile
H733F3-265		265	YES	YES		
MEV300FIR-3F/250		250	YES	NO ⁴	MEV300FIR-09	
MEV300FIR-3F/265		265	YES	YES		
MEV300FIRV-3F/250		250	YES	NO		
MEV300FIRV-3F/265		265	YES	NO		
MEV300FIRK-3F/250		250	YES	YES		FFKM ³
MEV300FIRK-3F/265		265	YES	YES		



H733F3



MEV300FIR-3F

Relief Valves

STORAGE TANK RELIEF VALVES

RMI Part No.	Tank Connection	Relief Setting	Material	LPG	NH ₃	Rain Cap	Pipeaway Adaptor	Seal Material	
H284-225	2" MNPT	225	Brass	YES	NO	AN1011	PI04-24	Nitrile	
H284-250		250	Brass	YES	NO				
H5114-250		250	Stainless	YES	YES				
H5114-265		265	Stainless	YES	YES				
MEV200SIR/125		125	Brass	YES	NO	MEV200SIR-106	MEPI04-24		FKM
MEV200SIR/250		250	Brass	YES	NO				
MEV200SSIR/250		250	Stainless	YES	YES				
MEV200SIR/265		265	Brass	YES	NO				
MEV200SSIR/265		265	Stainless	YES	YES				
MEV200SIRV/125		125	Brass	YES	NO				
MEV200SIRV/250		250	Brass	YES	NO				
MEV200SSIRV/250		250	Stainless	YES	YES				
MEV200SIRV/265		265	Brass	YES	NO				
MEV200SSIRV/265		265	Stainless	YES	YES				
MEV200SIRK/125*		125	Brass	YES	NO				
MEV200SIRK/250*		250	Brass	YES	NO				
MEV200SSIRK/250*		250	Stainless	YES	YES				
MEV200SIRK/265*		265	Brass	YES	NO				
MEV200SSIRK/265*		265	Stainless	YES	YES				



H284



MEV200SSIR

FISHER 63EGLP PILOT OPERATED RELIEF VALVE

The Fisher Type 63EGLP is the evolutionary leap forward in bulk plant pressure relief combining safety, durability, and serviceability into one superior package. Dual pilot technology allows for the removal of a pilot for service while the 63EGLP continues to protect the tank's contents. Greater relief capacity and surface-area protection reduces the number of valves required compared to traditional quadport relief valves.

RMI Part No.	Connection	Discharge Set Pressure PSIG	Replacment Pilot	Listing/ Approval	Flow Rate, SCFM
63EGLP-16-250	2" NPT	250	6358EBLP-250	UL and ASME Sect VIII, Div.1	10,540
63EGLP-250	4" 300# Flange	250	6358EBLP-250	UL and ASME Sect VIII, Div.1	38.794

NUMBER OF VALVES REQUIRED

Tank Size	63EGLP	63EGLP-16	Quadport
30,000 Gal	1	2 or 3	1
45,000 Gal	1	3	2
60,000 Gal	2	4	2
90,000 Gal	2	5	2
120,000 Gal	2	6	3



63EGLP-16



63EGLP



Non-stock/special order items are not cancellable or returnable

Shop online at www.raymurray.com or call 800-628-5044

Relief Valves



MEC ME910P PILOT OPERATED RELIEF VALVE

Designed for use with large LP-Gas and NH₃ stationary storage container applications with 4" - 300# ANSI flanged openings. The pilot valve-controlled relief mechanism allows for precision start to discharge set points in conjunction with the high flow angled seat design for high relief flow capacity in a simplified design which eliminates the need for traditional external pressure relief valves. The dual pilot valve design allows for the change of either pilot valve without taking the storage container out of service, significantly reducing cost of future service and replacement. The relief port is designed with a 4" FNPT threaded outlet, allowing convenient discharge pipeaway if necessary.

RMI Part No.	Flange Size	Discharge Set Pressure PSIG	Replacement Pilots		Listing/ Approval	Required Installation Accessories		Flow Rate, SCFM
			Left	Right		Gasket	Stud/Nut Kit	
ME910P/250-ASME	4" - 300#	250	ME910PK/250-1-ASME	ME910PK/250-2-ASME	ASME Sect VIII, Div.1	ME904S-4F-027	ME904SK	44,278

ACCESSORIES

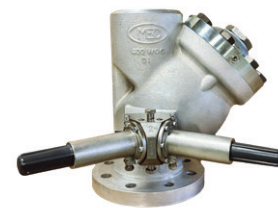
RMI Part No.	Description
MEP910C	Replacement Weather Cap
MEP990-4DFM/3DFM	4" to 3" 300# Flange Reducer



MEP990-4DFM

NUMBER OF VALVES REQUIRED

Tank Size	ME910P	Quadport
30,000 Gal	1	1
45,000 Gal	1	2
60,000 Gal	1	2
90,000 Gal	2	2
120,000 Gal	2	3



ME910P

Note: Relief capacity calculations are based on surface area of tank, which may vary by manufacturer.

MEC QUAD-PORT RELIEF VALVE MANIFOLDS

Features:

- Ductile Iron Body
- All Stainless Steel Internal Components
- Durable Teflon V-Pack Stem Seals
- Large Diameter Port Selection Handle and Port Indicator
- Molded Rubber Weather Guard for Manifold Rotary Gear
- Available with 250 PSIG and 265 PSIG Relief Valve Set Pressures
- Integral Break-Away Feature leaves seal and seat intact
- Supplied with Weep Hole Deflector and Hex Socket Plugs
- 3-1/2" - 8 Outlet Thread accepts 3" MPT Pipeaways

RMI Part No.	Relief Setting	Application		300# Flange Size	Relief Valve		Flow Rating SCFM	Accessory Stud/Nut Kit
		LPG	NH ₃		# of Valves	Valve P/N		
ME903S-3F/250VM	250 PSIG	YES	NO	3"	3	MEV250VM/250	20,400	ME904SK
ME903S-3F/250CN*	250 PSIG	YES	YES	3"	3	MEV250CN/250	20,400	
ME903S-4F/250VM	250 PSIG	YES	NO	4"	3	MEV250VM/250	20,400	
ME903S-4F/250CN*	250 PSIG	YES	YES	4"	3	MEV250CN/250	20,400	
ME904S-3F/250VM	250 PSIG	YES	NO	3"	4	MEV250VM/250	27,740	
ME904S-3F/250CN*	250 PSIG	YES	YES	3"	4	MEV250CN/250	27,740	
ME904S-4F/250VM	250 PSIG	YES	NO	4"	4	MEV250VM/250	27,740	
ME904S-4F/250CN*	250 PSIG	YES	YES	4"	4	MEV250CN/250	27,740	
ME903S-3F/265VM	265 PSIG	YES	NO	3"	3	MEV250VM/265	20,555	
ME903S-3F/265CN*	265 PSIG	YES	YES	3"	3	MEV250CN/265	20,555	
ME903S-4F/265VM	265 PSIG	YES	NO	4"	3	MEV250VM/265	20,555	
ME903S-4F/265CN*	265 PSIG	YES	YES	4"	3	MEV250CN/265	20,555	
ME904S-3F/265VM	265 PSIG	YES	NO	3"	4	MEV250VM/265	28,550	
ME904S-3F/265CN*	265 PSIG	YES	YES	3"	4	MEV250CN/265	28,550	
ME903S-4F/265VM	265 PSIG	YES	NO	4"	4	MEV250VM/265	28,550	
ME903S-4F/265CN*	265 PSIG	YES	YES	4"	4	MEV250CN/265	28,550	



ME904S

*Relief Valve seat material not UL listed

Relief Valves

MEC MINI QUAD-PORT RELIEF VALVE MANIFOLDS

Features:

- Heavy Duty Ductile Iron Body
- All Stainless Steel Internal Components
- Durable Teflon V-Pack Stem Seals
- Large Diameter Port Selection Handle and Port Indicator
- Molded Rubber Weather Guard for Manifold Rotary Gear with Port Plug
- Available with 250 PSIG and 265 PSIG Relief Valve Set Pressures
- Vapor Equalizing Feature for Easy Port to Port Rotation
- Includes Tank Stabilizer Nut for Maximum Strength at Container Connection

RMI Part No.	Relief Setting	Application		Connection	Relief Valve		Flow Rating
		LPG	NH ₃		# of Valves	Valve P/N	
ME902S-16B/250	250 PSIG	YES	NO	2" MNPT	2	MEV125B/250	5,115 (1)
ME902S-16/250	250 PSIG	NO	YES	2" MNPT	2	MEV125/250	5,115 (1)
ME902S-16/265	265 PSIG	NO	YES	2" MNPT	2	MEV125/265	5,855 (1)
ME903S-16B/250	250 PSIG	YES	NO	2" MNPT	3	MEV125B/250	9,320 (2)
ME903S-16/250	250 PSIG	NO	YES	2" MNPT	3	MEV125/250	9,320 (2)
ME903S-16/265	265 PSIG	NO	YES	2" MNPT	3	MEV125/265	10,795 (2)
ME904S-16B/250	250 PSIG	YES	NO	2" MNPT	4	MEV125B/250	12,481 (3)
ME904S-16/250	250 PSIG	NO	YES	2" MNPT	4	MEV125/250	12,481 (3)
ME904S-16/265	265 PSIG	NO	YES	2" MNPT	4	MEV125/265	13,630 (3)

ACCESSORIES

RMI Part No.	Description
MEPI78	Pipeaway Adapter for MEV125 Series
MEPI78K	Pipeaway Adapter Kit for ME904S-16
MEPI23	Installation/Removal Tool for MEV125 Series



ME904S-16



Non-stock/special order items are not cancellable or returnable

Shop online at www.raymurray.com or call 800-628-5044

Relief Valves

HYDROSTATIC RELIEF VALVES

TECH TIP: Relief valves should be replaced based on the recommended service life from the manufacturer. It is recommended that all relief valves be regularly inspected for visible damage, dirt, corrosion, missing rain caps, paint inside outlet, tampering, etc. If any of the preceding is evident or questionable, the valve may need to be replaced immediately.

RMI Part No.	Type	Thread Size	Material	Relief Setting PSIG	Pipeaway Adaptor	Rain Cap
H120-35	Hydrostatic	1/4" MNPT	Brass	35	-	P206
H120-60			Brass	60	-	P206
H120-120			Brass	120	-	P206
H120-150			Brass	150	-	P206
H120-175			Brass	175	-	P206
H120-200			Brass	200	-	P206
H120-225			Brass	225	-	P206
H120-275			Brass	275	-	P206
H120-350			Brass	350	-	P206
H124(1)			Brass	450	-	P206
MEH225			Brass	440	-	P206
MEH225SS/350			Stainless	350	-	MEH501-437
MEH225SS/400			Stainless	400	-	MEH501-437
MEH225SS			Stainless	440	-	MEH501-437
MEH25/450			Brass	450	MEP173	MEH501-812
MEH25K/450			Brass	450	MEP173	MEH501-812
MEH25V/450			Brass	450	MEP173	MEH501-812
MEJ602H			Brass	440	-	-
H144(1)			Brass	450	-	P206
MEH50/460				1/2" MNPT	Brass	460
H174(1)		1/2" MNPT	Brass	450	-	P206
MEH75/460		3/4" MNPT	Brass	460	MEP174	MEH501-1.062
H110-250(1)	ASME	1/4" MNPT	Brass	250	-	P206
H125-250			Brass	250	-	-
H135-250(1)		1/2" MNPT	Brass	250	P174	-
H150-250			Brass	250	-	-
H160-250(1)		3/4" MNPT	Brass	250	-	-
H185-250(1)			Brass	250	-	P145
H185-275(1)			Brass	275	-	-
H110-312(1)			1/4" MNPT	Brass	312	-
H135-312(1)		1/2" MNPT	Brass	312	P174	-
H160-312		3/4" MNPT	Brass	312	-	-



H120.JPG



MEH25-450

1. Listed under UL® Section 132.
2. DOT cylinder water capacity 500 lbs. / 227 kg, approved by Bureau of Explosives and CGA.

Relief Valves

RELIEF VALVE ACCESSORIES

Universal Rain Caps

Fits all standard relief valves. Has new sealed elastomer band with ozone and ultra-violet inhibitors.

UNIVERSAL RELIEF VALVE COVERS

RMI Part No.	Cap ID	Cap Height	Fits
MEH501-437	0.437"	3/8"	MEH225, MEH225SS Series
MEH501-812	0.812"	1"	MEH225/450
MEH501-1.062	1.062"	3/4"	MEH50/460, MEH75/460
MEH501-1.5	1.500"	1"	-
MEH501-1.75	1.750"	1"	-
MEH501-2.25	2.250"	1"	-
MEV250-013*	3.974"	1/2"	MEV250 Series



MEH501

Breakaway Pipeaway Adaptor

Designed to be installed between semi-internal pressure relief valves and vent stacks or at a point in plant plumbing where breakaway protection is needed.

BREAKAWAY PIPEAWAY ADAPTOR

RMI Part No.	Size	Material
MEPI04-24	3" NPT	Steel



MEPI04-24

Anthes Weather Caps

Economical steel cap closes tightly due to high hinge & counter balance. Stainless steel bushing & case hardened bolt protect against rust.

ANTHES WEATHER CAPS

RMI Part No.	Pipe Size
AN11001	3/4"
AN11002	1"
AN11003	1-1/4"
AN11004	1-1/2"
AN11006	2"
AN11007	2-1/2"
AN11011	3"
AN11015	4"

Plastigage Weather Caps

Sturdy aluminum base and tough, durable plastic cover resists corrosion for long life.

PLASTIGAGE WEATHER CAPS

RMI Part No.	Pipe Size
HWC0100	1"
HWC0200	2"
HWC0300	3"
HWC0400	4"



WEATHER CAP