

**Bulk Tank Gauges & Thermometers**



**MEC ACCU-MAX FLOAT GAUGES**

Designed to measure liquid levels in horizontal DOT and stationary ASME tanks. All gauges feature an easy-to-read glow in the dark dial. DOT type features an integral spring-loaded float arm for maximum life in mobile applications.

**NOTE:** Additional custom sizes available - contact RMI customer service for quotes.

RMI Part No.	Type	Dial Size	Tank Diameter
ME930-72	DOT	4"	72"
ME930-79	DOT	4"	79"
ME930-82	DOT	4"	82"
ME930-84	DOT	4"	84"
ME930-86	DOT	4"	86"
ME940-105	ASME	8"	105"
ME940-108	ASME	8"	108"
ME940-114	ASME	8"	114"
ME940-130	ASME	8"	130"

**REPLACEMENT PARTS FOR FLOAT GAUGES**

RMI Part No.	Description
ME930-905	4" Glow Dial
ME930C-905	4" Non-Glow Dial
ME940-905	8" Glow Dial
ME940C-905	8" Non-Glow Dial
ME930-240	4" Dial Glass
ME930-211	4" Dial Seal
ME930-222	4" Dial Mounting Bracket
ME940-210	8" Dial Glass
ME940-211	8" Dial Seal
ME940-206	8" Dial Mounting Bracket
ME930-212	Spiral Gasket
ME930-244	Dial Screw
ME930-243	Dial Nut
ME930-223	Mounting Stud
ME930-224	Mounting Nut



GLOW DIAL



ME930 SERIES

**MOUNTING FLANGES**

RMI Part No.	Description
ME931	2-1/2" MNPT Mounting Flange
ME932	Socket-Weld Mounting Flange
MEP930WG	Mounting Flange Installation Tool

**MEC ACCU-MAX+ DIGITAL DIAL SYSTEM**

Features:

- Tilt compensation for maximum accuracy on all grades
- Estimated gallon tier (liter) display
- Bright easy to read positive LCD display
- 10 selectable LCD backlight color options
- Sealed easy access connection
- Fully programmable with Accu-Max+ configuration kit
- Reverse compatibility to all MEC Accu-Max Series DOT float gauges
- Ability to push display information to PC3 handheld remote



ACCU-MAX+ DIAL

**DIGITAL DIAL OPTIONS**

RMI Part No.	Type	Style	Dial Size	Tank Diameter
ME930DD-905	DOT	Accu-Max+ Digital Dial Only	4"	N/A
ME930DD-72	DOT	Float Gauge w/Accu-Max+ Digital Dial	4"	72"
ME930DD-79	DOT		4"	79"
ME930DD-84	DOT		4"	84"

**ACCESSORIES**

RMI Part No.	Description
ME930DD-PCM	Potted Universal Power Conditioning Module
ME930DD-DH20	Dial Harness w/ 15' Air Pressure Switch Cable, 20'
ME930DD-DH30	Dial Harness w/ 15' Air Pressure Switch Cable, 30'
ME930DD-DH40	Dial Harness w/ 15' Air Pressure Switch Cable, 40'
ME930DD-DH50	Dial Harness w/ 15' Air Pressure Switch Cable, 50'
ME930DD-PH15	15' Vehicle Power Harness w/ 3' Data Connector Cable
ME930DD-PSA1004	Air Pressure Switch Assembly w/ 3/8" Inline Connector Tee
ME930DD-CK	Accu-Max+ Configuration Kit

**Bulk Tank Gauges & Thermometers**

**FISHER ROTARY GAUGES**

The J31 Series can be used on stationary or mobile tanks over 1200 gallons to visually indicate the amount of LP-Gas or anhydrous ammonia (NH<sub>3</sub>) in the container. The gauge is operated by opening the small bleed orifice when the tube is in the vapor space of the tank. Moving the pointer on the dial causes the end of the tube to move until it contacts liquid in the container, at which time discharge from the bleed orifice turns from vapor to liquid giving the volume percentage of liquid in the tank. 1" NPT container connection. Shipped in straight length, can be bent to fit a range of tank sizes.

RMI Part No.	Description / Length (Tank I.D.)
J31L-1	Fisher Rotary Gauge, 68"
J31L-2	Fisher Rotary Gauge, 69"-92"
J31L-3	Fisher Rotary Gauge, 93"-108"
J31L-3L	Fisher Rotary Gauge, 109"-140"
P323	Dial Face
T10971000A2	Cap & Seat Assembly
T1095106562	O-Ring
T1095606162	Packing



J31L SERIES

**ROCHESTER ELIMINATOR**

The Eliminator<sup>®</sup> direct-reading float gauge is a direct replacement for 1" NPT rotary-type gauges in LP and NH<sub>3</sub> storage tanks. These gauges are designed for larger tanks up to 84" in diameter. The Eliminator<sup>®</sup> is not intended for use in filling tanks - its use is restricted to tanks with fixed liquid level gauges, used to determine when the maximum fill level has been reached. The eliminator can be used in mobile applications up to 72".

RMI Part No.	Description
6293-R8400*	4" Dial Face, End Mount for 1" FNPT

\* Must specify tank diameter when ordering



6293 SERIES

**COMBINATION VALVES**

Designed for installation on bulk storage containers, the valve combines a pressure gauge and a liquid level gauge.

RMI Part No.	Container Connection	Material	Vent Valve	Gauge
ME830	3/4"	Ductile	Yes	No
MEJ415	3/4"	Steel	No	No
MEJ415G	3/4"	Steel	Yes	Yes
J415	3/4"	Steel	No	No
J415-1	3/4"	Steel	Yes	Yes



J415



MEJ415G

**THERMOMETERS**

RMI Part No.	Dial Diameter	Probe Length	Connection
MEJ700	2"	4"	1/2" NPT
MEJ701	2"	6"	
MEJ702	3"	4"	
MEJ703	3"	6"	
J700	2"	4"	
J701	2"	6"	
T-Well	Thermometer Well		



J700

**TANK CAR THERMOMETER**

-30° to +120° Range, 12" Long. Chain not included. Organic liquid filled.

RMI Part No.	Description
T-10B	Thermometer Only
T-10C	Thermometer with Steel Armor



T-10C



**Flex Connectors**

**STAINLESS STEEL FLEXIBLE CONNECTORS**

Double braided, stainless steel for liquid propane. Prevents piping damage from vibration, thermal expansion, and misalignment not exceeding 3/4" offset. 350 PSI working pressure.

**CONNECTORS W/ UNIONS**

RMI Part No.	Size	Length
FLEX 1-12-U	1"	12"
FLEX 1-1/4-14-U	1-1/4"	14"
FLEX 2-18-U	2"	18"
FLEX 3-18-U	3"	18"



UNION END

**THREADED CONNECTORS**

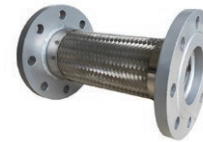
RMI Part No.	Size	Length
FLEX 1/2-12	1/2"	12"
FLEX 3/4-12	3/4"	12"
FLEX 1-12	1"	12"
FLEX 1-1/4-14	1-1/4"	14"
FLEX 1-1/2-18	1-1/2"	18"
FLEX 2-18	2"	18"
FLEX 3-24	2"	24"
FLEX 3-18	3"	18"
FLEX 3-24	3"	24"



THREADED

**CONNECTORS W/ 300# FLANGES**

RMI Part No.	Size	Length
FLEX 1-1/4F-12	1-1/4"	12"
FLEX 1-1/4F-18	1-1/4"	18"
FLEX 2F-12	2"	12"
FLEX 2F-18	2"	18"
FLEX 3F-18	3"	18"
FLEX 3F-24	3"	24"
FLEX 4F-12	4"	12"
FLEX 4F-18	4"	18"



FLANGED

**FLEXIBLE HOSE CONNECTORS**

RMI will fabricate to order flex connectors with crimped male pipe thread ends and pressure test to D.O.T. specifications. Just order the hose kit you need and specify O.A.L.

RMI Part No.		Hose & Thread	Minimum Length
SS Braided Hose	STD. LPG Hose		
-	3/4 HOSEKIT-TESTED	3/4"	7-1/4"
-	1 HOSEKIT-TESTED	1"	8-1/4"
1-1/4 HOSEKIT-SB-TESTED	1-1/4 HOSEKIT-TESTED	1-1/4"	9-1/2"
1-1/2 HOSEKIT-SB-TESTED	1-1/2 HOSEKIT-TESTED	1-1/2"	10"
2 HOSEKIT-SB-TESTED	2 HOSEKIT-TESTED	2"	12"

