

MEC Smart Interlock Systems

SMART INTERLOCK TECHNOLOGY

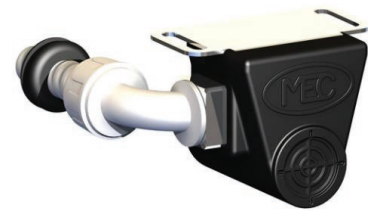
Designed to prevent a vehicle from being operated while the hose end delivery valve, loading line, or wheel chocks are in use. The smart interlock technology connects directly to the vehicle's transmission or braking system to restrict movement.

SMART INTERLOCK TECHNOLOGY

RMI Part No.	Description	Temp Range	Accessories
ME200PIB	Sensor Bracket Assy for ME200	-20° to 160°F	ME200EXT (Standoff Ext Kit)
ME200PIBK	Sensor Bracket Assy w/ ME200	-20° to 160°F	
ME217PIB	Sensor Bracket Assy for ME217 Series	-20° to 160°F	
ME503PIB	Sensor Bracket Assy for ME503-16 & ME252-16	-20° to 160°F	
ME807PIB	Sensor Bracket Assy for ME807 Series	-20° to 160°F	
ME808PIB	Sensor Bracket Assy for ME808 Series	-20° to 160°F	
ME868PIB	Sensor Bracket Assy for ME868 Series	-20° to 160°F	MEP801PC/20 (20' Prox Cable)
MEP801PIH	Sensor Assy w/ MEP801 Valve Holster	-20° to 160°F	
MEP802PIH	Valve Holster w/ Prox Sensor & Weather Hood	-20° to 160°F	MEP801PC/30 (30' Prox Cable)
MEP804PIH	Quick-Jaw Valve Holster w/ Prox Sensor	-20° to 160°F	
MEP801PIK	Interlock Retrofit Kit for MEP801 Valve Holster	-20° to 160°F	
MEP801PIKL	Low Temp Interlock Retrofit Kit for MEP801	-50° to 160°F	
ME890PIB	Universal Sensor Bracket Assy for Enclosures	-20° to 160°F	



ME200PIBK



ME890PIB

SMART INTERLOCK WIRING HARNESS KITS

RMI Part No.	# of Relays	Cable Length
MEP801PCK/20	1	20'
MEP801PCK/30	1	30'
MEP802PCK/20	2	20'
MEP802PCK/30	2	30'
MEP803PCK/30	3	30'



MEP801PIK

*Additional cables required for 802 and 803 series kits

Propane Technologies Remote Shutoff System

- Easy to use & install
- Transmitter operates up to 300ft from Bobtail
- 2nd channel allows for operation of throttle, hose reel control, or query feature



3300-FGL

BREAKGUARD PASSIVE SHUTOFF SYSTEM

- Easy to use & install
- Meets DOT requirements
- Automatically shuts off the flow of gas without human intervention
- Off truck remote can close internal valve during unloading process
- Works with any hose, even where a facility hose is utilized

BOBTAILS

RMI Part No.	Description
3300-FGL	Remote Shutoff for Rego Flowmatic
3300-FTGL	Shutoff for Flomatic w/ 2 Transmitters
3300-FGLB	Remote Shutoff for Pneumatic Internal Transmitters

REPLACEMENT PARTS & ACCESSORIES

RMI Part No.	Description
VAP327G	Replacement Transmitter
K02-004	Solenoid Valve w/ Bracket
VAP338BR	2nd Channel Relay Kit

BREAKGUARD PASSIVE SHUTOFF SYSTEM

RMI Part No.	Description
3300-PA	Breakguard Passive Shutoff System
3300-PA-VELCRO	Replacement Velcro

BASE Engineering Shut-Off Systems



BASE ENGINEERING BOBTAIL REMOTE SHUTOFF SYSTEMS

- US DOT and Transport Canada Compliant
- Compact polycarbonate receiver units are easily installed using pre-wired electrical harness
- Max operating range of 1000ft
- Runs for 300 hours of continuous operation and warns you when batteries are low
- Uses state of the art encryption technology to ensure an interference free, fail-safe signal
- Lightning fast response time - everything stops so you stay safe
- Receivers are energized only during operation and have built-in fail-safe feature, activating E-Stop with any loss of receiver power



MULTI-FUNCTION RECIEVER



SINGLE FUNCTION RECIEVER

RMI Part No.	Description
ASKWD100F	1 Function System for Rego Flowmatic
ASKWD100A	1 Function System for Pneumatic Internal Valve
ASKWD200F	2 Function System for Rego Flowmatic
ASKWD200A	2 Function System for Pneumatic Internal Valve
Replacement Transmitters	
ASKW100TX	1 Function Transmitter
ASKW200TX	2 Function Transmitter
Accessories	
IT-POUCH	Protective Window Pouch

DRIVER AUTHORIZATION SYSTEMS

Driver authorization systems are designed for commercial vehicles and prevent unauthorized engine start or movement.

System Includes:

- Keypad Unit with hidden enclosure screws
- Sealed parking brake low pressure switch with DOT quick-connect T fitting
- Sealed Engine kill relay
- Complete wiring harness

RMI Part No.	Description
DAS1000-AB	Security System for vehicle with air switch
DAS1000-AT	Security System for vehicle with automatic transmission
DAS1000-IG	Security System for any vehicle



DAS1000

TRANSPORT LEAK DETECTION SYSTEM

Leak detection systems to be used on transports to comply with DOT requirements for passive shut off. The system continually monitors the off-loading procedures for a rapid change in discharge pressure.

RMI Part No.	Description
LDS60	Transport Leak Detection System
LDS100	System w/ Engine Shutdown
LDS200-AQRF	System w/ Query Function



LDS60



LDS200AQRF

BULK PLANT WIRELESS SHUTDOWN SYSTEM

Bulk plant wireless emergency shutdown allows for the addition of additional shutdown locations without the need to run additional pneumatic tubing. System can be ordered with solenoid factory installed in receiver.

RMI Part No.	Description
ASKFAX200-AC	Battery Operated wireless emergency bulk plant shutdown



ASKFAX200-AC



HANDHELD E-STOP



Non-stock/special order items are not cancellable or returnable

Shop online at www.raymurray.com or call 800-628-5044