

**Neptune Meters & Registers**



**FILL STATION METERS**

- 1" Size with 3/4" FNPT flanges
- Aluminum design - 40% lighter than ductile iron meters
- Available with ATC temperature control
- Smooth performance at low flow and high operating pressures

RMI Part No.	Inlet / Outlet	Capacity	ATC	Register	Weight (Lbs.)
400051-001	3/4"	3-18 gpm	No	631 Non Print	24
400051-002	3/4"	3-18 gpm	Yes	631 Non Print	29
400051-801	3/4"	3-18 gpm	No	833 Print	41



400051 SERIES

**DISPENSER METERS WITH ELECTRONIC REGISTERS**

RMI Part No.	Inlet / Outlet	Register	ATC
RL100-208AMMBS	3/4"	E1000	No
RL100-10MOMMFSSO	3/4"	MIDCOM LT	No
RL100-10MOMMESO	3/4"	MIDCOM LT	Yes

**BULK PLANT & TRUCK METERS**

Neptune 1-1/2" and 2" liquid meter for bulk plants and trucks. Standard meter comes with ticket print register and ATC - Temperature compensating unit. The 2" Type 4D MT meter for Liquefied Propane Gas features a flanged outlet with ductile iron companion flange for easy installation and removal.

**1-1/2" LIQUID METER TYPE 4D**

RMI Part No.	Inlet / Outlet	Capacity	ATC	Register	Weight (Lbs.)
RL150-21RG0DIM5	1-1/2"	12-60 GPM	Yes	Print	133 Lbs.

**2" LIQUID METER TYPE 4D**

RMI Part No.	Inlet / Outlet	Capacity	ATC	Register	Weight (Lbs.)
400069-101	2"	20-100 GPM	Yes	Print	137 Lbs.



400069 SERIES

**REGISTERS**

RMI Part No.	Model	Size	Meter Register Type
880010-000	831	1-1/4", 1-1/2", 2"	Direct Read
880030-000	833	1", 1-1/4", 1-1/2", 2"	Ticket Printing
100498-009*	631	3/4"	Code AEAAD
100498-016	631	1"	Code AAAAD
100553-201	631		Mask

\* Old style long shaft



600 SERIES



E4000



800 SERIES

**Neptune Meters & Registers**



**FACTORY AUTHORIZED PUMP AND WARRANTY METER REPAIR SERVICE**

*Blackmer/Neptune/Corken/Liquid Controls*

**Register Repair Service**

**Repair:** Expert repair of your old register with an average turn-around time of 4 days. Temperature compensators repaired and updated. Calibration after repair must be handled by the customer.

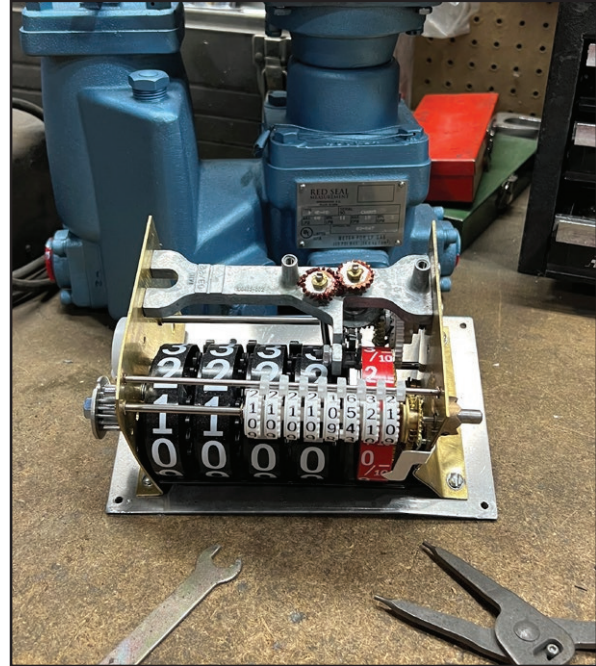
**Neptune Register Exchange Program:** Receive a rebuilt register – return the old register. Pay a standard exchange fee only. Upon placing an order for a rebuilt register, RMI will invoice for parts below:

RMI Part No.	Description
833EX	Neptune Register Exchange
833CORE	Register Core – returned by customer

When the customer register is returned, the account will be credited for RMI part # 833CORE.

*Note: Customer is responsible for shipping costs in & out.*

**Parts:** Full stock of parts for the repair of pumps, meters, registers, compressors, and valves (Blackmer/Neptune/Corken/Liquid Controls/MEC/Fisher)

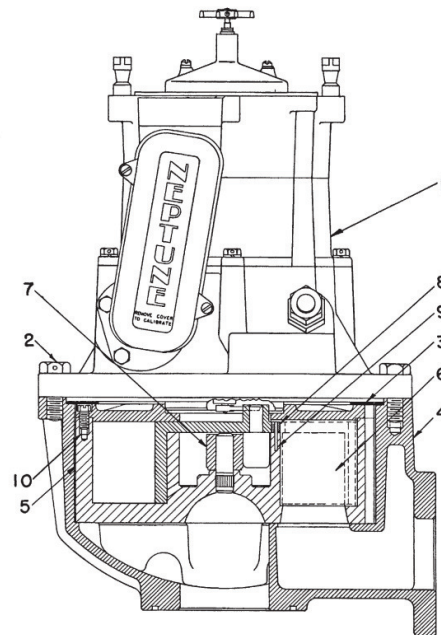


**PARTS BREAKDOWN**

**FLOWMETER WITH TEMPERATURE COMPENSATOR - TYPES 4-MT & 4D-MT**

Key	Part Description	RMI Part No.		
		1-1/4"	1-1/2"	2"
1	LP-Gas Temperature Compensator	See Note		
2	Cap Screw, Main case	795-003	795-003	795-003
	Cap Screw, Main Case (with seal hole)	795-011	795-011	795-011
2A	Lockwasher, 7/16 Bolt (not shown)	41012-002	41012-002	-
3	Gasket	4862-008	4862-008	84806-000
4	Main Casing with Locating Pin	83477-701	84978-702	400072-701
5	Measuring Chamber Complete	C43260-101	C83271-101	45806-101
6	Diaphragm	43271-000	83277-000	42312-001
7	Roller, Control	43275-000	43275-000	42316-001
8	Pin Seal	42792-000	42792-000	42546-000
9	Dowel Stud Seal Pin	-	-	5411-001
10	Screw Measuring Chamber	-	-	88638-000

*Note: Please see page 200 for Temperature Compensator Diagram*



### Neptune Meters & Registers

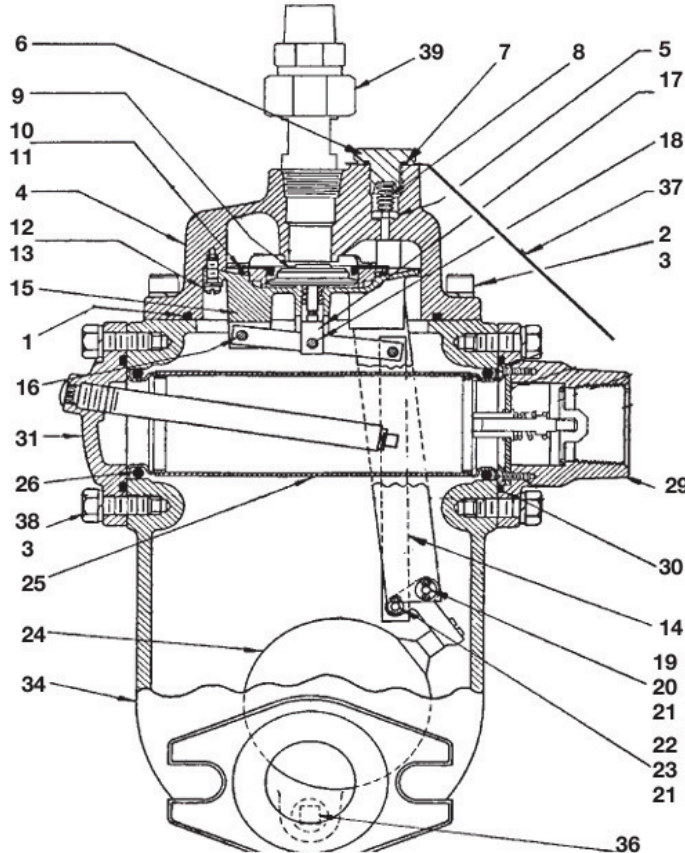


#### VAPOR RELEASE AND STRAINER

Key	Part Description	RMI Part No.	
		1-1/4" & 1-1/2"	2"
1	Gasket O-Ring	100139-022	100139-022
2	Screw, 3/8-16 x 1, Socket Hd.	008325-014	008325-014
3	Lockwasher, 3/8 Steel	045828-001	041012-002
	Mounting Cover with Float	083481-701	-
4	Cover Assembly Vapor Release	400077-701	400077-701
5	Valve Assembly Bypass	100237-001	100237-001
6	Screw and Plate Assembly	100333-001	004853-008
7	O-Ring, 1/16 sect x 11/16 ID	100138-006	100138-006
8	Spring Compression	100024-003	100024-003
9	Main Valve Complete	89274-006	89274-006
10	Sleeve, Valve	082446-005	082446-005
11	Piston, Seal	83179-000	83179-000
12	Lockwasher, No. 10 steel	041211-000	041211-000
13	Screw, 10-32 x 5/8 fil hd steel	041221-002	041221-002
	Lower Valve Housing Complete	086797-001	083457-000
14	Link Assembly	100334-001	080002-002
15	Valve Housing with Extensions	082455-000	-
16	Rivet, valve Lever	040819-002	040819-002
17	Stem, Valve	083127-001	083127-001
18	Pin, Valve Stem	042941-000	042941-000
19	Pin, Float Lever (Long)	040820-003	040820-003

Key	Part Description	RMI Part No.	
		1-1/4" & 1-1/2"	2"
20	Washer, Float Lever Pin (Long)	040491-000	040491-000
21	Cotter Pin, 1/16 dia. X 1/2, Brass	041402-000	041402-000
22	Pin, Float Lever (Short)	082633-000	082633-000
23	Washer, Float Lever Pin (Short)	041989-000	041989-000
24	Float Complete	82476-001	82476-001
25	Strainer and Gasket Assembly (80-mesh)	101433-704	101405-004
26	Gasket, O-Ring	100139-032	100139-038
29	Inlet Check Valve Complete (soft seat)*	84983-704	84813-702
30	Gasket, O-Ring	100139-010	100139-018
31	Strainer Cover (with thermometer well)	083485-702	400078-001
	Strainer Cover (without thermometer well)	083486-705	-
33	Cap Screw, 7/16-14 x 1-3/8, Hex Hd Steel	-	000795-003
34	Body, Vapor Release and Strainer	083495-701	400086-701
35	Lockwasher, 7/16 Steel	-	041012-002
36	Plug, Drain	100075-003	-
37	Caution Tag	100322-001	100322-001
38	Cap Screw, 3/8-16 x 1, Hex Hd Steel (without seal hole)	100067-053	-
	(with seal hole)	100068-027	-
39	Valve, Vapor Return Check (straight type)	84828-000	84828-000

\*See page 200 for soft seat parts list



Non-stock/special order items are not cancellable or returnable

Shop online at [www.raymurray.com](http://www.raymurray.com) or call 800-628-5044

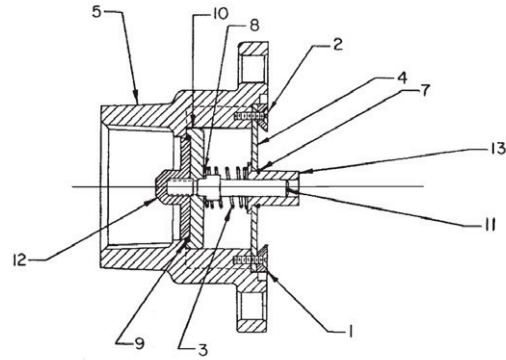
### Neptune Meters & Registers



### PARTS BREAKDOWN

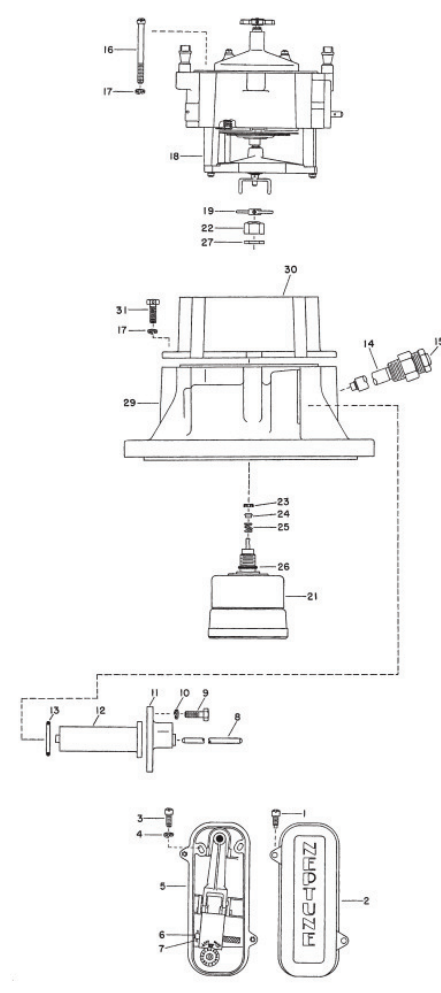
#### SOFT SEAT INLET CHECK VALVE

Key	Part Description	RMI Part No.	
		1-1/4" & 1-1/2"	2"
1	Ring Retaining	83441-000	84817-000
2	Screw	83442-000	-
3	Spring	83492-000	83492-000
4	Strap, Inlet Check	83493-003	84816-001
5	Inlet Flange	84984-005	84814-003
7	Ring, Retaining, Truarc	86071-000	86071-000
8	Washer Lock	041117-000	041117-000
9	"O" Ring	100146-003	100139-032
10	Holder, Disk	100423-002	100374-002
11	Shaft, Inlet Check	100896-001	100896-001
12	Retainer, Disk	100897-001	100898-001
13	Bearing	100899-001	100899-001



#### TEMPERATURE COMPENSATOR, TYPE 1 STYLE 2

Key	Part Description	RMI Part No.		
		1-1/4"	1-1/2"	2"
1	Screw, Cover (10-32 special)	9287-003	9287-003	9287-003
2	Cover, Mounting Plate and Lever Arm Assy.	86665-000	86665-000	86665-000
3	Screw, 10 - 32X 5/8, fill hd steel	41221-002	41221-002	41221-002
4	Lockwasher, No. 10 Steel	41211-000	41211-000	41211-000
5	Mounting Plate & Lever Arm Assy. (4D-MT)	86649-003	86649-003	86649-003
	Mounting Plate & Lever Arm Assy.(4-MT)	-	-	87650-001
6	Pin, Lever Arm Lock	86661-001	86661-001	86661-001
7	Cotter Pin, 1/16" dia. X 3/8" Brass	86973-000	86973-000	86973-000
8	Pin, Thermostat	86648-000	86648-000	86648-000
9	Screw, 1/4" dia. X 3/8" Brass	83784-000	83784-000	83784-000
10	Lockwasher, 1/4" steel	41117-000	41117-000	88721-000
11	Cover, Thermostat	86647-001	86647-001	400010-701
12	Thermostat (Bellows)	86646-000	86646-000	86646-000
13	Gasket, O-Ring, Thermostat Cover	100139-005	100139-005	100139-005
14	Thermometer Well Complete	1001906	1001906	1001906
15	Cover, Thermometer Well	600443-001	600443-001	600443-001
16	Screw, 1/4-20 X 2-1/2, fil hd steel	8302-107	8302-107	8302-107
17	Lockwasher, 1/4" steel small	88721-000	88721-000	88721-000
18	Adaptor Unit Complete	86602-705	86602-705	86602-705
19	Driving Arm with Setscrew	82976-001	82976-001	82976-001
21	Gear Train Complete			
	3.75 Reduction US Gal	-	-	83502-000
	9.93 Reduction Liters	-	-	80862-055
	9.375 reduction US Gal	-	84981-000	-
	11.6 Reduction IMP Gal	-	083280-51	-
	14.06 Reduction US Gal	83501-000	-	-
	25.4181 Reduction Liters	-	083280-052	-
	36.41 Reduction Liters	82710-54	-	-
22	Nut and Bushing Assembly, Stuffing Box	83536-000	83536-000	83536-000
23	Seal U-Cup Shaft	100025-002	100025-002	100025-002
24	Expander, Seal	83539-000	83539-000	83539-000
25	Spring, Stuffing Box	83540-000	83540-000	83540-000
26	Gasket, O-Ring	100138-003	100138-003	100138-003
27	Nut, Clamp	34-000	34-000	34-000
28	Housing, Compensator	86601-701	86601-701	-
29	Main Case Cover with Locking Pin	400081-002	400081-002	400081-002
30	Spacer	-	-	1002043
31	Screw, 1/4-20 x 1-1/8 Socket Hex Hd steel	-	-	1002044

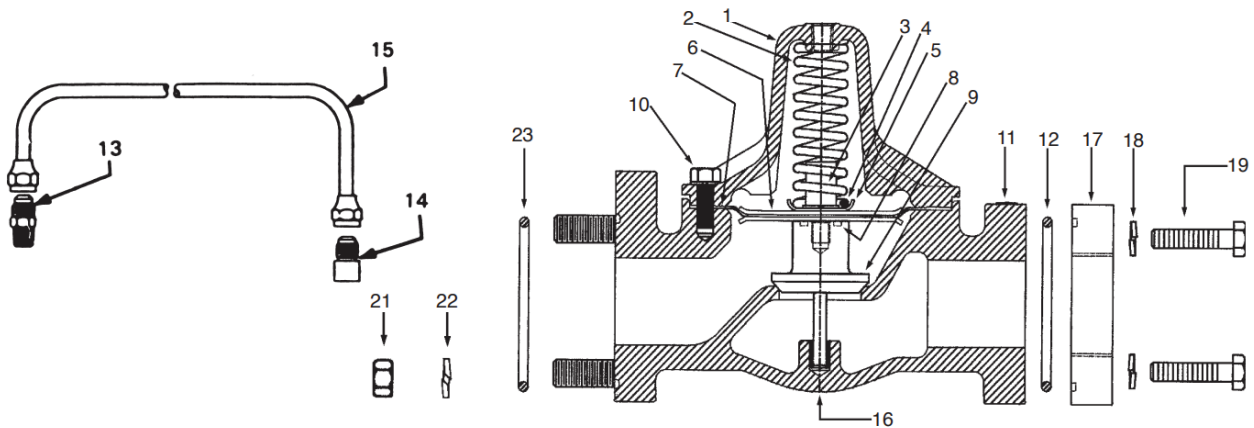


**Neptune Meters & Registers**



**DIFFERENTIAL VALVE**

Key	Part Description	RMI Part No.	
		1-1/4" & 1-1/2"	2"
1	Cover	400000-001	400000-001
2	Spring Valve	083775-000	083775-000
	Diaphragm Complete	1001569	1001569
3	Screw, Diaphragm	083774-002	083774-002
4	Lockwasher, 7/16 steel	041012-002	041012-002
5	Retainer Spring	083773-000	083773-000
6	Retainer Diaphragm	083772-002	083772-002
7	Diaphragm	1000624	1000624
8	Gasket, O-Ring	100139-001	100139-001
9	Valve Stem Assembled	083927-002	083927-002
10	Screw, 3/8 - 16 x 1-1/4, hex hd steel	100067-051	100067-0512
	Screw, 3/8 - 16 x 1-1/4, hex hd steel (with seal hole)	100068-050	100068-050
10A	Lockwasher, 3/8 steel (not shown)	045828-001	045828-001
11	Body, stud	1931-000	1931-000
12	Gasket, O-Ring 1/8 x 3-3/4	100139-018	100139-018
13	Fitting, Straight, 3/8 flared tube (male half)	084826-000	084826-000
14	Fitting, Elbow, 3/8 flared tube (male half)	084825-001	084825-001
15	Tube, Connecting with Nuts	084823-000	084823-000
	Tube, Connecting with Nuts ( Angle Configuration)	084821-000	084821-000
16	Bushing	008343-001	008343-001
17	Flange, 2" NPT	086814-001	086814-001
	Flange, 1-1/2" NPT	086814-002	086814-002
18	Lockwasher	41012-002	41012-002
19	Screw	100071-101	100071-101
20	Vent line Check Valve (not shown)	84828-000	84828-000
21	Nut 5/8-11	041224-000	041224-000
22	Lockwasher	041395-000	041395-000
23	Gasket, O-Ring	100139-013	100139-013



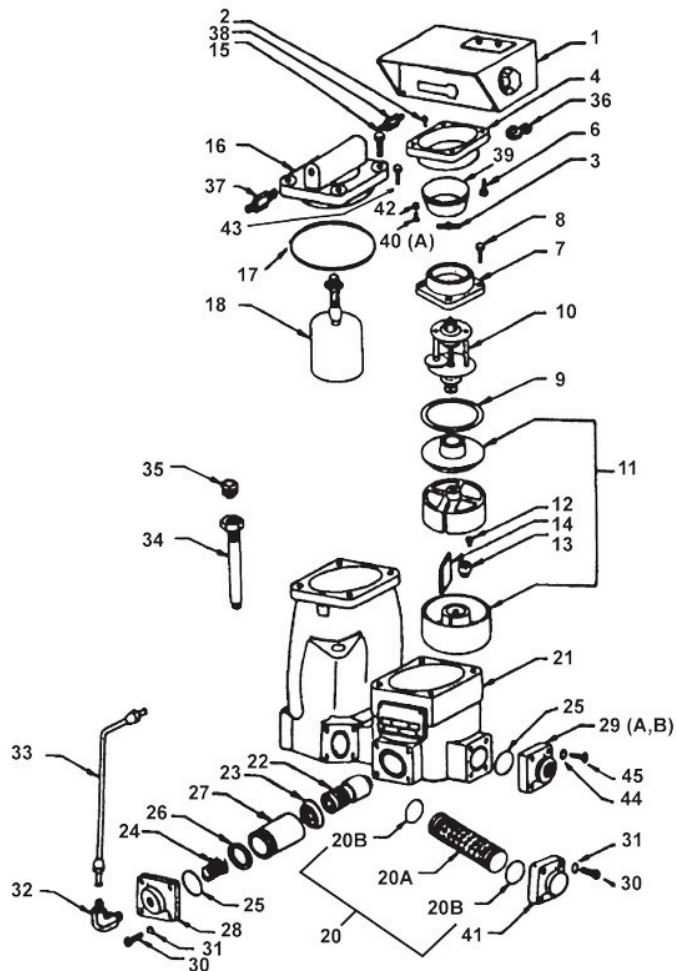
### Neptune Meters & Registers

### 3/4" - 1" 4D & 4D-MD DIAGRAM



Key	Part Description	RMI Part No.
1	Register Complete, 600 Series, Gallon ATC	100498-018
	Register Complete, 600 Series, Gallon Non-ATC	100498-016
2	Screw, 10-32 x 3/8 Fil Hd	000733-001
3	Star Conn with set screw	82976-001
4	Adaptor, 600 Series Register	100729-001
6	Bolt, 1/4-28 x 1/2 hex hd	
	drilled	100062-023
	undrilled	100061-023
7	Main Case Cover Assembly	400024-701
8	Cap Screw, 7/16-14 x 1-3/16	
	drilled	040237-005
	undrilled	040237-004
9	Gasket Main Case, Viton	601522-001
10	Gear Train Complete	
	116.87 reduction (600; 10 liter)	080905-013
	43.5 reduction ( 600; US gallons) - Large Spindle	08095-017
11	Measuring Chamber Complete with Piston	101748-001
12	Pin, Seal	042792-000
13	Roller, Control	042086-000
14	Diaphragm	42791-000
15	Cap Screw, 3/8-016 x 1 hex hd	
	drilled	100071-025
	undrilled	100071-024
16	Cover, Vapor Release (See Note 1)	400021-701
17	Gasket, O-Ring	100139-012
18	Vapor Release Float Assembly (See Note 1)	87188-001
20	Strainer Kit, 80 Mesh	101752-701
20A	Strainer, 14 x 80 Mesh	101738-001
20B	O-Ring, 1/8 x 1" Buna	100139-041
21	Main Case Assembly	400027-701
	Pin, Measuring Chamber Locating Kit, Valve	100370-022 100028-001
22	Piston, Differential Valve	100160-005
22B	O-Ring ( Not Shown, See Note 2 )	100139-044
23	U Cup Valve	100025-009YY
24	Spring	100024-001
25	O-Ring, Cover	100139-007
26	O-Ring, Sleeve Sealing	100139-006
27	Sleeve, Valve	100127-003
28	Cover, Differential Valve	400020-702
29A	Flange, Inlet or Outlet, 3/4" NPT	600057-000Y
28B	Flange, Inlet or Outlet, 1" NPT	600057-001
30	Screw, 5/16 18 x 7/8 hex hd steel	
	drilled	008325-046
31	Lockwasher, 5/16	041482-000
-	Tubing Kit, Vapor Release	100017-011

Key	Part Description	RMI Part No.
32	Elbow, Male 1/4-90° (Flared Tube Fitting)	087195-001
33	Tube Assy, Vapor Release	87196-001
34	Thermometer Well	1001906Y
35	Cover, Thermometer Well	600443-001YY
36	Change Gears ( give dia. and number of teeth)	See Note 3
37	Connector, Male 1/4 ( flared tube fitting)	100135-002
38	Connector, Male 3/8 Flared	084826-000
39	Register Cup	000138-031
40	Screw, 1/4-20 Hex Hd	100059-024
41	Strainer Cover Assy	400025-701
42	Sleeve, Screw	100737-001
43	Screw, 10-32 x 3/8 Fil Hd	000733-001
44	Lockwasher, 5/16 Hi Collar	041482-000
45	Screw 5/16 -18 x 1 Hex. Soc Head	008325-044



Note 1: Index numbers 16 & 18 can be purchased as one item under cover assembly part number 400026-701

Note 2: Item number 22B goes in new O-Ring groove in part number 601342-001 in meters shipped after March 2013

Note 3: Ref Form TSG-310 (I)

## Liquid Controls



### LIQUID CONTROLS MA & MSA SERIES METERS

Liquid Controls positive displacement MA and MSA series class 10 and class 12 meters are the industry standard for safe and accurate transfer of LPG and NH<sub>3</sub> gases and liquids.

MA4, MA5, and MA7 meters are designed for LP gas and NH<sub>3</sub> truck and bulk loading applications. MA15 and MSA30 meters have larger capacities and are designed for bulk plant metering. All meters are custom built to your specifications – please use the nomenclature guide below to size and select your desired unit.

**TECH TIP:** RMI's technical service team is available to assist with sizing and selecting meters for your desired application. Please call us at 800-628-5044 for assistance!

Product Series	Flange Size (In)	Min Flow (GPM)	Max Flow (GPM)	Max Pressure (PSI)
MA4	1	5	30	350
MA5	1-1/2	12	60	350
MA7	2	20	100	350
MA15	3	20	100	350
MSA30	3	35	350	300

EXAMPLE PART # **M A 7 K Y 10 - LCR.IQ-I**

Meter	Case	Pressure	Size (GPM)	Accessory Combination	Additional Accessories	Class	Registration
<b>M</b>		<b>A</b>	<b>7</b>	<b>K</b>	<b>T</b>	<b>10</b>	<b>LCR.IQ-I</b>
<b>M</b> = Meter	<b>Blank</b> = Non-Steel	<b>A</b> = 350PSI (MA) or 300PSI (MSA)	<b>5</b> = 60 GPM	<b>A</b> = Meter + Register	<b>Blank</b> = No Accessory	<b>10</b> = LPG	<b>MECH-NP</b> = Mechanical w/o Pulser
	<b>S</b> = Steel		<b>7</b> = 100 GPM	<b>C</b> = Meter + Register + Strainer + Air Eliminator			<b>T</b> = Temp Compensator
			<b>15</b> = 200 GPM	<b>G</b> = Meter + Register + Strainer + Air Eliminator + Printer	<b>X</b> = Differential Valve	<b>Y</b> = Differential Valve + Temp Compensator	<b>LR</b> = Less Mechanical Register
			<b>30</b> = 350 GPM	<b>K</b> = Meter + Register + Strainer + Air Eliminator + Preset Valve			<b>LRG</b> = Less Mechanical Register & Gear Plate
				<b>P</b> = Meter Only (No Register or Gear Plate)			<b>POD</b> = Pulse Output Device
			<b>S</b> = Meter Only POD (No Register)	<b>LCR.IQ-I</b> = LCR.IQ w/ Internal Pulser			
					<b>LCR.IQ-E</b> = LCR.IQ w/ External Pulser (POD)		
					<b>LCR2-I</b> = LCR-II w/ Internal Pulser		
					<b>LCR2-E</b> = LCR-II w/ External Pulser (POD)		



MA4 W LCR IQ



MA5 W LCR II



MA7 W LCR IQ



MA15 W LCR IQ



MSA30 WO REGISTER



Non-stock/special order items are not cancellable or returnable

Shop online at [www.raymurray.com](http://www.raymurray.com) or call 800-628-5044

### Liquid Controls



### REGISTERS

RMI Part No.	Description
D3311	Print Counter
D1111	Non-Print Counter
LCR2-I-GN	Digital Print Counter
LCR.IQ-I	Digital Print Counter



D1111



D3311



LCR-II



LCR-IQ

### FLANGES, ADAPTOR KITS, & ACCESSORIES

RMI Part No.	Description	Material/Seal/Connection
<b>1" Flange - MA4</b>		
501529	Flange Assy, MA4	Steel/Buna/1"NPT
A2141	Flange Assy, MA5 & MA7	Steel/Buna - 1.5 NPT
A2144	Flange Assy, MA5 & MA7	Steel/Buna - 1.5 BSPT
A2178	Flange Assy, MA5 & MA7	Stainless Steel/Buna - 1-1/2" Weld
<b>2" Flanges - MA5, MA7, &amp; MA15</b>		
A2241	Flange Assy, MA5 & MA7	Steel/Buna-2"NPT
A2262	Flange Assy, MA5 & MA7	Steel/Buna-2"BSPT
A2289	Flange Assy, MA5 & MA7	Steel/Buna-2" Weld
A2252	Flange Assy, MA5 & MA7	Stainless Steel/Buna-2" Weld
<b>3" Flanges - MA15</b>		
A3221	Flange Assy. MA15	Steel/Buna-3" NPT
A3242	Flange Assy. MA15	Steel/Buna-3" BSPT
A3281	Flange Assy. MA15	Steel/Buna-3" Weld
<b>3" x 2" Adaptor Kit - MA15</b>		
A3245*	Flange Adapter, MA15 3"x2"	Meter HSG To Diff Valve
<b>3" Flanged Strainer / Vapor Eliminator Kit - MSA30</b>		
A3375-B	Strainer / Vapor Eliminator	100 Mesh w/ Ltd Bleed Tee, Buna
<b>3" Flanged Differential Valve - MSA30</b>		
511-SERIES	Cast Steel Differential Valve	300#, Buna, SS Pilot & Fittings
D3311	Print Counter	Print Counter
D3311	Print Counter	Print Counter
D3311	Print Counter	Print Counter



## Liquid Controls

### PARTS BREAKDOWN - CLASS 10 MA4, MA5, MA7, & MA15 METERS FOR LPG



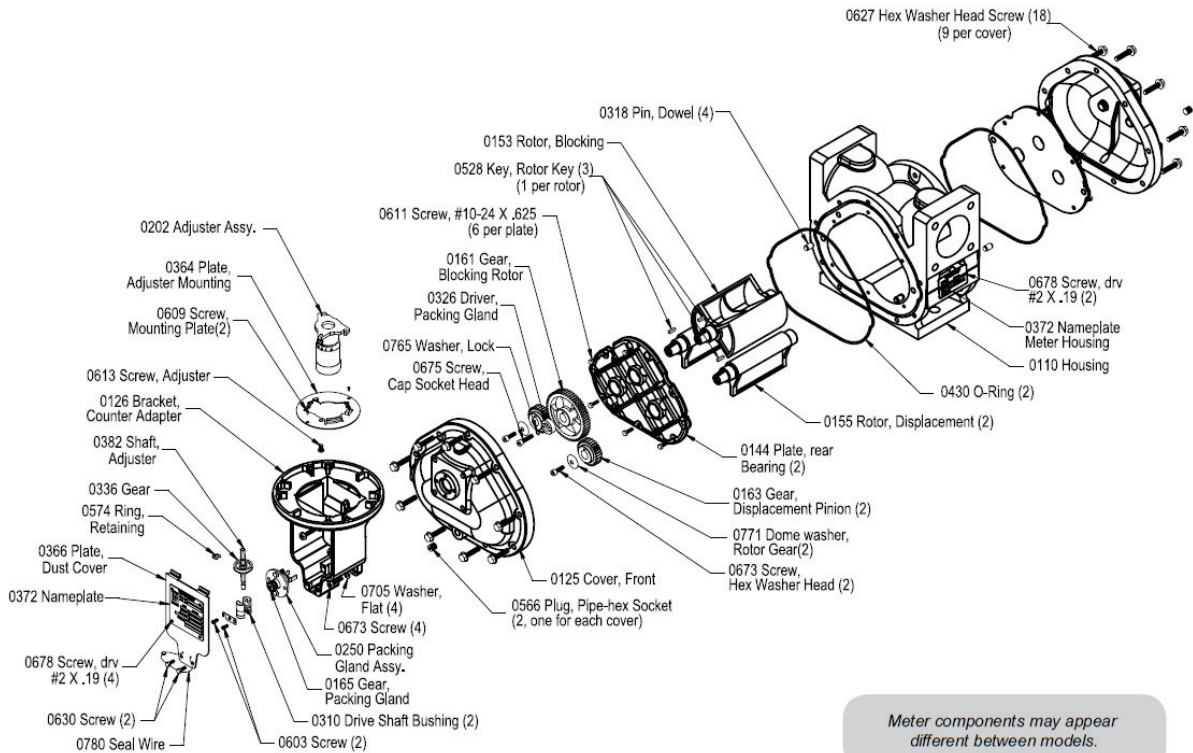
Key	Part Description	RMI Part No.			
		MA4	MA5	MA7	MA15
0310	Drive Shaft Bushing (2) <sup>2</sup>	417862	417862	417862	417862
0603	Screw (2)	06845	06845	06845	06845
0780	Seal Wire <sup>1</sup>	48864	48864	48864	48864
0630	Screw (2)	09093	09093	09093	09093
0678	Screw, drv #2 X .19 (4)	00376	00306	00306	00306
0372	Nameplate	49444	49444	49444	49444
0366	Plate, Dust Cover	49390	49390	49390	49390
0574	Ring, Retaining <sup>2</sup>	02188	02188	02188	02188
0336	Gear <sup>2</sup>	40122	40122	40122	40122
0382	Shaft, Adjuster <sup>2</sup>	48287	48287	48287	48287
0126	Bracket, Counter Adapter	494341	494341	494341	494341
0613	Screw, Adjuster	-	-	-	07063
0609	Screw, Mounting Plate (2)	-	-	-	00362
0364	Plate, Adjuster Mounting	-	-	-	42660
0202	Adjuster Assy	49403	49403	49403	49403
0675	Screw, Cap Socket Head	09336	-	07483	07483
0765	Washer, Lock	09337	-	06174	06174
0326	Driver, Packing Gland	501140	-	48756	48756
0161	Gear, Blocking Rotor	48090	48090	47646	47419
0611	Screw, #10-24 X .625 (6 per plate) <sup>1 3</sup>	09079	09079	09079	09079
0528	Key, Rotor Key (3) (1 per rotor)	48345	-	48332	501030
0153	Rotor, Blocking	48079	48079	48306	501026
0318	Pin, Dowel (4)	40665	40665	40665	40864
0627	Hex Washer Head Screw (18) (9 per cover) <sup>1</sup>	09080	09080	09080	09080

Key	Part Description	RMI Part No.			
		MA4	MA5	MA7	MA15
0678	Screw, drv #2 X .19 (2)	00306	00306	00306	00306
0372	Nameplate Meter Housing	49444	49444	49444	49444
0110	Housing	48270	48271	49445	48914
0430	O-Ring (2)	09123	09278	09258	09200
0155	Rotor, Displacement (2)	48078	48078	501311	50128
0144	Plate, Rear Bearing (2)	47670	47671	47668	49420
0163	Gear, Displacement Pinion (2)	48089	48089	47647	47420
0771	Dome Washer, Rotor Gear (2)	48319	48319	48348	48348
0673	Screw, Hex Washer Head (2) <sup>1</sup>	09110	09110	09027	09084
0125	Cover, Front	48273	48273	48302	501034
0566	Plug, Pipe-Hex Socket (2, one for each cover)	06790	06790	06790	06790
0705	Washer, Flat (4)	06743	06743	06743	06743
0673	Screw (4) <sup>1</sup>	09084	09084	09084	09084
0250	Packing Gland Assy	49561	49561	49561	48616
0165	Gear Packing Gland	501150	48283	48283	48283
	Meter Hardware Kit	501653	501653	501654	501655
	Meter Seal Kit	501312	501312	501315	501318
	Drive Shaft Kit	501664	501664	501664	501664
	Bearing Plate Hardware Kit	501661	501661	501661	501661

<sup>1</sup> Included in Meter Hardware Kit

<sup>2</sup> Included in Drive Shaft Kit

<sup>3</sup> Included in Bearing Plate Hardware Kit



Meter components may appear different between models.

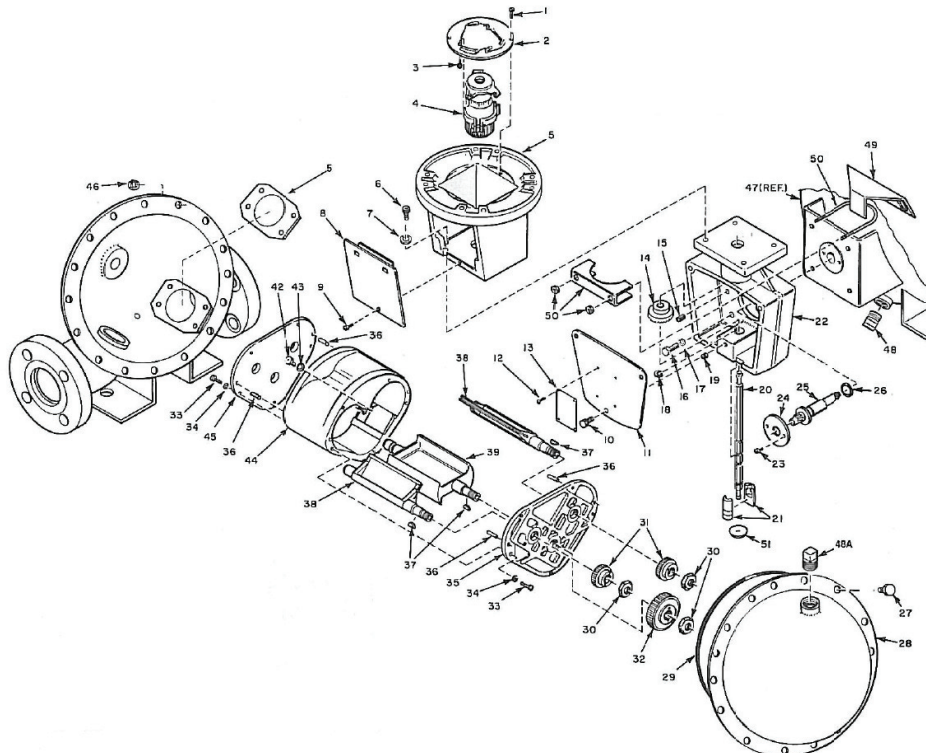
**Liquid Controls**



**PARTS BREAKDOWN - CLASS 10 MSA30 METERS FOR LPG**

Key	Part Description	RMI Part No.
1	Adjuster Plate Bolt (2)	00362
2	Adjuster Adapter Plate	42660
3	Adjuster Mounting Bolt	07063
4	Adjuster Assembly	42600
5	Adjuster Adapter	44074
6	Adjuster Adapter Bolt (4)	06754
7	Adjuster Adapter Washer (4)	06081
8	Adjuster Cover Assembly	46129
9	Adjuster Cover Bolt	04494
10	Dust Cover Bolt (3)	06255
11	Dust Cover Plate	46126
12	Name Plate Screw (4)	00306
13	Name Plate	40136
14	Adjuster Shaft Drive Gear, 2:1	40818
15	Locator Pin (2)	04295
16	Support Weldment Screw (4)	06788
17	Support Weldment Washer (4)	06019
18	Adjuster Drive Retainer (2)	02188
19	Set Screw	06148
20	Adjuster Drive Shaft	46824
21	Adjuster Drive Bushing (2)	41786
22	Packing Gland Housing	46823
23	Packing Gland Screw (4)	06840
24	Packing Gland Seal Plate	42799
25	Packing Gland Assy (Viton 2:1 Ratio)	46904

Key	Part Description	RMI Part No.
26	Packing Gland O-Ring	04294
27	Cover Bolt (20)	07305
28	Upper Rear Hemisphere	46810
29	Cover O-Ring	07176
30	Rotor Nut (3)	43817
31	Displacement Rotor Gear (2)	43816
32	Blocking Rotor Gear	43815
33	Bearing Plate Screw (16)	04646
34	Bearing Plate Washer (16)	04644
35	Front Bearing Plate	44117
36	Bearing Plate Dowel (4)	40099
37	Rotor Shaft Key (3)	04506
38	Displacement Rotor Gear (2)	40714
39	Blocking Rotor	46807
42	Meter Retaining Screw (4)	04444
43	Meter Retaining Washer (4)	06054
44	Housing	46800
45	Rear Bearing Plate	44117
46	Cover Nut (20)	06707
47	Lower Front Hemisphere	46811
48	Weldment Pipe Plug	06969
49	Housing Support	46803
50	Support Clamp	07143
51	Expansion Plug	07224
52	Meter Mounting Gasket	46835



Non-stock/special order items are not cancellable or returnable

Shop online at [www.raymurray.com](http://www.raymurray.com) or call **800-628-5044**

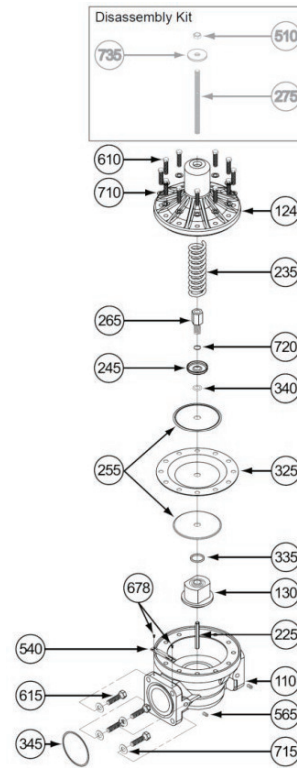
**Liquid Controls**



**A2843 DIFFERENTIAL VALVE**

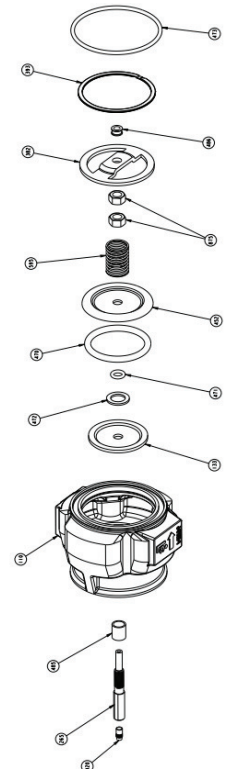
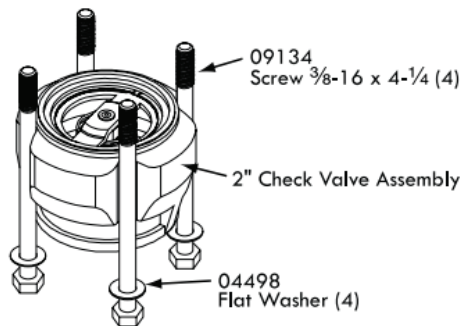
Key	Part Description	RMI Part No.
110	Valve Housing Assembly	47096
124	Valve Cover	47302
130	Piston	49947
225	Piston Guide Shaft*	Not Sold Separately
235	Spring	47305
245	Spring Retainer	47307
255	Back-Up Plate (2)	47308
265	Stand Off	47309
275	Rod Assembly	47098
325	Diaphragm	502078
335	O-Ring	06856
340	O-Ring	07900
345	O-Ring	07838
510	Nut	06055
540	Nameplate	Not Sold Separately
565	Pipe Plug (4)	04759
610	Screw (12)	04655
615	Screw (4)	06851
678	Screw (2)	00306S
710	Flat Washer (12)	09360
715	Flat Washer (2)	04498
720	Lock Washer	06070
735	Flat Washer	06663

\* Part of 47096 Housing Assembly



**A2885 INLET CHECK VALVE**

Key	Part Description	RMI Part No.
486	Bearing	Not Sold Separately
473	Buna-N O-Ring	06854
393	Spiral Retaining Spring	09137
382	Valve Spring Holder	48337
595	Compression Spring	09138
875	Self Locking Nut (2)	09143
452	O-Ring Retainer	47974
470	Buna-N O-Ring	09131
471	Buna-N O-Ring	09140
472	Spacer	47295
133	Piston	47975
265	Valve Stem	Not Sold Separately
485	Bushing	07867
110	Check Valve Housing	47973
920	Valve Core	Not Sold Separately

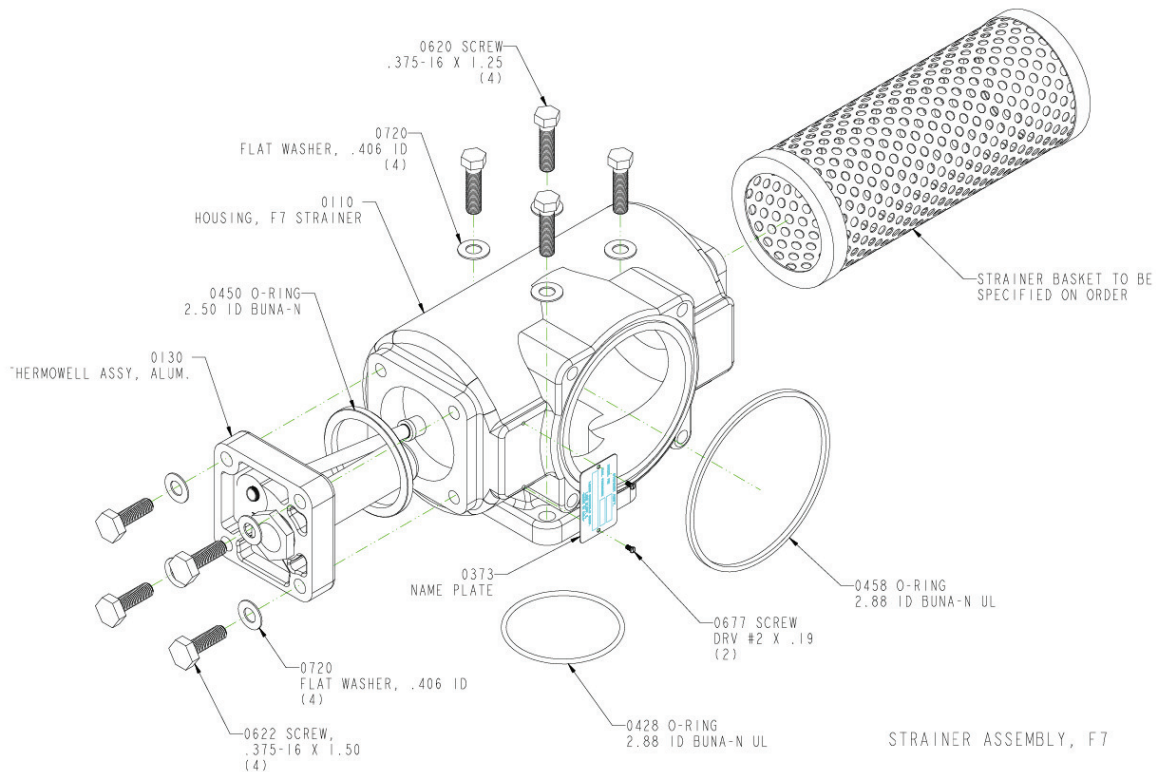


**Liquid Controls**



**STRAINER ASSEMBLY**

Key	Part Description	Strainer Part #		
		A2340	A3340	A3366A
		RMI Part No.		
0110	Housing, Aluminum	48297	48497	49426
0130	Cover, Strainer	42152	42987	49423
0200	Strainer Manual	48404	48404	48404
0373	Nameplate, Strainer	48419	48419	48419
0428	O-Ring	06854	04474	04474
0450	O-Ring	09338	06798	09201
0458	O-Ring	09335	09335	09335
0620	Hex Head Cap Screw (8)	04444	06057	07292
0677	Drive Screw (2)	00306	00306	00306
0720	Flat Washer (8)	04498	04685	09204
	Strainer Basket - 40 Mesh	A2430	A3430	A3430
	Strainer Basket - 80 Mesh	A2431	A3431	A3431
	Strainer Basket - 100 Mesh	A2432	A3432	A3432
	Strainer Basket - 200 Mesh	A2439	A3439	A3439



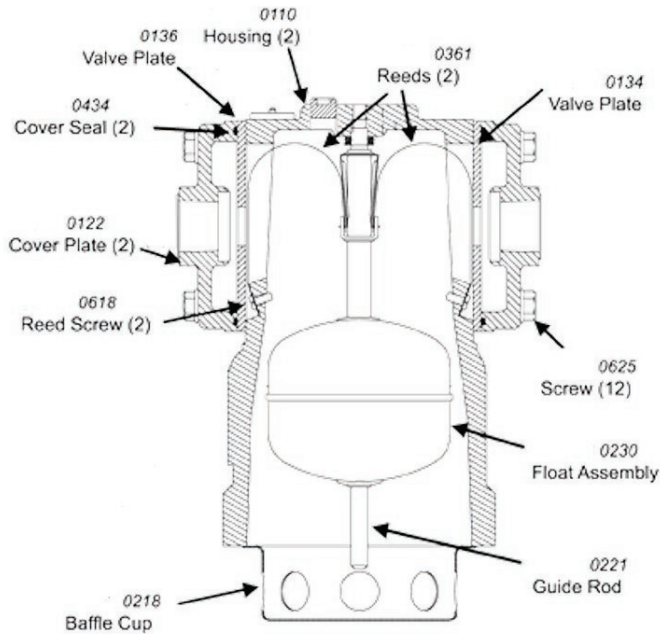
**Liquid Controls**



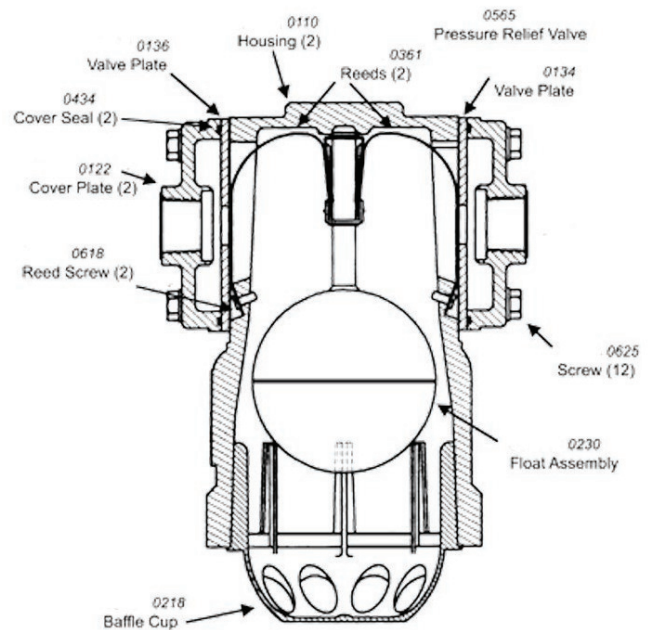
**AIR & VAPOR ELIMINATORS**

Key	Part Description	Eliminator Part #	
		A8180	A8340A
RMI Part No.			
0136	Valve Plate	43778	42824
0110	Housing, Air Eliminator	49490	49672
0361	Reeds (2)	48571	48571
0565	Pressure Relief Valve (A8340A)	-	H124
0565	Pipe Plug (A8180)*	06790	-
0134	Valve Plate	43778	42822
0625	Hex Head Screw (12)	09080	09080
0230	Float & Reed Assy	501024	501040
0221	Guide Rod	45794	-
0218	Baffle Cup	48421	48421
0618	Reed Screw (2)	06797	06797
0122	Outlet Cover, Air Eliminator (2)	48329	48329
0434	Outlet Cover Seal Ring (2)	42823	42823
0200	Manual*	48406	48406
0540	Nameplate*	49751	49751
0641	Hex Head Screw (4)*	06851	06851
0678	Screw (2)*	00306	00306
0711	Flat Washer (4)*	04498	04498
0810	Thread Protector (2)*	09169	09169

\* Not Shown



A8180



A8340A

Mid:Com



## **MID:COM E:COUNT ELECTRONIC REGISTER**

The E:Count improves the accuracy and efficiency of any mechanical meter by replacing hundreds of moving parts with a very low maintenance, solid state electronic counter. E:Counts are primarily used on bulk delivery trucks and can be mounted on or connected to any type of meter.



ECOUNT

## **MID:COM E:COUNT LT ELECTRONIC COUNTER**

E:Count LT is a 12 Volt, single product counter designed for stationary applications such as flammable liquid dispensers, and bulk plants, as well as industrial applications such as batching, blending and inventory control. The standard features allow this product to be used for many demanding applications.



ECOUNT LT

## **MID:COM 8000 COMPUTER**

The MID:COM 8000 is the ultimate, rugged, easy-to-use cab mounted computer, printer, and data transfer system. Using the SD data card, the driver has access to 50,000 complete customer records. An easy-to-follow menu guides the driver through the delivery process. The most popular software providers offer an interface that provides automatic posting from the data card to your accounts receivables.



8000



Non-stock/special order items are not cancellable or returnable

Shop online at [www.raymurray.com](http://www.raymurray.com) or call **800-628-5044**