

ACME Filler Couplings

ACME BRASS FILLER COUPLINGS

Fisher Part No.	Marshall Excelsior Part No.	Type of ACME Nut	Description
-	ME790	Knurled Brass Nut	1-1/4" F ACME x 1/4" MNPT
M100	ME100		1-1/4" F ACME x 3/8" MNPT
M101	ME101		1-1/4" F ACME x 1/2" MNPT
M110	ME110		1-3/4" F ACME x 1/2" MNPT
M111	ME111		1-3/4" F ACME x 3/4" MNPT
M112	ME112		1-3/4" F ACME x 1" MNPT
-	ME110C	EZ Grip Brass Wing Nut	1-3/4" F ACME x 1/2" MNPT
-	ME111C		1-3/4" F ACME x 3/4" MNPT
-	ME112C		1-3/4" F ACME x 1" MNPT
-	ME120		2-1/4" F ACME x 1-1/4" MNPT
M120	ME120S		2-1/4" F ACME x 1-1/4" MNPT Steel Nipple
M130	ME130		3-1/4" F ACME x 2" MNPT Steel Nipple
-	ME130A		3-1/4" F ACME x 2" MNPT w/ Screen
-	ME130-WR		3-1/4" F ACME x 2" MNPT w/ Ring
M664-24	-		4-1/4" F ACME x 3" MNPT



ME100



ME130

ACME STEEL FILLER COUPLINGS

Fisher Part No.	Marshall Excelsior Part No.	Type of ACME Nut	Description
-	ME635-4	Heavy Duty Grip Steel	1-3/4" F ACME X 1/2" MNPT
M653-6	ME635-6		1-3/4" F ACME X 3/4" MNPT
M653-8	ME635-8		1-3/4" F ACME x 1" MNPT
-	ME635-10		1-3/4" F ACME x 1-1/4" MNPT
M631-6	ME111S	Knurled Steel Nut	1-3/4" F ACME x 3/4" MNPT
M631-8	ME112S		1-3/4" F ACME x 1" MNPT
-	ME111SC	EZ Grip Steel Wing Nut	1-3/4" F ACME x 3/4" MNPT
-	ME112SC		1-3/4" F ACME x 1" MNPT
-	ME113SC		1-3/4" F ACME x 3/4" FNPT
M121	ME121S		2-1/4" F ACME x 1-1/4" MNPT
M133	ME130S		3-1/4" F ACME x 2" MNPT
M634-24	-		4-1/4" F ACME x 3" MNPT w/ Screen



ME635-6



ME111S



ME130S



ACME Filler Couplings

ACME BRASS VAPOR COUPLINGS

Fisher Part No.	Marshall Excelsior Part No.	Description
M140	ME140	1-1/4" F ACME X 3/8" MNPT Vapor Return
M394	-	1-1/4" F ACME X 3/8" MNPT - 6-1/4" Long
M141	ME141	1-1/4" F ACME x 1/2" MNPT Vapor Return
M150	ME150	1-3/4" F ACME x 3/4" MNPT Vapor Return
M151	ME151	1-3/4" F ACME x 1" MNPT Vapor Return
M160	-	2-1/4" F ACME x 1-1/4" MNPT Vapor Return
-	ME160	2-1/4" F ACME x 1-1/4" MNPT Vapor Return - Brass w/ Steel Nipple



ME141



ME160S

ACME STEEL VAPOR COUPLINGS

Fisher Part No.	Marshall Excelsior Part No.	Description
M640-4	ME141S	1-1/4" F ACME x 1/2" MNPT Vapor Return
-	ME150S	1-3/4" F ACME x 3/4" MNPT Vapor Return
-	ME646-4	1-3/4" F ACME x 1/2" MNPT Vapor Return- 7" O.A.L.
M646-6	ME646-6	1-3/4" F ACME x 1" MNPT Vapor Return- 7" O.A.L.
M646-8	ME646-8	1-3/4" F ACME x 1" MNPT Vapor Return- 7" O.A.L.
-	ME646-10	1-3/4" F ACME x 1-1/4" MNPT Vapor Return- 7" O.A.L.
M641-8	ME151S	1-3/4" F ACME x 1" MNPT Vapor Return- 3-1/4" O.A.L.
-	ME160S	2-1/4" F ACME x 1-1/4" MNPT Vapor Return- 3-3/8" O.A.L.



ME646-10

SWIVEL ACME HOSE COUPLING

RMI Part No.		Material	Hose I.D.	F. ACME Size
Marshall Excelsior	Fisher			
ME3162-32S	M3162-32S	Steel	2"	3-1/4"
ME3162-32B	M3162-32B	Brass	2"	3-1/4"



ME3162 SERIES



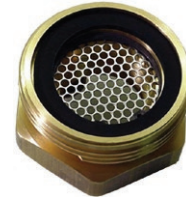
ACME Adapters

ACME BRASS MALE ACME X MPT ADAPTOR

Fisher Part No.	Marshall Excelsior Part No.	Description
M498-4/2*	ME498-4/2*	1-1/4" M ACME x 1/2" MNPT x 1/4 FNPT ADAPTOR
M498-6/3*	ME498-6/3*	1-1/4" M ACME x 3/4" MNPT x 3/8 FNPT ADAPTOR
M141	ME215	1-3/4" M ACME x 3/4" MNPT ADAPTOR
M150	ME216	1-3/4" M ACME x 1" MNPT ADAPTOR
M151	ME217	1-3/4" M ACME x 1-1/4" MNPT ADAPTOR
M160	ME217A	1-3/4" M ACME x 1-1/4" MNPT ADAPTOR WITH SCREEN
-	ME233	2-1/4" M ACME x 1-1/4" MNPT ADAPTOR
-	ME502-12/8*	2-1/4" M ACME x 1-1/2" MNPT x 1" FNPT ADAPTOR
-	ME502-16/10*	2-1/4" M ACME x 2" MNPT x 1-1/4 FNPT ADAPTOR
-	ME502-16/12*	2-1/4" M ACME x 2" MNPT x 1-1/2 FNPT ADAPTOR
-	ME503-16	3-1/4" M ACME x 2" MNPT ADAPTOR
-	ME503A-16	3-1/4" M ACME x 2" MNPT ADAPTOR with SCREEN
-	ME503-20	3-1/4" M ACME x 2-1/2" MNPT ADAPTOR
-	ME262	3-1/4" M ACME x 3" MNPT ADAPTOR
-	ME262A	3-1/4" M ACME x 3" MNPT ADAPTOR with SCREEN



ME503-16



ME503A-16

* NPT pipe threads are dual threaded male and female

ACME BRASS ADAPTOR WITH VENT VALVES

ME503JB-16



RMI Part No.	Description
ME252JB-16	3-1/4" M Acme X 2" FNPT with Brass Vent Valve
ME252AJB-16	3-1/4" M Acme X 2" FNPT with Screen and Brass Vent Valve
ME503JB-16	3-1/4" M Acme X 2" MNPT with Brass Vent Valve
ME503AJB-16	3-1/4" M Acme X 2" MNPT with Screen and Brass Vent Valve

ACME ADAPTOR WITH SS VENT VALVES

ME503JS



RMI Part No.	Description
ME252JS-16	3-1/4" M ACME X 2" FNPT Stainless Steel
ME252SJS-16	3-1/4" M ACME X 2" FNPT Stainless Steel w Vent Valve
ME252AJS-16	3-1/4" M ACME X 2" FNPT Stainless Steel w Vent Valve & Screen
ME503SJS-16	3-1/4" M ACME X 2" MNPT Stainless Steel w Vent
ME503JS-16	3-1/4" M ACME X 2" MNPT Stainless Steel
ME503AJS-16	3-1/4" M ACME X 2" MNPT Stainless Steel with Screen & Vent Valve

ACME BRASS MALE X FNPT ADAPTOR

Fisher Part No.	Marshall Excelsior part No.	Description
M192	ME192	1-1/4" M ACME x 1/2" FNPT
M193	ME193	1-1/4" M ACME x 3/4" FNPT
-	ME210	1-3/4" M ACME x 1/4" FNPT
M211	ME211	1-3/4" M ACME x 3/8" FNPT
-	ME212	1-3/4" M ACME x 1/2" FNPT
-	ME213	1-3/4" M ACME x 3/4" FNPT
-	ME214	1-3/4" M ACME x 1" FNPT
-	ME250	3-1/4" M ACME x 1-1/4" FNPT
-	ME250A	3-1/4" M ACME x 1-1/4" FNPT with Screen
-	ME251	3-1/4" M ACME x 1-1/2" FNPT
-	ME252-16	3-1/4" M ACME x 2" FNPT
-	ME252A-16	3-1/4" M ACME x 2" FNPT w Screen
M498-4/2*	ME498-4/2*	1-1/4" M ACME x 1/4" FNPT x 1/2" MNPT
M498-6/3*	ME498-6/3*	1-1/4" M ACME x 3/8" FNPT x 3/4" MNPT
-	ME502-12/8*	2-1/4" M ACME x 1" FNPT x 1-1/2" MNPT
-	ME502-16/10*	2-1/4" M ACME x 1-1/4" FNPT x 2" MNPT
-	ME502-16/12*	2-1/4" M ACME x 1-1/2" FNPT x 2" MNPT
-	ME508-24	3-1/4" M ACME x 3" FNPT
-	ME508A-24	3-1/4" M ACME x 3" FNPT with Screen

* NPT pipe threads are dual threaded, Female & Male.



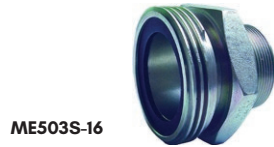
ME252-16

ACME Adapters

ACME STEEL MALE X MNPT ADAPTOR

Marshall Excelsior Part No.	Description
ME520S-8	1-1/4" M ACME x 1" MNPT
ME521S-4	1-3/4" M ACME x 1/2" MNPT
ME215S	1-3/4" M ACME x 3/4" MNPT
ME216S	1-3/4" M ACME x 1" MNPT
ME217S	1-3/4" M ACME x 1-1/4" MNPT
ME233S	2-1/4" M ACME x 1-1/4" MNPT
ME502S-16/10 *	2-1/4" M ACME x 2" MNPT x 1-1/4" FNPT
ME503S-16	3-1/4" M ACME x 2" MNPT
ME262S	3-1/4" M ACME x 3" MNPT

* NPT Pipe threads are dual threaded male & female



ME503S-16

ACME STEEL MALE X FNPT ADAPTOR

Marshall Excelsior Part No.	Description
ME213S	1-3/4" M ACME x 3/4" FNPT
ME214S	1-3/4" M ACME x 1" FNPT
ME502S-16/10*	2-1/4" M ACME x 1-1/4" FNPT x 2" MNPT
ME252S-16	3-1/4" M ACME x 2" FNPT
ME508S-24	3-1/4" M ACME x 3" FNPT

* NPT Pipe threads are dual threaded male & female



ME213S

ACME BRASS MALE ACME ADAPTOR

Marshall Excelsior Part No.	Description
ME270	1-1/4" M ACME x 1-1/4" M ACME
ME273	1-3/4" M ACME x 1-3/4" M ACME
ME275	2-1/4" M ACME x 2-1/4" M ACME
ME277	3-1/4" M ACME x 3-1/4" M ACME



ME277

ACME STEEL MALE ACME ADAPTOR

Marshall Excelsior Part No.	Description
ME273S	1-3/4" M ACME x 1-3/4" M ACME
ME275S	2-1/4" M ACME x 2-1/4" M ACME
ME277S	3-1/4" M ACME x 3-1/4" M ACME



ME277S

ACME BRASS ADAPTOR

Fisher Part No.	Marshall Excelsior Part No.	Description
M611	ME611	2-1/4" F ACME x 1-3/4" M ACME
M612	ME612	3-1/4" F ACME x 1-3/4" M ACME
M442	ME442	3-1/4" F ACME x 1-1/4" FNPT
-	ME614	3-1/4" F ACME x 2-1/4" M ACME
M613	ME623	4-1/4" F ACME x 3-1/4" M ACME



ME612

ACME STEEL ADAPTOR

Fisher Part No.	Marshall Excelsior Part No.	Description
-	ME611S	2-1/4" F ACME x 1-3/4" M ACME
M622	ME612S	3-1/4" F ACME x 1-3/4" M ACME
-	ME442S	3-1/4" F ACME x 1-1/4" FNPT
-	ME614S	3-1/4" F ACME x 2-1/4" M ACME



ACME Caps

ACME METAL CAPS

Fisher Part No.	Marshall Excelsior Part No.	Type of ACME Nut	Description
-	ME220FP	Knurled Brass	1-1/4" F ACME Cap
M229	ME229	Knurled Brass	1-3/4" F ACME Cap
M229-1	ME229-1	Knurled Brass	1-3/4" F ACME Cap with Ring and Chain
M219	ME229S	Knurled Steel	1-3/4" F ACME Cap
M219-1	ME229S-1	Knurled Steel	1-3/4" F ACME Cap with Ring and Chain
-	ME229F	Wing Nut Brass	1-3/4" F ACME Cap
-	ME229F-1C	Knurled Brass	1-3/4" F ACME Cap with Cable
-	ME229FS	Wing Nut Steel	1-3/4" F ACME Cap
-	ME229FS-1	Wing Nut Steel	1-3/4" F ACME Cap with Ring and Chain
-	ME229FS-1C	Knurled Steel	1-3/4" F ACME Cap with Cable
M431	ME431	Wing Nut Brass	2-1/4" F ACME w/ Knob Plug
-	ME431F-1C	Wing Nut Brass	2-1/4" F ACME w/ Knob Plug with Ring and Cable
M432	ME431FS	Wing Nut Steel	2-1/4" F ACME w/ Knob Plug
-	ME431FS-1	Wing Nut Steel	2-1/4" F ACME w/ Knob Plug with Ring and Chain
M441	ME441F	Wing Nut Brass	3-1/4" F ACME Cap w/ Knob Plug
-	ME441F-1C	Wing Nut Brass	3-1/4" F ACME Cap with Cable
M443	ME441FS	Wing Nut Steel	3-1/4" F ACME Cap w/ Knob Plug
-	ME441FS-1	Wing Nut Steel	3-1/4" F ACME Cap w/ Knob Plug Ring and Chain
M605-34	-	Wing Nut Brass	4-1/4" F ACME Cap with Knob and Plug
M625-34	-	Wing Nut Steel	4-1/4" F ACME Cap with Knob and Plug



ME229



ME431FS-1

ACME PLASTIC CAPS

Fisher Part No.	Marshall Excelsior Part No.	Description
-	ME106	3-1/4" F ACME Dust Cap Yellow Plastic
-	ME106-1	3-1/4" F ACME Dust Cap Yellow Plastic w/ Ring and chain
M108	ME108	1-1/4" F ACME Cap Yellow Plastic
-	ME108-1	1-1/4" F ACME Cap Yellow Plastic w/ Ring and chain
M109	ME109	1-3/4" F ACME Cap Yellow Plastic
-	ME109-1	1-3/4" F ACME Cap Yellow Plastic w/ Ring and chain



ME108-1

ACME CAPS WITH FLANGE

RMI Part No.				F. ACME	Flange Diameter
Brass		Steel			
Cap w/ Flange	Cap w/ Flange & Cable	Cap w/ Flange	Cap w/ Flange & Cable		
ME229F5	ME229F5-1C	ME229FS5	ME229FS5-1C	1-3/4"	5"
ME441F8	ME441F8-1C	ME441FS8	ME441FS8-1C	3-1/4"	8"



ME229F5-1C



Non-stock/special order items are not cancellable or returnable

Shop online at www.raymurray.com or call 800-628-5044

ACME Tools, Wear Gauges, and Accessories

HEAVY DUTY SPANNER WRENCH

Aluminum ACME Spanner wrench for 1-3/4", 2-1/4", 3-1/4", and 4-1/4" Female ACME Caps.

Part No.	Description
MEP120B	17-1/2" long Aluminum ACME Wench



MEP120B

CHAINS AND CABLES FOR CAPS AND PLUGS

Fits	Fisher Part No.	Marshall Excelsior Part No.	Type
1-1/4" ACME Cap & Plug	P147*	MEP147*	Chain
1-3/4" ACME Plug	P147*	MEP147*	Chain
1-3/4" ACME Cap and Plug	P148**	MEP148**	Chain
2-1/4" ACME Plug	P148**	MEP148**	Chain
2-1/4" ACME Cap	P167	MEP168	Cable
3-1/4" ACME Plug	P183	MEP183	Chain
2-1/4" ACME Cap	P167	MEP168	Cable
4-1/4" ACME Plug	P167	MEP168	Cable

*P147 & MEP147 ring fits over 3/4" MNPT

**P148 & MEP148 ring fits over 1-1/4" MNPT



MEP147



MEP167



MEP168

ACME DUST PLUGS

RMI Part No.									M. ACME
Aluminum			Brass			Plastic			
Plug Only	Chain Only	Plug w/ Chain	Plug Only	Chain Only	Plug w/ Chain	Plug Only	Chain Only	Plug w/ Chain	
-	-	-	ME178B	MEP148	ME178B-1	ME178	MEP147	ME178-1	1-1/4"
ME239	MEP148	ME239-1	ME179	MEP148	ME179B-1	ME179	MEP148	ME179-1	1-3/4"
-	-	-	ME180B	MEP168	ME180B-1	ME180	MEP148	ME180-1	2-1/4"
-	-	-	ME181B	MEP168	ME181B-1	ME181	ME183	ME181-1	3-1/4"



ME179-1



ME181B

ACME WEAR GAUGES "GO-NO-GO GAUGE"

The importance of Secure ACME connections during the transfer of gas cannot be over emphasized.

Whereas transfer hoses are covered by statutory inspection, no such provision exists for the connectors, yet they are subjected to constant use and sometimes abuse. As a result, the point when they should be changed becomes subjective.

ACME couplings should be regularly checked for

- WEAR
- CRACKS
- CORROSION
- SPLITS
- OVALITY

To measure wear, the gauges have a suitable wear allowance built in. If the gauge can be threaded more than one turn on (or into), the coupling has reached or exceeded the acceptable wear limits and should be changed.

Available as boxed sets or individual items

Full instructions included.

RH sets include 1-3/4", 2-1/4" and 3-1/4" plugs and rings for checking Right hand threads



906467KIT

RMI Part No.	Description
253566	3-1/4" ACME Ring Gauge for Male ACME Adapter
253570	2-1/4" ACME Ring Gauge for Male ACME Adapter
253568	1-3/4" ACME Ring Gauge for Male ACME Adapter
253578	3-1/4" ACME Plug Gauge for Female ACME Coupling
253581	2-1/4" ACME Plug Gauge for Female ACME Coupling
253569	1-3/4" ACME Plug Gauge for Female ACME Coupling
906467KIT	Complete set with carrying case

*Order ring gauges to test male ACMEs and plug gauges to test female ACMEs