

Fittings

SCHEDULE 80 FITTINGS

	Pressure (PSI)	1/4" *	3/8" *	1/2" *	3/4" *	1" *	1-1/4" *	1-1/2" *	2" *	2-1/2" *	3" *
Description	RMI Part No.										
45° Elbow	2000	103-04	103-06	103-08	103-12	103-16	103-20	103-24	103-32	103-40	103-48
90° Elbow	3000	104-04	104-06	104-08	104-12	104-16	104-20	104-24	104-32	104-40	104-48
90° Street Elbow	3000	110-04	110-06	110-08	110-12	110-16	110-20	110-24	110-32	-	-
Tee	2000	108-04	108-06	108-08	108-12	108-16	108-20	108-24	108-32	108-40	108-48
Cross	2000	102-04	102-06	102-08	102-12	102-16	102-20	102-24	102-32	102-40	102-48
Union	3000	109-04	109-06	109-08	109-12	109-16	109-20	109-24	109-32	109-40	109-48
Coupling	3000	100-04	100-06	100-08	100-12	100-16	100-20	100-24	100-32	100-40	100-48
Plug	3000	105-04	105-06	105-08	105-12	105-16	105-20	105-24	105-32	105-40	105-48
Cap	3000	114-04	114-06	114-08	114-12	114-16	114-20	114-24	114-32	114-40	114-48

*= Pipe Size

SCHEDULE 80 SCREWED REDUCING FITTINGS, FORGED STEEL

	1/4" x 1/8" *	3/8" x 1/4" *	1/2" x 1/8" *	1/2" x 1/4" *	1/2" x 3/8" *	3/4" x 1/4" *	3/4" x 3/8" *	3/4" x 1/2" *
Description	RMI Part No.							
Bushing	106-0402	106-0604	106-0802	106-0804	106-0806	106-1204	106-1206	106-1208
Reducer Coupling	-	107-0604	-	107-0804	107-0806	107-1204	107-1206	107-1208
Swage, Concentric	-	-	-	-	-	150-1204	-	150-1208
Swage, Eccentric	-	-	-	-	-	-	-	-

	1" x 1/4" *	1" x 3/8" *	1" x 1/2" *	1" x 3/4" *	1-1/4" x 1/4" *	1-3/8" x 3/8" *	1-1/4" x 1/2" *	1-1/4" x 3/4" *
Description	RMI Part No.							
Bushing	106-1604	106-1606	106-1608	106-1612	106-2004	106-2006	106-2008	106-2012
Reducer Coupling	-	-	107-1608	107-1612	-	-	107-2008	107-2012
Swage, Concentric	150-1604	-	150-1608	150-1612	-	-	150-2008	150-2012
Swage, Eccentric	-	-	-	-	-	-	-	-

	1-1/4" x 1" *	1-1/2" x 1/4" *	1-1/2" x 3/8" *	1-1/2" x 1/2" *	1-1/2" x 3/4" *	1-1/2" x 1" *	1-1/2" x 1-1/4" *	2" x 1/4" *
Description	RMI Part No.							
Bushing	106-2016	106-2404	106-2406	106-2408	106-2412	106-2416	106-2420	106-3204
Reducer Coupling	107-2016	-	-	-	-	107-2416	107-2420	-
Swage, Concentric	150-2016	-	-	-	150-2412	150-2416	150-2420	-
Swage, Eccentric	151-2016	-	-	-	-	151-2416	151-2420	-

*= Pipe Size



Non-stock/special order items are not cancellable or returnable

Shop online at www.raymurray.com or call **800-628-5044**

Fittings

	2" x 3/8" *	2" x 1/2" *	2" x 3/4" *	2" x 1" *	2" x 1-1/4" *	2" x 1-1/2" *	2-1/2" x 2" *	3" x 3/4" *
Description	RMI Part No.							
Bushing	106-3206	106-3208	106-3212	106-3216	106-3220	106-3224	106-4032	106-4804
Reducer Coupling	-	107-3208	107-3212	107-3216	107-3220	107-3224	107-4032	-
Swage, Concentric	-	150-3208	150-3212	150-3216	150-3220	150-3224	150-4032	-
Swage, Eccentric	-	-	-	151-3216	151-3220	151-3224	-	-

	3" x 1/2" *	3" x 3/4" *	3" x 1" *	3" x 1-1/4" *	3" x 1-1/2" *	3" x 2" *	3" x 2-1/2" *	4" x 3" *
Description	RMI Part No.							
Bushing	106-4808	106-4812	106-4816	106-4820	106-4824	106-4832	106-4840	106-6448
Reducer Coupling	-	-	-	-	-	107-4832	107-4840	-
Swage, Concentric	-	-	-	-	-	150-4832	150-4840	-
Swage, Eccentric	-	-	-	-	-	-	-	-

*= Pipe Size



45D ELBOW



90D ELBOW



BUSHING



CONCENTRIC SWAGE



COUPLING



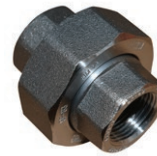
ECCENTRIC SWAGE



STREET ELBOW



TEE



UNION



Nipples

SCHEDULE 80 PIPE NIPPLES



SCH 80 NIPPLE

Pipe Size	LENGTH												
	CLOSE	1-1/2"	2"	3"	4"	5"	6"	7"	8"	9"	10"	11"	12"
	RMI Part No.												
1/4"	121-00	121-015	121-02	121-03	121-04	121-05	121-06	-	121-08	-	-	-	-
3/8"	122-00	122-015	122-02	122-03	122-04	122-05	122-06	-	122-08	-	-	-	-
1/2"	123-00	123-015	123-02	123-03	123-04	123-05	123-06	-	123-08	-	123-10	-	123-12
3/4"	124-00	-	124-02	124-03	124-04	124-05	124-06	124-07	124-08	124-09	124-10	124-11	124-12
1"	125-00	-	125-02	125-03	125-04	125-05	125-06	125-07	125-08	125-09	125-10	125-11	125-12
1-1/4"	126-00	-	126-02	126-03	126-04	126-05	126-06	126-07	126-08	126-09	126-10	126-11	126-12
1-1/2"	127-00	-	127-02	127-03	127-04	127-05	127-06	127-07	127-08	127-09	127-10	127-11	127-12
2"	128-00	-	-	128-03	128-04	128-05	128-06	128-07	128-08	128-09	128-10	128-11	128-12
2-1/2"	129-00	-	-	-	129-04	-	129-06	-	-	129-09	129-10	-	-
3"	130-00	-	-	130-03	130-04	130-05	130-06	130-07	130-08	130-09	130-10	130-11	130-12

Flanges

FLEXITALLIC SPIRAL WOUND FLANGE GASKETS

RMI Part No.	Size	Weight	ID	OD
300/0200	2"	300#	2-3/4"	4-3/4"
300/0300	3"	300#	4"	5-7/8"
300/0300M	3" Modified	300#	4-1/4"	5-7/8"
300/0400	4"	300#	5"	7-1/8"
150/1400	14"	150#	14-5/8"	17-3/4"
SG15M	15" Manway	150#	15"	16-3/4"
150/1600	16"	150#	16-5/8"	20-1/4"
150/1800	18"	150#	18-11/16"	21-5/8"
150/2000	20"	150#	20-11/16"	23-7/8"



BLIND FLANGE



SCREWED FLANGE



SLIP-ON FLANGE



FLEXITALLIC GASKET

300 LB. STANDARD FORGED STEEL FLANGES

RMI Part No.	Flange Size & Type	Flange Diameter	Thread/ Pipe Size	Type of Flange
20/3R/SC	1-1/4" RF	5-1/4"	1-1/4" NPT	Screwed
20/3R/SO	1-1/4" RF	5-1/4"	1-1/4" PIPE	Slip-On
24/3R/SC	1-1/2" RF	6-1/2"	1-1/2" NPT	Screwed
32/3F/SC	2" FF	6-1/2"	2" NPT	Screwed
32/3R/SC	2" RF	6-1/2"	2" NPT	Screwed
32/3R/SO	2" RF	6-1/2"	2" PIPE	Slip-On
32/3R/BL	2" RF	6-1/2"	-	Blind
40/3R/SC	2-1/2" RF	7-1/2"	2-1/2" NPT	Screwed
40/3R/SC32	2-1/2" RF	7-1/2"	2" NPT	Screwed
48/3R/SC	3" RF	8-1/4"	3" NPT	Screwed
48/3R/SO32	3" RF	8-1/4"	2" PIPE	Slip-On
48/3F/BL	3" FF	8-1/4"	-	Blind
48/3R/SC32	3" RF	8-1/4"	2" NPT	Screwed
48/3F/SO	3" FF	8-1/4"	3" PIPE	Slip-On
48/3R/BL	3" RF	8-1/4"	-	Blind
64/3F/SO	4" FF	10"	4" PIPE	Slip-On

*Other sizes and styles may be available. Contact RMI customer service for more info

STUDS W/ NUTS

B7 Studs with two 2H nuts for ANSI Flange Assembly

300# FLANGE REQUIREMENTS

RMI Part No.	Flange Size	Stud Size	No. of Studs
132-08250	1/2"	1/2" x 2-1/2"	4
132-10300	3/4"	5/8" x 3"	4
132-10300	1"	5/8" x 3"	4
132-10300	1-1/4"	5/8" x 3"	4
132-12350	1-1/2"	3/4" x 3-1/2"	4
132-10350	2"	5/8" x 3-1/2"	8
132-12400	3"	3/4" x 4"	8
132-12450	4"	3/4" x 4-1/2"	8

150# MANWAY REQUIREMENTS

RMI Part No.	Flange/ Manway Size	Stud Size	No. of Studs
132-16500	14"	1" x 5"	12
132-16550	16"	1" x 5-1/2"	16
132-18600	18"	1-1/8" x 6"	16
132-18600	20"	1-1/8" x 6"	20



Non-stock/special order items are not cancellable or returnable

Shop online at www.raymurray.com or call **800-628-5044**