

Flare Fittings

SHORT FORGED NUT

RMI Part No.	Flare	Pack
NS4C	1/4"	100
NS4E	3/8"	100
NS4F	1/2"	100
NS4I	5/8"	50
NS4K	3/4"	25



REDUCING NUTS

RMI Part No.	Flare	Pack
NRS4EC	3/8" X 1/4"	50
NRS4FE	1/2" X 3/8"	50
NRS4IE	5/8" X 3/8"	50
NRS4IF	5/8" X 1/2"	50

FLARE ELBOW

RMI Part No.	Flare	Pack
55EXXX	3/8" x 3/8"	50
55FXXX	1/2" x 1/2"	25
55FE	1/2" x 3/8"	25
55IXXX	5/8" x 5/8"	10
55IE	5/8" x 3/8"	5
55IF	5/8" x 1/2"	10
55KXXX	3/4" x 3/4"	10



SWIVEL NUT

RMI Part No.	Flare	Pack
US4E	3/8" x 3/8"	50
US4EC	3/8" x 1/4"	25
US4F	1/2" x 1/2"	25
US4FE	1/2" x 3/8"	25
US4I	5/8" x 5/8"	10
US4IF	5/8" x 1/2"	10
US4K	3/4" x 3/4"	10



FULL UNION

RMI Part No.	Flare	Pack
42CXXX	1/4"	50
42EXXX	3/8"	50
42FXXX	1/2"	25
42IXXX	5/8"	10
42KXXX	3/4"	50



REDUCING UNION

RMI Part No.	Flare	Pack
42EC	3/8" x 1/4"	50
42FC	1/2" x 1/4"	20
42FE	1/2" x 3/8"	50
42IE	5/8" x 3/8"	25
42IF	5/8" x 1/2"	25

MALE ADAPTER

RMI Part No.	Flare		Pack Std/LS
	Standard	Long Shank	
48CA	-	1/4" x 1/8"	50
48CC	-	1/4" x 1/4"	50
48CE	-	1/4" x 3/8"	50
48CF	-	1/4" x 1/2"	50
48EA	-	3/8" x 1/8"	50
48EC	-	3/8" x 1/4"	50
48EE	-	3/8" x 3/8"	50
48EF	48EF-LS	3/8" x 1/2"	25/20
48EK	48EK-LS	3/8" x 3/4"	25/20
48FC	-	1/2" x 1/4"	25
48FE	-	1/2" x 3/8"	40
48FF	48FF-LS	1/2" x 1/2"	25/20
48FK	48FK-LS	1/2" x 3/4"	20/20
48IC	-	5/8" x 1/4"	25
48IE	-	5/8" x 3/8"	25
48IF	48IF-LS	5/8" x 1/2"	25/25
48IK	48IK-LS	5/8" x 3/4"	25/10
48KF	-	3/4" x 1/2"	25
48KK	-	3/4" x 3/4"	25



2-WAY TEE

RMI Part No.	Fl x Fl x MNPT 1 x 2 x 3	Pack
45EEC	3/8" X 3/8" X 1/4"	25
45EEE	3/8" X 3/8" X 3/8"	25
45EEF	3/8" X 3/8" X 1/2"	25
45FEF	1/2" X 3/8" X 1/2"	25
45FFE	1/2" X 1/2" X 3/8"	25
45FFF	1/2" X 1/2" X 1/2"	25
45IIF	5/8" X 5/8" X 1/2"	25



Flare Fittings

FEMALE ADAPTER

RMI Part No.	Fl x MNPT	Pack
46CA	1/4" x 1/8"	100
46CC	1/4" x 1/4"	100
46EA	3/8" x 1/8"	50
46EC	3/8" x 1/4"	50
46EE	3/8" x 3/8"	50
46EF	3/8" x 1/2"	25
46EK	3/8" x 3/4"	25
46FE	1/2" x 3/8"	40
46FF	1/2" x 1/2"	25
46FK	1/2" x 3/4"	25
46IE	5/8" x 3/8"	25
46IF	5/8" x 1/2"	25
46IK	5/8" x 3/4"	10



FLARE PLUG

RMI Part No.	Flare	Pack
P2CXXX	1/4"	100
P2EXXX	3/8"	100
P2FXXX	1/2"	50
P2IXXX	5/8"	25



PLASTIC FLARE PLUG

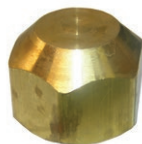
RMI Part No.	Flare	Pack
T-6XXX	3/8"	25
T-7XXX	1/2"	25
T-8XXX	5/8"	25



*Dirt Seal Only - Do not use under pressure

FLARE CAP

RMI Part No.	Flare	Pack
N5EXXX	3/8"	100
N5FXXX	1/2"	50
N5IXXX	5/8"	25
N5KXXX	3/4"	30



MALE ELBOW ADAPTER

RMI Part No.	Flare	Pack
49CA	1/4" X 1/8"	50
49CC	1/4" X 1/4"	25
49CE	1/4" X 3/8"	50
49CF	1/4" X 1/2"	25
49EA	3/8" X 1/8"	50
49EC	3/8" X 1/4"	50
49EE	3/8" X 3/8"	25
49EF	3/8" X 1/2"	25
49EK	3/8" X 3/4"	10
49FC	1/2" X 1/4"	25
49FE	1/2" X 3/8"	25
49FF	1/2" X 1/2"	25
49FK	1/2" X 3/4"	20
49IE	5/8" X 3/8"	25
49IF	5/8" X 1/2"	25
49IK	5/8" X 3/4"	20
49KF	3/4" X 1/2"	25
49KK	3/4" X 3/4"	25



FEMALE ELBOW ADAPTER

RMI Part No.	Flare	Pack
54EC	3/8" x 1/4"	25
54EE	3/8" x 3/8"	25
54EF	3/8" x 1/2"	25
54EK	3/8" x 3/4"	10
54FE	1/2" x 3/8"	25
54FF	1/2" x 1/2"	20
54FK	1/2" x 3/4"	25
54IE	5/8" x 3/8"	10
54IF	5/8" x 1/2"	20
54IK	5/8" x 3/4"	10



3-WAY REDUCING TEE

RMI Part No.	Fl x Fl x Fl 1 x 2 x 3	Pack
44EEC	3/8" X 3/8" X 1/4"	10
44EEF	3/8" X 3/8" X 1/2"	10
44EEI	3/8" X 3/8" X 5/8"	10
44FEE	1/2" X 3/8" X 3/8"	10
44FEF	1/2" X 3/8" X 1/2"	10
44FFE	1/2" X 1/2" X 3/8"	10
44FFI	1/2" X 1/2" X 5/8"	10
44FFK	1/2" X 1/2" X 3/4"	10
44IFF	5/8" X 1/2" X 1/2"	10
44IFI	5/8" X 1/2" X 5/8"	10
44IIE	5/8" X 5/8" X 3/8"	10
44IIF	5/8" X 5/8" X 1/2"	10

3-WAY TEE

RMI Part No.	Flare	Pack
44CXXX	1/4"	50
44EXXX	3/8"	25
44FXXX	1/2"	25
44IXXX	5/8"	25
44KXXX	3/4"	20

3



1

2

SAE COPPER SEAL BONNET

RMI Part No.	Flare	Pack
BICXXX	1/4"	100
BIEXXX	3/8"	100
BIFXXX	1/2"	100
BIIXXX	5/8"	25
BIKXXX	3/4"	25



Non-stock/special order items are not cancellable or returnable

Shop online at www.raymurray.com or call **800-628-5044**