

Vapor Meters

RESIDENTIAL METERS

American Meter has a full line of Vapor meters. Domestic and commercial meters are compact, lightweight, rugged die-cast aluminum alloy construction. Meters are temperature compensated for accurate measurement.



AC-250



AM-250

RMI Part No.	Meter Connection	Position	Meter Working Pressure	Index Available**	SCFH*		BTU/Hr*	
					Propane	Propane	Propane	Propane
AM-250TC-CF	3/4" FNPT	Side	5#	Cubic Feet	160		404,000	
AC-250TC-CF	1"MC	Top	5#	Cubic Feet	160		404,000	
AL-425TCL-CF	1-1/4" MC	Top	10#	Cubic Feet	270		694,000	

* @60-degree F., 11" W.C. Inlet

** Must have Special Index or factor index reading when operating pressure is greater than 11" W.C. Adjustment must be made when operating at altitudes greater than 1000 feet above sea level. Cubic foot indexes only per National Board of Weights & Measures.

COMMERCIAL & INDUSTRIAL METERS

Large commercial and industrial vapor meters have rugged construction, lightweight and ample capacity for all sizes of propane installations.



AL-1400

RMI Part No.	Meter Connection	Position	Meter Working Pressure	Index Available**	@60-degree, 11" W.C.**		@60-degree, 10# PSIG	
					CFH	BTU	CFH	BTU
AL-425TCH-CF	1-1/4" MC	TOP	25#	Cubic Feet	270	694,000	840	2,124,000
AL-425TCH-CFH	2-1/4" MC	TOP	25#	10# Index	-	-	840	2,124,000
AC-630TC-CF	1-1/2" MC	TOP	25#	Cubic Feet	395	989,000	1,070	2,684,000
AL-800TC-CF	1-1/2" MC	TOP	20#	Cubic Feet	515	1,299,000	1,620	4,086,000
AL-1000TC-CF	1-1/2" MC	TOP	25#	Cubic Feet	645	1,627,000	2,140	5,392,000
AL-1400TC-CF	3" FNPT	SIDE	100#	Cubic Feet	900	2,270,000	2,850	7,190,000
AL-2300TC-CF	4" FNPT	SIDE	100#	Cubic Feet	1,475	3,758,000	4,730	11,929,000
AL-5000TC-CF	4 FNPT	SIDE	100#	Cubic Feet	3,225	8,171,000	10,370	26,148,000

Rebuilt meters available upon request

Must have Special Index or factor index reading when operating pressure is greater than 11" WC Adjustment must be made when operating at altitudes greater than 100 feet above sea level.

** Capacity based on 1/2" WC drop. Capacity will double if based on 2" drop across meter.

GAS TURBINE METERS

Compact, high-performance turbine meter for accurate totalizing of gas volume in the flow range of 800 to 10000 cfh and working pressures of up to 275 psig with aluminum housing.

- Magnetic drive - eliminates leaks
- Versatile mounting - can be mounted vertically or horizontally
- Capable of handling pressure surges without internal damage

Contact RMI technical service for application assistance.



4GTS-175

RMI Part No.	Description	Capacity (Millions of BTU/HR)		
			@5 PSIG	@10 PSIG
3GTS-275	3" Flange Mount Meter	2.1-25	2.4-32.5	2.6-42.5
4GTS-175	4" Flange Mount Meter	3-45	3.5-60	2.2-75



Non-stock/special order items are not cancellable or returnable

Shop online at www.raymurray.com or call **800-628-5044**

METER CONNECTION SETS

Used to connect meters to piping. Kit consists of swivel fitting, nut, and gasket. Not required if using a prefab meter bar. Connection sets included for AL-1400 meters and larger. Components also available individually.

RMI Part No.	Description
SWIVELSET-250	1" 20LT Meter Connection Set for AC-250
SWIVELSET-425	1-1/4" 30LT Meter Connection Set for AL-425
SWIVELSET-800	1-1/2" 45LT Meter Connection Set for AC-630, AL-800, AL-1000



GASKET



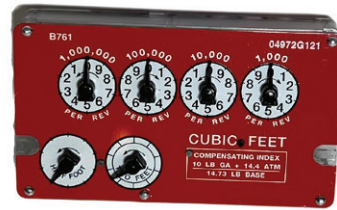
NUT



SWIVEL

COMMON VAPOR METER REPLACEMENT PARTS

RMI Part No.	Description
54885G007	Standard Index for 250/425 Series
INDEX-GASKET	Index Cover Gasket 250/425 Series
INDEX-COVER	Index Cover 250/425 Series
INDEX-10#/425	10# Index for 425/630 Series
INDEX-10#/800	10# Index for 800/1000 series
METER-PLUG	Red Tamper-Proof Security Seal Plug



INDEX-10#/425

Meter Bar Accessories

LOCKING SERVICE VALVES WITH INSULATED UNION

- Tamper resistant
- Fire resistant
- High security
- Maintenance Free

Maximum allowable operating pressure 100 PSI

LV-8050



RMI Part No.	Description
LV-8050-34	3/4" Locking Service Valve
LV-8050-100	1" Locking Service Valve
LV-8050-114	1-1/4" Locking Service Valve
LV-8050-200	2" Locking Service Valve
LD-7115	Lok-Dome for 8050 Valves

JOMAR SAFE BALL VALVE WITH BY-PASS

- Perform periodic meter change-out, in service, without interrupting service
- Use barrel or pad lock-see Service Tools

RMI Part No.	Description
243-004D	3/4" Safe Ball w/By-Pass Valve Insulated Union
243-005D	1" Safe Ball w/By-Pass Valve Insulated Union
243-006D	1-1/4" Safe Ball w/By-Pass Valve Insulated Union



243-004D

REGULATOR/METER BRACKETS

RMI Part No.	H x L Size	U-bolt Size	For Pipe Size	Insulated	For meter
UMB-525-H	5-1/2" x 8"	1-1/4"	3/4" - 1"	Yes	AC-250TC-CF
UMB-525-H114	5-1/2" x 8"	2"	1-1/4" - 1-1/2"	Yes	AC-425TC-CF
UMB-525-N200	5-1/2" x 9"	2-1/2"	2"	No	AC-425TC-CF



UMB-525

* Note: When using bracket with meter bars, use the center hole bolt.



Non-stock/special order items are not cancellable or returnable

Shop online at www.raymurray.com or call 800-628-5044