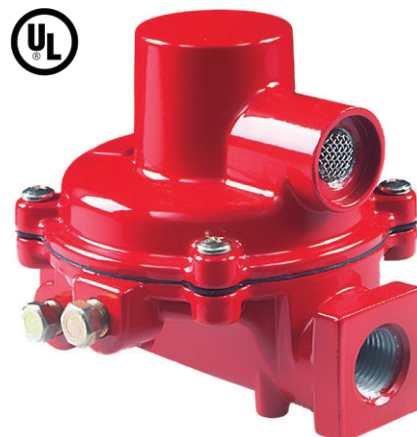


First Stage Regulators

FISHER™

FISHER COMPACT FIRST STAGE REGULATORS

Designed for use as a first-stage regulator for domestic applications, the R122H's size makes it perfect for tight installations. Stainless steel internal parts and corrosion resistant coatings provide a Recommended Replacement Life of 20 years. Its non-adjustable set point makes the unit virtually tamper proof. Inlet and outlet gauge taps allow easy system testing. Large inlet and outlet wrench flats provide for easy installation, even in underground tanks. The design's superior relief performance exceeds UL requirements and provides double failure overpressure protection when used with a Fisher R600 second-stage regulator. The vent is threaded with 3/8 NPT for easy installation of vent piping. The large orifice assists in minimizing freeze problems.



R122H-AAJ

RMI Part#	Inlet Connection	Outlet Connection	Adjustment Range	Pressure Setting	Vent Location	Capacity	Internal Relief
R122H-AAJ	1/4" FNPT	1/2" FNPT	Non-Adjustable	10	Straight	1,100,000 BTU	Yes
R122H-AAJXB	1/4" FNPT	1/2" FNPT	Non-Adjustable	10	90 Degrees	1,100,000 BTU	Yes
R222H-BGK	1/2" FNPT	1/2" FNPT	4-6 PSIG	5	Straight	1,700,000 BTU	Yes
R222H-BGJ	1/2" FNPT	1/2" FNPT	8-12 PSIG	10	Straight	1,800,000 BTU	Yes
R222H-HGK	FPOL	1/2" FNPT	4-6 PSIG	5	Straight	1,700,000 BTU	Yes
R222H-HGJ	FPOL	1/2" FNPT	8-12 PSIG	10	Straight	1,800,000 BTU	Yes
R222H-JGK	FPOL	3/4" FNPT	4-6 PSIG	5	Straight	1,875,000 BTU	Yes
R222H-JGJ	FPOL	3/4" FNPT	8-12 PSIG	10	Straight	1,875,000 BTU	Yes
R222H-DGK	3/4" FNPT	3/4" FNPT	4-6 PSIG	5	Straight	2,000,000 BTU	Yes
R222H-DGJ	3/4" FNPT	3/4" FNPT	8-12 PSIG	10	Straight	2,000,000 BTU	Yes

*Capacities based on 30PSI inlet with 20% droop

FISHER FULL SIZE FIRST STAGE REGULATORS

Time proven design constructed of corrosion-resistant and wear-resistant materials, the R622H is designed to provide a Recommended Replacement Life of 20 years. Built-in 1/8" FNPT gauge taps on both the inlet and outlet pressure sides allow for easy system checks. A large 3/4" FNPT drip-lip vent reduces the chance of blockage by freezing rain or sleet when properly installed with the vent pointing down. Each R622H is equipped for overpressure protection with a corrosion-resistant internal relief valve that provides high capacity relief and a travel stop on the closing cap.



R622H-DGJ

RMI Part#	Inlet Connection	Outlet Connection	Adjustment Range	Pressure Setting	Vent Location	Capacity	Internal Relief
R622H-HGK	FPOL	1/2" FNPT	4-6 PSIG	5	Straight	2,000,000 BTU	Yes
R622H-JGK	FPOL	3/4" FNPT	4-6 PSIG	5	Straight	2,250,000 BTU	Yes
R622H-BGK	1/2" FNPT	1/2" FNPT	4-6 PSIG	5	Straight	2,000,000 BTU	Yes
R622H-HGJ	FPOL	1/2" FNPT	8-12 PSIG	10	Straight	2,100,000 BTU	Yes
R622H-JGJ	FPOL	3/4" FNPT	8-12 PSIG	10	Straight	2,250,000 BTU	Yes
R622H-BGJ	1/2" FNPT	1/2" FNPT	8-12 PSIG	10	Straight	2,100,000 BTU	Yes
R622H-DGJ	3/4" FNPT	3/4" FNPT	8-12 PSIG	10	Straight	2,400,000 BTU	Yes

*Capacities based on 30PSI inlet with 20% droop



Non-stock/special order items are not cancellable or returnable

Shop online at www.raymurray.com or call **800-628-5044**

Second Stage Regulators

FISHER™

FISHER COMPACT SECOND STAGE REGULATOR

The R222 Second-Stage regulator is a UL listed regulator designed to reduce the outlet pressure from a First-Stage regulator, to 11 inches WC in domestic installations. Vents are screened with standard orientation over the inlet. Fisher Second-Stage regulators are painted palm green for easy identification. The Fisher Type R222 is equipped with a stainless steel inlet screen to reduce the amount of debris entering the regulator.

The R222 is designed for small domestic applications up to 650,000 BTU/HR.



R222-BAF

RMI Part#	Inlet Connection	Outlet Connection	Adjustment Range	Pressure Setting	Vent Location	Capacity	Internal Relief
R222-BAF	1/2" FNPT	1/2" FNPT	9.5" - 13" WC	11" WC	Straight	650,000 BTU	Yes

* Capacity based on 10 PSI inlet with 20% droop

** Full capacity relief limits delivery pressure to 2PSI with a 20 PSI inlet pressure

FISHER FULL SIZE SECOND STAGE REGULATORS

The time-proven design, constructed from corrosion-resistant materials, provides a Recommended Replacement Life of 20 years.

- Type R600 Series contains an oversized relief valve and a large 3/4" screened vent to limit downstream pressure to less than 2 PSIG (0.14 bar) even in an overpressure situation as required by NFPA 58. The relief valve design exceeds the industry standard by limiting the downstream pressure to 2 PSIG (0.14 bar) even in double failure situation when used with a Fisher Type R622H or R122H First-Stage regulator.
- For easy system checks, the Type R600 has 1/8" built-in NPT gauge taps, orificed to a No. 54 drill size, on both the upstream and downstream sides.



R622-DFE

RMI Part#	Inlet Connection	Outlet Connection	Adjustment Range	Pressure Setting	Vent Location	Capacity	Internal Relief
R622-BCF	1/2" FNPT	1/2" FNPT	9" - 13" WC	11" WC	Straight	875,000 BTU	Yes
R622-CFF	1/2" FNPT	3/4" FNPT	9" - 13" WC	11" WC	Straight	1,400,000 BTU	Yes
R622-DFE	3/4" FNPT	3/4" FNPT	9" - 13" WC	11" WC	Straight	1,400,000 BTU	Yes
R622-CFFXA	1/2" FNPT	3/4" FNPT	9" - 13" WC	11" WC	Outlet	1,400,000 BTU	Yes
R622-CFFXB	1/2" FNPT	3/4" FNPT	9" - 13" WC	11" WC	90 Degree Side	1,400,000 BTU	Yes
R642-DFE	3/4" FNPT	3/4" 90 Degree Side	9" - 13" WC	11" WC	Straight	920,000 BTU	Yes
R652-CFF	1/2" FNPT	3/4" FNPT Backmount	9" - 13" WC	11" WC	Straight	1,000,000 BTU	Yes
R652-DFE	3/4" FNPT	3/4" FNPT Backmount	9" - 13" WC	11" WC	Straight	1,000,000 BTU	Yes

* Capacity based on 10 PSI inlet with 20% droop

** Full capacity relief limits delivery pressure to 2PSI with a 20 PSI inlet pressure

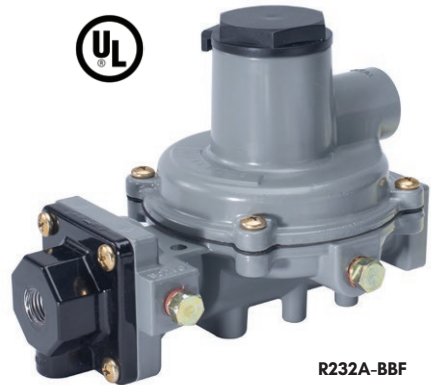
Integral Two Stage Regulators

FISHER™

FISHER COMPACT INTEGRAL TWO STAGE REGULATORS

Compact two-stage regulator provides excellent performance for small domestic installations. Features include:

- Two 1/8" NPT taps for pressure checks
- Inlet screen reduces debris entering the regulator
- High capacity relief valve
- 1/2" outlet provides high BTU capacity for a compact regulator
- 5 year warranty
- 20 year recommended replacement life



R232A-BBF

RMI Part#	Inlet Connection	Outlet Connection	Adjustment Range	Vent Location	Capacity	Internal Relief	Outlet Pressure
R232A-BBF	1/4" FNPT	1/2" FNPT	10.2" - 13" WC	Straight	550,000 BTU	Yes	11" WC
R232A-BBFXA	1/4" FNPT	1/2" FNPT	10.2" - 13" WC	90 Degree	550,000 BTU	Yes	11" WC
R232A-HBF	FPOL	1/2" FNPT	10.2" - 13" WC	Straight	550,000 BTU	Yes	11" WC
R232A-HBFXA	FPOL	1/2" FNPT	10.2" - 13" WC	90 Degree	550,000 BTU	Yes	11" WC

* Capacity based on 30 PSI inlet with 2" WC droop

** Full capacity relief limits delivery pressure to 2 PSI with 20 PSI inlet

FISHER FULL SIZE INTEGRAL TWO STAGE REGULATORS

Integral two-stage units combine a first stage and second stage regulator into one compact unit. Recommended for installations where piping distance is short.

- Reduced freezing problems
- R632A typical uses: on-site cylinder, mobile homes, average domestic service
- High capacity relief valve
- First and second stage 1/8" pressure taps
- 5 year warranty
- 20 year recommended replacement life



R632A-CFF

RMI Part#	Inlet Connection	Outlet Connection	Adjustment Range	Vent Location	Capacity	Internal Relief	Outlet Pressure
R632A-BCF	1/4" FNPT	1/2" FNPT	9" - 13" WC	Straight	850,000 BTU	Yes	11" WC
R632A-BCFXA	1/4" FNPT	1/2" FNPT	9" - 13" WC	90 Degree	850,000 BTU	Yes	11" WC
R632A-CFF	1/4" FNPT	3/4" FNPT	9" - 13" WC	Straight	950,000 BTU	Yes	11" WC
R632A-CFFXA	1/4" FNPT	3/4" FNPT	9" - 13" WC	90 Degree	950,000 BTU	Yes	11" WC
R632A-HCF	FPOL	1/2" FNPT	9" - 13" WC	Straight	850,000 BTU	Yes	11" WC
R632A-HCFXA	FPOL	1/2" FNPT	9" - 13" WC	90 Degree	850,000 BTU	Yes	11" WC
R632A-JFF	FPOL	3/4" FNPT	9" - 13" WC	Straight	850,000 BTU	Yes	11" WC
R632A-JFFXA	FPOL	3/4" FNPT	9" - 13" WC	90 Degree	850,000 BTU	Yes	11" WC

* Capacity based on 30 PSI inlet with 20% droop

** Full capacity relief limits delivery pressure to 2 PSI with 20 PSI inlet



Non-stock/special order items are not cancellable or returnable

Shop online at www.raymurray.com or call **800-628-5044**

2 PSI Regulators

FISHER™

FISHER SECOND STAGE 2 PSI REGULATORS

2 PSI regulators are designed for 2-PSI LPG Regulator Systems and listed by UL. These units are installed downstream from a First-Stage regulator and reduces an inlet pressure of 10 PSIG to a nominal 2 PSIG. 2-PSI service regulators are designed for residential applications that supply 2 PSIG LPG to a line regulator located inside the building.

- Painted Green with a White Cap for easy identification
- Two 1/8" NPT taps for pressure checks
- Inlet screen reduces debris entering the regulator
- High capacity relief valve
- 5 year warranty
- 20 year recommended replacement life



R622E-DCH

RMI Part#	Inlet Connection	Outlet Connection	Adjustment Range	Pressure Setting	Vent Location	Capacity	Internal Relief
R622E-BCH	1/2" FNPT	1/2" FNPT	1 - 2.2 PSI	2	Straight	1,460,000 BTU	Yes
R622E-DCH	3/4" FNPT	3/4" FNPT	1 - 2.2 PSI	2	Straight	1,680,000 BTU	Yes
R652E-DFH	3/4" FNPT Backmount	3/4" Back	1 - 2.2 PSI	2	Straight	1,500,000 BTU	Yes

*Capacities based on 10 PSI inlet with 20% droop

FISHER INTEGRAL 2 PSI REGULATORS

2 PSI regulators are designed for 2-PSI LPG Regulator Systems and listed by UL. These units are installed at the tank and reduce tank pressure to a nominal 2 PSIG. 2-PSI service regulators are designed for residential applications that supply 2 PSIG LPG to a line regulator located inside the building.

- Painted Gray with a White Cap for easy identification
- Two 1/8" NPT taps for pressure checks
- Inlet screen reduces debris entering the regulator
- High capacity relief valve
- 5 year warranty
- 20 year recommended replacement life

TECH NOTE: Line regulators must be installed downstream of the 2 PSI regulators, inside the home or building. Please see pages 34-36 for available line regulators.

COMPACT

RMI Part#	Inlet Connection	Outlet Connection	Adjustment Range	Pressure Setting	Vent Location	Capacity	Internal Relief
R232E-BBH	1/4" FNPT	1/2" FNPT	1 - 2.2 PSI	2	Straight	500,000 BTU	Yes
R232E-HBH	FPOL	1/2" FNPT	1 - 2.2 PSI	2	Straight	500,000 BTU	Yes

*Capacities based on 10 PSI inlet with 20% droop

FULL SIZE

RMI Part#	Inlet Connection	Outlet Connection	Adjustment Range	Pressure Setting	Vent Location	Capacity	Internal Relief
R632E-BCH	1/4" FNPT	1/2" FNPT	1 - 2.2 PSI	2	Straight	850,000 BTU	Yes
R632E-CFH	1/4" FNPT	3/4" FNPT	1 - 2.2 PSI	2	Straight	850,000 BTU	Yes
R632E-HCH	FPOL	1/2" FNPT	1 - 2.2 PSI	2	Straight	900,000 BTU	Yes
R632E-JFH	FPOL	3/4" FNPT	1 - 2.2 PSI	2	Straight	850,000 BTU	Yes



R232E-BBH



R632E-BCH



Non-stock/special order items are not cancellable or returnable

Shop online at www.raymurray.com or call 800-628-5044