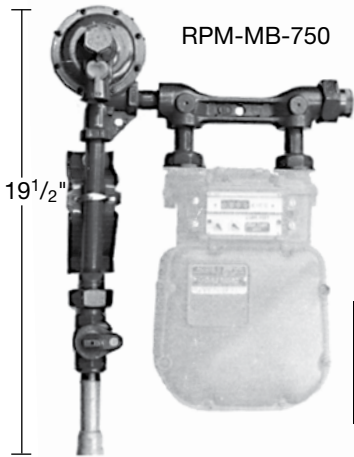


## PREFAB REGULATOR ASSEMBLIES



RPM-MB-750

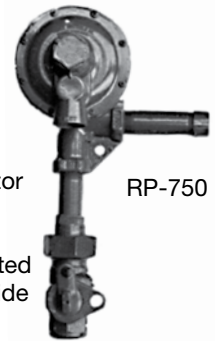
RPM-MB-750

- LV-8050-34 locking service valve with insulated union
- Includes Fisher Regulator w/High Capacity Relief
- 3/4" x 8" Nipples
- MB-730 Meter Bar
- Painted & Pressure Tested
- For AC meter model, top connections

RMI Part No.	Inlet/Outlet Size	For Meter	Regulator Included
RPM-MB-750	3/4"	AC-250TC-CF	R642-DFF
RPM-MB-750A	3/4"	AC-250TC-CF	R652-DFF

Meter & Mounting Bracket NOT Included

RP-750



RP-750

- LV-8050-34 locking service valve with insulated union
- Includes Fisher Regulator w/High Capacity Relief
- 3/4" x 4" Nipples
- Painted & Pressure Tested
- For AM meter model, side connections

RMI Part No.	Inlet/Outlet Size	For Meter	Regulator Included
RP-750	3/4"	AM-250TC-CF	R642-DFF
RP-750A	3/4"	AM-250TC-CF	R652-DFF

## METER BARS



MB-730



MB-701

RMI Part No.	Inlet/Outlet	Meter Connection	For Meter
MB-701*	1 / 3/4"	1"	AC-250TC-CF
MB-730	3/4"	1"	AC-250TC-CF
MB-740	1 1/4"	1 1/4"	AL-425TC-CF

\*The MB-701 is a meter bar with an integral locking service valve & insulated union outlet.

## LOCKING SERVICE VALVES WITH INSULATED UNION



LV-8050

NOTE: Maximum allowable operating pressure 100 lbs.

- Tamper resistant
- Fire resistant
- High security
- Maintenance free



Lok-Dome

RMI Part No.	Description
LV-8050-34	3/4" Locking Service Valve
LV-8050-100	1" Locking Service Valve
LD-7115	Lok-Dome for 3/4" & 1" Valve

## MULTIPLE METER BAR ASSEMBLY

Save Installation Time & Get a Professional Look



MB-701-3

Meters NOT Included

RMI Part No.	Meter Bar	Manifold Pipe Size	Length	For Meter
MB-701-2*	Double	1 1/4"	32"	AC-250TC-CF
MB-701-3*	Triple	1 1/4"	48"	AC-250TC-CF

\*Note: Mount on bracket UMB-525H using center bolt hole.

## JOMAR SAFE BALL WITH BY-PASS

- Perform periodic meter change-out, in service, without interrupting service
- Use barrel or pad lock-see Service Tools

RMI Part No.	Description
243-004B	3/4" Safe Ball w/By-Pass Valve Insulated Union

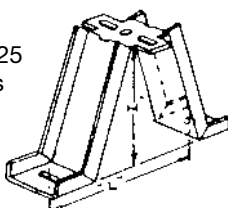


## VAPOR METER REPLACEMENT PARTS

RMI Part No.	Description
SWIVELSET-250	Nut, nipple, gasket for AC250
SWIVELSET-425	Nut, nipple, gasket for AL425
SWIVELSET-800	Nut, nipple, gasket for AL800
INDEX-250/425	Index for 250/425 series
INDEX-10#/425	10# Index for AL-425TCH
INDEX-10#/800	10# Index for 800/1000 series
INDEX-BOX	Index box for 250/425 series

## REGULATOR/METER BRACKETS

UMB-525 Series



Insulated Bolt

RMI Part No.	I x L Size	U-Bolt Size	For Pipe Size	Insulated	For Meter
UMB-525-H	5 1/2" x 8"	1 1/4"	3/4" - 1"	Yes	AC-250TC-CF
UMB-525-H114	5 1/2" x 8"	2"	1 1/4" - 1 1/2"	Yes	AC-425TC-CF
UMB-525-N200	5 1/2" x 9"	2 1/2"	2"	No	AC-425TC-CF

\*Note: When using bracket with meter bars, use center hole bolt.

## DOMESTIC AND COMMERCIAL METERS

American Meter has a full line of vapor meters. Domestic and commercial meters are compact, lightweight, rugged die-cast aluminum alloy construction. Meters are temperature compensated for accurate measurement.



AM-250TC-CF



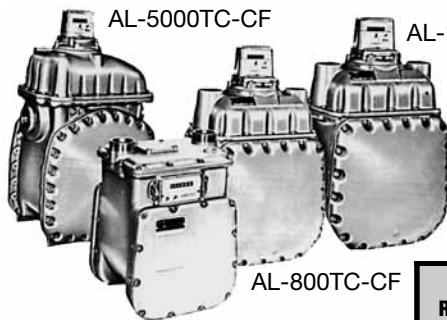
AC-250TC-CF

### DOMESTIC AND COMMERCIAL METERS

RMI Part No.	Meter Connection		Meter Working Pressure	Index** Available	SCFH*		BTU/Hr*	
	Connection	Position			Propane	Propane		
AM-250TC-CF	3/4" FNPT	Side	5#	Cubic Feet	160	404,000		
AC-250TC-CF	1" MC	Top	5#	Cubic Feet	160	404,000		
AL-425TCL-CF	1 1/4" MC	Top	10#	Cubic Feet	270	694,000		

\* @60°F, 11" W.C. Inlet

\*\* Must have Special Index or factor index reading when operating pressure is greater than 11" W.C. Adjustment must be made when operating at altitudes greater than 1000 feet above sea level. Cubic foot indexes only per National Board of Weights & Measures.



AL-5000TC-CF

AL-1000TC-CF

AL-800TC-CF

AL-425TCH-CF



AC-630TC-CF

## COMMERCIAL & INDUSTRIAL METERS

Large commercial and industrial vapor meter has rugged construction, lightweight and ample capacity for all sizes of propane installations.

RMI Part No.	Meter Connection		Meter Working Pressure	Index# Available	@ 60°F, 11" W.C. **		@ 60°F, 10# PSIG	
	Connection	Position			CFH	BTU	CFH	BTU
AL-425TCH-CF	1 1/4" MC	Top	24#	Cubic Feet	270	694,000	840	2,124,000
AL-425TCH-CFH	1 1/4" MC	Top	24#	10# Index	--	--	840	2,124,000
AC-630TC-CF	1 1/2" MC	Top	25#	Cubic Feet	395	989,000	1,070	2,684,000
AL-800TC-CF	1 1/2" MC	Top	25#	Cubic Feet	515	1,299,000	1,620	4,086,000
AL-1000TC-CF	1 1/2" MC	Top	25#	Cubic Feet	645	1,627,000	2,140	5,392,000
AL-1400TC-CF	3" FNPT	Side	100#	Cubic Feet	900	2,270,000	2,850	7,190,000
AL-2300TC-CF	4" FNPT	Side	100#	Cubic Feet	1,475	3,758,000	4,730	11,929,000
AL-5000TC-CF	4" FNPT	Side	100#	Cubic Feet	3,225	8,171,000	10,370	26,148,000

Rebuilt meters available upon your request

# Must have Special Index or factor index reading when operating pressure is greater than 11" W.C.

Adjustment must be made when operating at altitudes greater than 1000 feet above sea level.

\*\* Capacity based on 1/2" W.C. drop. Capacity will double if based on 2" drop across meter.

## AMERICAN METER ROTARY METER

Features heavy duty housing, vertical or horizontal mounting, mechanical counter, battery temperature compensation with six month data storage and high accuracy at low flows.



RMI Part No. with Temperature Compensation <sup>3</sup>	Pipe Size Inlet/Outlet	Capacity Range % Accuracy <sup>2</sup> at Various Operating Pressures Thousands of BTU/HR		
		11" WC	5 PSI	10 PSI
RPM-9.0 CTC	1 1/2" FNPT <sup>1</sup>	75-2,500	99-2,960	124-3,722
RPM-1.5 TC	1 1/2" FNPT <sup>1</sup>	94-3,750	123-4,930	155-6,205
RPM-3.5 TC	2" FNPT <sup>1</sup>	116-8,750	153-11,500	193-14,500
RPM-5.5 TC	2" FNPT <sup>1</sup>	114-13,750	150-18,000	189-22,700

1 - 2" Flange is also available.

2 - Meters will record lower flow rates but at a lower degree of accuracy.

3 - Also available without temperature compensation.

## GAS TURBINE METERS

Compact, high-performance turbine meter for accurate totalizing of gas volumes in the flow range of 800 to 10,000 cfh and working pressures of up to 275 psig with aluminum housing.

- Magnetic drive—eliminates leaks
- Versatile mounting—can be mounted vertically or horizontally
- Capable of handling pressure surges without internal damage



3GTS-275

Contact RMI technical service for application assistance.

RMI Part No.	Description	Capacity (Millions of BTU/HR*)		
		@11" WC	@5 PSIG	@10 PSIG
3GTS-275	3" Flange Mount Meter	2.1-25	2.4-32.5	2.6-42.5
4GTS-175	4" Flanged Meter	3-45	3.5-60	2.2-75